

GOVERNMENT CORNER RESTORATION FORM

Date: 2/12/98 By: JC
This survey consists of:

Township 25S Range 6W Sec. 19

County DOUGLAS

State OR

Date 2-9-98

No. _____

Map: _____
Narrative: _____
Corner Rpt: 64/79-25

Corner Designation

$\frac{1}{4}$ ^R S 24 | S 19 ^R
W W

- DOUGLAS COUNTY SURVEYOR ONLY
- Condition
- Not Found
- Renewed
- Unrecorded
- Surveyed In
- Referenced Out

Previous Renewals 1963 DCSO, 1968 BLM

Monument(s) Found: (Condition and Source)

1963 DCSO BCLIP NOT FOUND

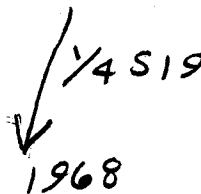
13" NOW 15" DIA. W/OAK WITH FULLY HEALED LOW BLAZES ON EAST AND WEST TRUNKS. (1968 BLM)

3/4" DIA. BRASS CAP ON A 2 1/2" O.D. IRON PIPE PROTRUSING 6" ABOVE GROUND (1968 BLM)

(NOTE CORNER LIES S 31° W 2.0 FT ON NORTH EDGE OF TREE, CENTER OF TREE IS 2.5 FT FROM BCLIP)

U. S. DEPT. OF THE INTERIOR

R M



BUR. OF LAND MANAGEMENT

Accessories Found:

(BKG'S + DIST TAKEN FROM A POINT ON THE NORTH SIDE OF CORNER TREE)
12" NOW 19" DIA. W/OAK WITH PREVIOUSLY OPENED UNHEALED ROTTED BLAZES, NO SCRIBING VISIBLE BEARS N 68° E, 27.7 FT (REC N 68° E, 27.1 FT DISTANCE FITS WELL WITH BLAZE), OBT

16" NOW 14" DIA. DEAD 20 FT HIGH B. OAK SNAG WITH FULLY HEALED DOUBLE BLAZE BEARS N 43° E, 29.0 FT (REC. N 41° E, 28.0 FT) 1963

10" NOW 13" DIA. W/OAK WITH A FULLY HEALED DOUBLE BLAZE, BEARS N 32° W, 12.5 FT (AGREES WITH REC.) 1963

RENEWAL

Monument Set (Procedure and Description)

Monument Detail

NONE

N/A

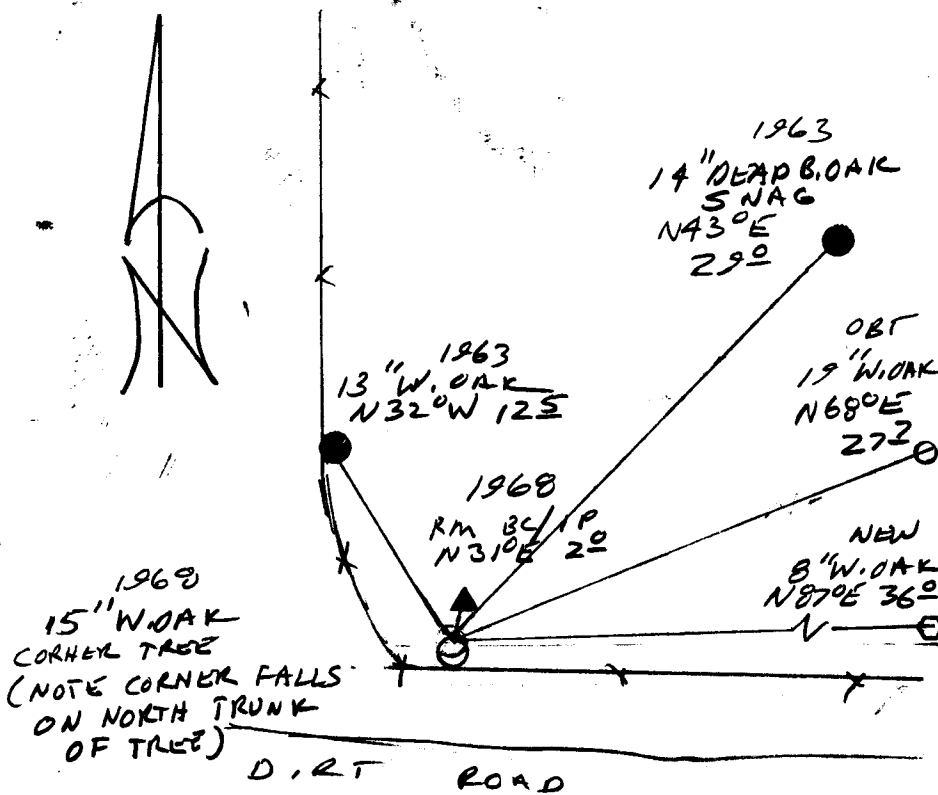
New Accessories

8" DIA. W. OAK DOUBLE PLAZED AND SCRIBED "1/4 S19CS BT"
BEARS N 87° E 36.0 FT

Sketch of Monument, Accessories, and General Area

Location & Comments

FENCE RUNS NORTH
AND EAST FROM CORNER



Comp. Declin. 17 3/4° E
Agency DCSO
Party Chief RANDALL W. SMITH
Notekeeper
Witnesses STEPHEN J. KLAUSE

Address

Surveyor's Seal

REGISTERED
PROFESSIONAL
LAND SURVEYOR

Randall W. Smith
EXPIRE 6-30-98

OREGON
JULY 25, 1990
RANDALL W. SMITH
2469