

GOVERNMENT CORNER RESTORATION FORM

Date: 2/12/98 By: JC

Township 255 Range 6W Sec. 15

County DOUGLAS This survey consists of:

State OK Date 2-5-98 No. _____

Map: _____

Narrative: _____

Corner Designation

Corner Rpt: LA/79-21

NE
COR
DLC
51

- DOUGLAS COUNTY
- Condition Report Only
- Not Found
- Renewed
- Unrecorded
- Surveyed In
- Referenced Out

Previous Renewals 1962 DC50

MONUMENT DETAIL

Monument(s) Found: (Condition and Source)

CORNER LIES IN CAT ROAD
1962 BC/IC NOT FOUND

N/A

Accessories Found:

18" B. OAK NOW ROOT HOLE FOUND NEAR RECORD
N 40° E, 89.8 FT " ORT

18" NOW MULTI TRUNKED W. OAK WITH A FULLY HEALED
DOUBLE BLAZE ON EASTERLY 20" DIA. TRUNK, ROOT
CROWN OF SCRIBED TRUNK, BEARS S 75° E, 23.0 FT
(AGREES WITH REC.) 1962

11" NOW MULTI TRUNKED W. OAK WITH A FULLY HEALED
DOUBLE BLAZE ON WESTERLY 13" DIA. TRUNK,
CENTER OF SCRIBED TRUNK, ROOT CROWN OF SCRIBED
TRUNK BEARS N 33° E, 29.3 FT (AGREES WITH REC.)
1962

RENEWAL

Monument Detail

Monument Set (Procedure and Description)

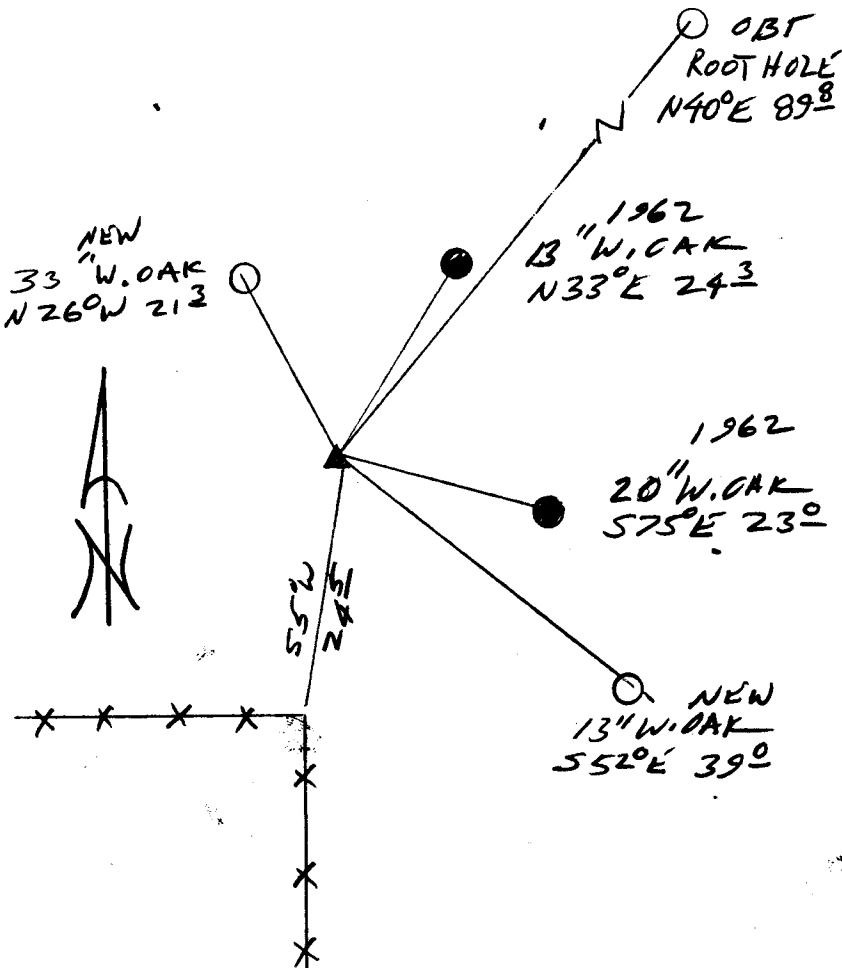
2 7/8" DIA. BRASS CAP ON A
 1 3/8" DIA. BY 32" LONG
 RUN PIPE IS SET AT A
 POSITION DETERMINED FROM
 BT'S, PROTRUSING 6" ABOVE
 GROUND. NOTE CAT ROAD
 NOW ABANDONED

DOUGLAS COUNTY SURVEYORS
 T 25 S
 NE COR
 R
 DLC 6
 51 W
 1998
 OFFICE

New Accessories

13" DIA. W. OAK DOUBLE BLAZED AND SCRIBED "NE DLC
 51 CS BT" BEARS S52°E, 39.0 FT
 33" DIA. W. OAK DOUBLE BLAZED AND SCRIBED "NE DLC
 51 CS BT" BEARS N26°W, 21.3 FT

Sketch of Monument, Accessories, and General Area



Location & Comments

FENCE COR, FENCE'S
 RUNNING WEST &
 SOUTH 16' BLAIS S55°W
 24.5 FT

Comp. Declin. 17 3/4° E
 Agency OCSO
 Party Chief RANDALL W. SMITH
 Notekeeper [Signature]
 Witnesses STEVEN J. FLYNN

Address

Surveyor's Seal

REGISTERED
 PROFESSIONAL
 LAND SURVEYOR
 [Signature]
 EXPIRES 6-30-99
 OREGON
 JULY 26, 1990
 RANDALL W. SMITH
 2400