

GOVERNMENT CORNER RESTORATION FORM

Date: 2/12/98 By: JC

This survey consists of:

Township 255 Range 6W Sec. 9

County DOUGLAS

Map: \_\_\_\_\_

State OR Date 2-3-98

No. \_\_\_\_\_

Narrative: \_\_\_\_\_

Corner Rpt: 64/79-19

Corner Designation

DOUGLAS COUNTY SURVEYOR

Condition Report Only

Not Found

Renewed

Unrecorded

Surveyed In

Referenced Out

MONUMENT DETAIL

NE COR  
DLC52

Previous Renewals 1962 DCS

Monument(s) Found: (Condition and Source)

2 1/2" BRASS CAP LOOSE ON A  
1 1/2" O.D. IRON PIPE BADLY  
BENT OVER APPROX 1 FT  
NORTHERLY OF PLUMB (1962)

COUNTY SURVEYORS OFFICE

T25S

R6W

DLC | N  
52 | E

1962

Accessories Found:

PLUMB POSITION OF 1 3/4" IP  
15" W. OAK NOW ROOT HOLE BEARS N50°W  
14.5 FT (AGREES WITH REC.) OBS

10" NOW 14" DIA W. OAK WITH A FULLY HEALED  
DOUBLE BAZZ, BEARS S88°E, 17.7 FT  
(AGREES WITH REC.) 1962

14" NOW 22" DIA. D. FIR WITH A FULLY HEALED  
DOUBLE BAZZ, BEARS S88°E, 28.3 FT  
(AGREES WITH REC.) 1962

SAND STONE TOP MEASURES 4" X 5" IS  
FOUND N20°E 1.5 FT (AGREES WITH REC.) 1962

RENEWAL

Monument Set (Procedure and Description)

Monument Detail

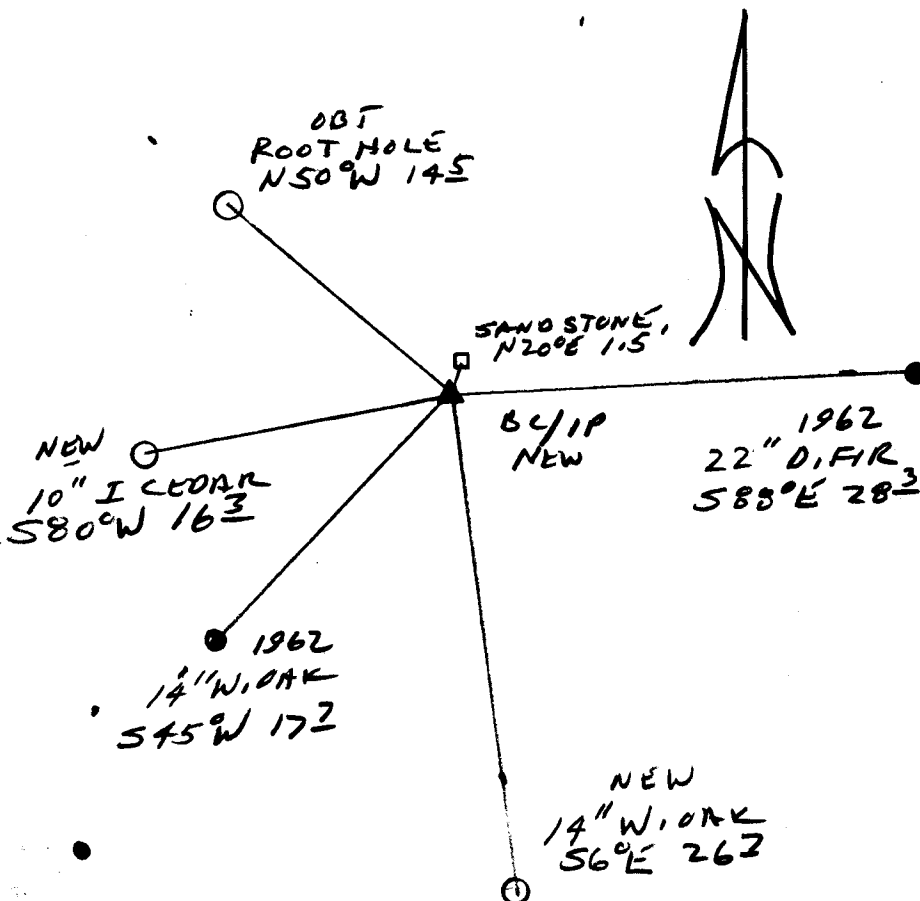
2 3/8" DIA BRASS CAP ON A 1 3/8" O.D. BY 32" LONG IRON PIPE IS SET AT PLUMB POSITION OF FOUND 1962 BC/IP, PROTRUDING 4" ABOVE GROUND, 1962 IRON PIPE MEASURED 36" LONG.

COUNTY SURVEYORS OFFICE  
T255  
R6W  
NE  
DLC 52  
1998

New Accessories

10" DIA. I CEDAR DOUBLE BLAZED AND SCRIBED "NE DLC 52 CS B7" BEARS S 80° W, 16.3 FT  
14" DIA. W. OAK DOUBLE BLAZED AND SCRIBED "NE DLC 52 CS B7" BEARS S 6° E 26.7 FT

Sketch of Monument, Accessories, and General Area



Location & Comments

Comp. Declin. 177°40'E  
Agency NCSO  
Party Chief RANDALL W. SMITH  
Notekeeper  
Witnesses STEVEN J. FLAVER  
DUKE RODGERS  
(CPRG PARTY OWNER)

Address

Surveyor's Seal  
REGISTERED PROFESSIONAL LAND SURVEYOR  
RANDALL W. SMITH  
EXPIRES 6-30-98  
OREGON JULY 25, 1990  
RANDALL W. SMITH  
2480