

GOVERNMENT CORNER RESTORATION FORM

Date: 2-3-98 By: JC

This survey consists of:

Township 24S Range 6W Sec. 33 County DOUGLAS

Map: \_\_\_\_\_

State OR Date 2-2-98 No. \_\_\_\_\_

Narrative: \_\_\_\_\_

Corner Rpt: 64/79-13

Corner Designation

T 24S  
S 33 R  
1/4 S 4 W  
T 25S

DOUGLAS COUNTY  
SURVEYOR

Condition Report Only

Not Found

Renewed

Unrecorded

Surveyed In

Referenced Out

MONUMENT DETAIL

Previous Renewals 1922 PROPORTIONED, 1962 DCSO N.F.

Monument(s) Found: (Condition and Source)

1. I.P. FROM 1922 NOT FOUND

N/A

Accessories Found:

ORIG. COR POSITION. (1853)

14" NOW 22" DIA TIPPED OUT OF GROUND D.FIR STUMP  
WE OPEN AND FIND SCRIBING "4S" BEARS S 65° W, 13.9 FT  
FROM ROOT HOLE. (NOTE SCRIBING FOUND  
7" FROM CENTER OF TREE.) OBT

ORIG. NW BT NOT FOUND

FROM 1922 PROPORTIONED CORNER (CORRUPTED)  
FROM 1922 BT'S)

30" NOW 30" DIA. 6 FT HIGH D.FIR STUMP  
SHOWS EVIDENCE OF BEING PREVIOUSLY OPENED  
NO SCRIBING FOUND, OLD RED PAINT ON STUMP  
AND A BARELY RUSTED UNRECOGNIZABLE METAL TAG.  
RECORD "S 26° E, 12.4 FT."

48" NOW 48" DIA. 2 FT HIGH D.FIR STUMP  
SHOWS EVIDENCE OF BEING PREVIOUSLY OPENED  
NO SCRIBING VISIBLE RECORD "N 17° E, 50.0 FT."

T24-4 340100 / T25-6 340700 ✓ c

C.S. File No. 64/79-13

RENEWAL

Monument Set (Procedure and Description)

2 7/8" DIA BLACK CAP ON A 1 3/8" O.D. BY 32" LONG IRON PICK IS SET AT A POSITION DETERMINED FROM FOUND O.M.G. BT. PROTRUDES 6" ABOVE GROUND (NOTE E-W OLD BURIED FENCE LINE FOUND WHILE DIGGING OUT HOLE. CALCULATED 1922 PROPORTIONED CORNER BEARS APPROX; N88°W, 13.5 FT FROM SET BC/IP

Monument Detail

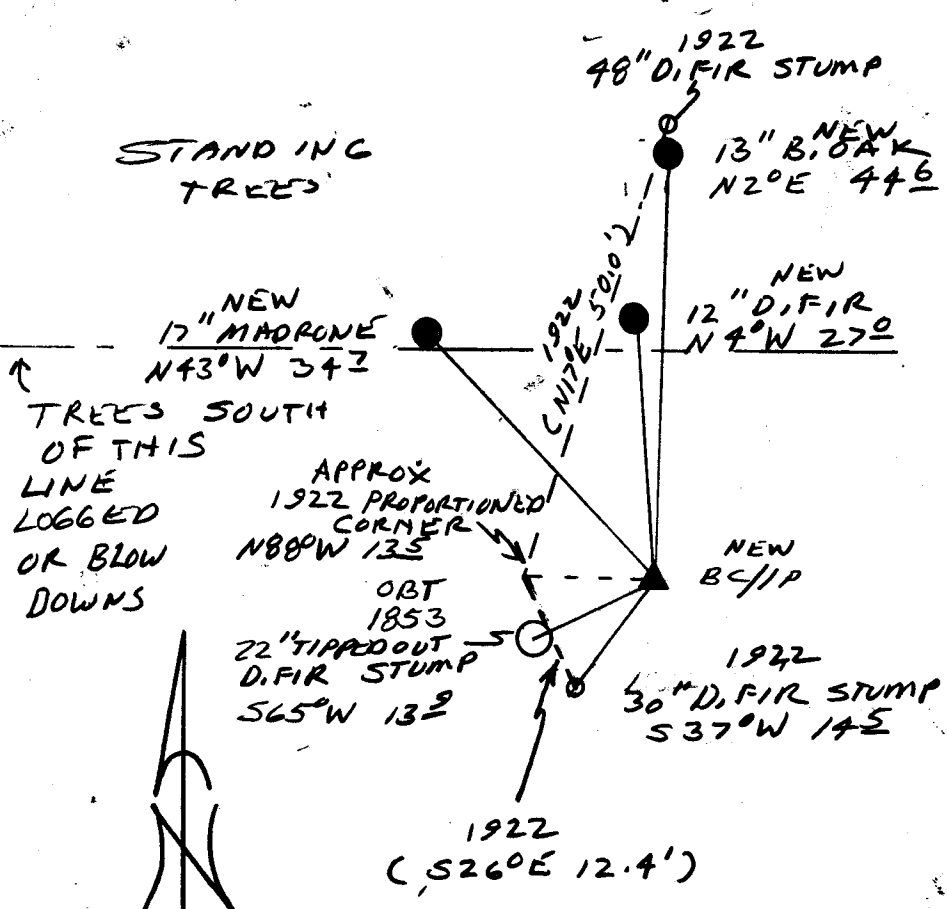
DOUGLAS COUNTY SURVEYOR  
T 245  
1/4 533 R  
54 6 W  
T 255  
OFFICE

17" DIA MADRONE DOUBLY BLAZED AND SCRIBED "1/4 533 CS BT" BEARS N43°W, 34.7 FT

New Accessories

- 12" DIA D. FIR, DOUBLE BLAZED AND SCRIBED "1/4 533 CS BT" BEARS N40°W, 27.0 FT
- 1922 SE BT NOW STUMP BEARS S37°W, 14.5 FT ADD BARK SCRIBING "X BT" NO. 2 LIVE TREES SOUTH
- 13" DIA. B. OAK DOUBLE BLAZED AND SCRIBED "1/4 533 CS BT" BEARS N2°E, 44.6 FT

Sketch of Monument, Accessories, and General Area



Location & Comments

Blank lines for location and comments.

Comp. Declin. 17 3/4° E  
Agency DCSO  
Party Chief RANDALL W. SMITH  
Notekeeper Randall W. Smith  
Witnesses STEPHEN J. FLAUS

Address

Surveyor's Seal

REGISTERED PROFESSIONAL LAND SURVEYOR  
Randall W. Smith  
EXPIRES 6-30-98  
OREGON  
JULY 25, 1990  
RANDALL W. SMITH  
2400