

GOVERNMENT CORNER RESTORATION FORM

Date: 1-12-98 By: X

This survey consists of: _____

Township 25S Range 5W Sec. 17

County DOUGLAS Map: _____

State OREGON Date OCT. 22, 1997

No. _____

Narrative: _____

Corner Rpt: 64/78-45

Corner Designation

1/4

S18 | S17

DOUGLAS COUNTY

Condition: RENEWED Only

Not Found

Renewed

Unrecorded

Surveyed In

Referenced Out

MONUMENT DETAIL

Previous Renewals 1931 AND 1960

Monument(s) Found: (Condition and Source)

FROM THE 1960 BYRON RENEWAL
A 2 1/2 INCH DIAMETER BRASS CAP,
MARKED AS AT RIGHT, ON A 1 1/2 INCH O.D.
IRON PIPE FIRMLY SET AND PROTRUDING
10 INCHES ABOVE GROUND.

THE 3/4" X 36" IRON PIPE FROM THE
1931 RENEWAL AND RECORDED AS A 1/2"
IRON PIPE, NORTH FROM THE B.C. MON-
UMENT, IN THE 1960 RENEWAL, IS NOT
FOUND.

COUNTY SURVEYORS OFFICE

T25S R5W

S18 | S17

1960

Accessories Found:

NO EVIDENCE OF ORIGINAL BEARING TREES IS FOUND.

EVIDENCE OF TWO 1931 RENEWAL BEARING TREES
IS FOUND. A 10" FIR NOW 3 1/2 INCH DIAMETER 2 FOOT TALL
FIR STUMP WITH POSSIBLE BLAZE EVIDENCE FOUND INSIDE, BEARS
N63°W, 63.2 FEET DISTANT (RECORD N61°30'W, 63.7 FT.).
A 15" PINE NOW A SHATTERED STUMP PARTIALLY BURIED UNDER
ROCKS BY EXCAVATION WORK BEARS S58°E, 56.0 FEET DISTANT
(AS PER RECORD).

FROM THE 1960 RENEWAL A 9" B. OAK NOW A 17 INCH
D.B.H. BLACK OAK WITH A FULLY HEALED DOUBLE BLAZE BEARS
N46 1/2°E, 29.0 FEET DISTANT (RECORD N49 1/2°E, 29.0 FT.).

Monument Set (Procedure and Description)

Monument Detail

N/A

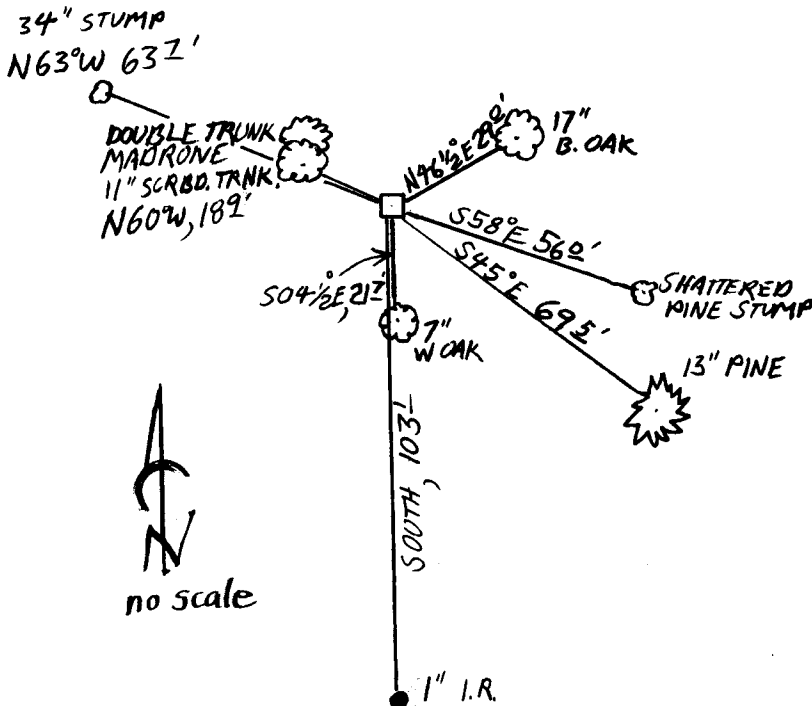
New Accessories

A 13 INCH D.B.H. PINE DOUBLE BLAZED AND SCRIBED 1/4 S17 CS BT, BEARS S45°E, 69.5 FEET DISTANT.

A 7 INCH D.B.H. WHITE OAK DOUBLE BLAZED AND SCRIBED 1/4 S17 CS BT, BEARS S04 1/2°E 21 1/2 FEET DISTANT.

A DOUBLE TRUNK MADRONE DOUBLE BLAZED AND SCRIBED 1/4 S18 CS BT ON THE 11 INCH D.B.H. TRUNK WHICH IS THE SOUTHERLY AND LARGER TRUNK. THE CENTER OF THE ROOT CROWN BEARS N60°W, 18 1/2 FEET FROM 1968 BARNES SURVEY (DCSD MAP M.36-55) A 1" DIAMETER IRON ROD FIRMLY SET AND PROTRUDING 6 INCHES FROM GROUND (RECORD 5/8" I.P.) BEARS SOUTH, 103 1/4 FEET DISTANT (AS PER RECORD)

Sketch of Monument, Accessories, and General Area



Location & Comments

MONUMENT LIES AT BOUNDARY OF SECOND GROWTH FOREST LAND TO EAST AND SUBDIVIDED HOUSING LAND TO THE WEST.

Comp. Declin. 17 3/4°E
Agency KCSO
Party Chief STEPHEN JOHN FLAUCÉ
Notekeeper Stephen John Flaucé
Witnesses JOHN PIKE

Address

Surveyor's Seal

REGISTERED
PROFESSIONAL
LAND SURVEYOR

RANDALL W. SMITH
EXPIRES 6-30-99

OREGON
JULY 24, 1980
RANDALL W. SMITH
2499