

GOVERNMENT CORNER RESTORATION FORM

Date: 12-5-97 By: PC

Township 25S Range 6W Sec. 1

County DOUGLAS This survey consists of:

State OR Date 12-1-97

No. _____ Narrative: _____

Corner Designation

Corner Rpt: CS 64/78-31

$\frac{1}{4} \frac{S 1}{S 12}$

DOUGLAS COUNTY

Condition SURVEYED Only

Not Found

Renewed

Unrecorded

Surveyed In

Referenced Out

MONUMENT DETAIL

Previous Renewals NONE

Monument(s) Found: (Condition and Source)

NONE

N/A

Accessories Found:

20" DIA W. OAK NOW ROTTED AND FALLEN OAK STUMP SHOWING SIGN OF PREVIOUSLY BEING OPENED. ABOVE PREVIOUS SEARCH A SMALL AREA OF BLAZE WITH REVERSE SCRIBING VISIBLE, POSSIBLY "A". RECORD S 58 3/4° E, 158.4 FT. OBT NOTE: GOOD ROOT HOLE APPARENT RESIDUE FALLEN OAK STUMP. ORIG. NE BT NOT FOUND.

RENEWAL

Monument Set (Procedure and Description)

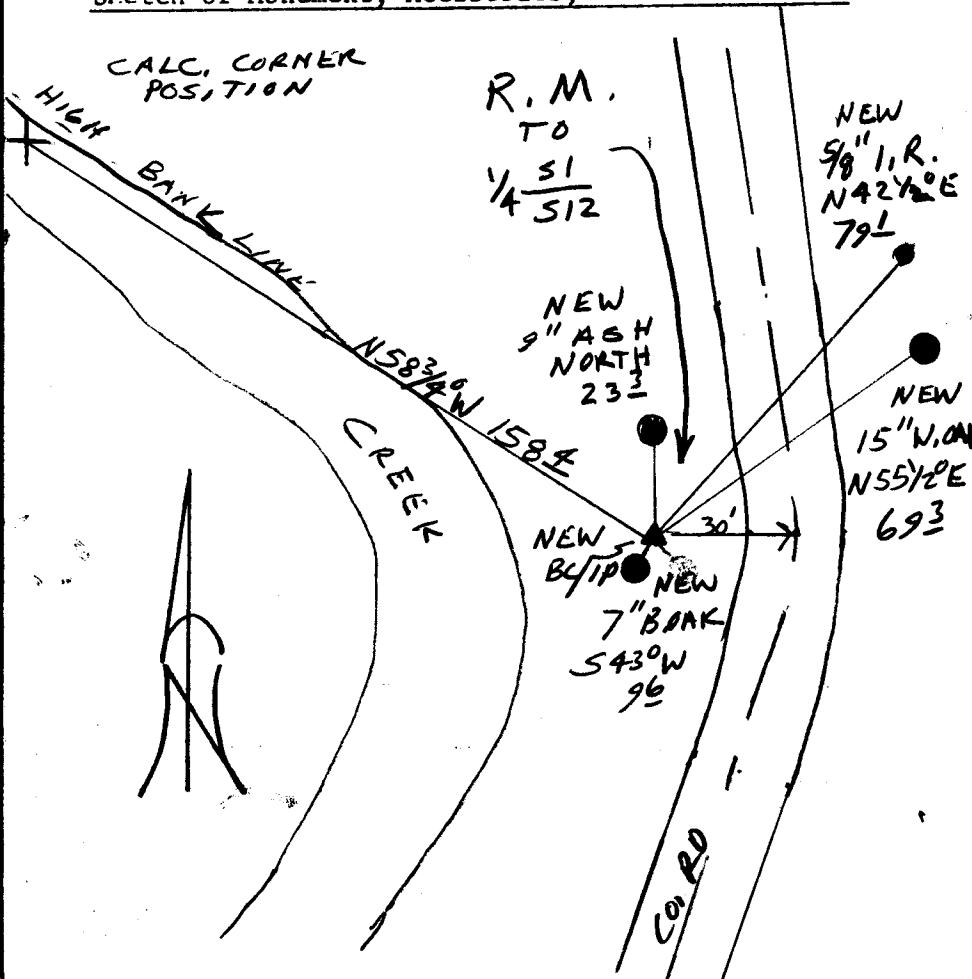
AT THE LOCATION OF ORIGINAL BT
 STUMP HOLE AS DESCRIBED ON FRONT.
 A 2 3/8" DIA. BRASS CAP ON 1 3/8" O.D.
 BY 32" LONG IRON PIPE IS SET.
 PROTRUDES 6" ABOVE GROUND.

Monument Detail

DOUGLAS COUNTY SURVEYOR
 T25/S
 R.M.
 1/4 51
 512 W
 TRUE COR.
 N58 3/4° W 158.4'
 1997
 OFFICE

New Accessories

- 7" DIA. B. OAK DOUBLE BLAZED AND SCRIBED "1/4 512 RM CS BT"
 BEARS S43°W, 9.6 FT
 - DOUBLE TRUNKED ASH DOUBLE BLAZED AND SCRIBED "1/4 512 RM CS BT"
 ON 9" SOUTHERLY TRUNK ROOTCROWN BEARS NORTH, 23.3 FT
 - 5/8" IRON ROD PROTRUDES 12" ABOVE GROUND ALONG EASTERLY R/W
 OF CO. RD. BEARS N42 1/2° E, 79.1 FT
 - 15" DIA. W. OAK DOUBLE BLAZED AND SCRIBED "1/4 512 RM CS BT"
 BEARS N55 1/2° E, 69.3 FT
- Sketch of Monument, Accessories, and General Area



Location & Comments

CORNER FALL WITHIN
 BANKS OF CREEK ON
 NORTHEAST SIDE. ARBIT
 SHOWS EVIDENCE OF
 CREEK MOVEMENT ORIG.
 LINE NOTES CALL FOR A
 CREEK WESTLY 166 FT THIS
 FITS WELL WITH A SE'LY RUNNING
 DEPRESSION IN FIELD.

Comp. Declin. 17 3/4° E
 Agency DCSO
 Party Chief RANDALL W. SMITH
 Notekeeper
 Witnesses STEPHEN T. FLAKE

Address

Surveyor's Seal

REGISTERED
 PROFESSIONAL
 LAND SURVEYOR

Randall W. Smith
 EXPIRES 6-30-98

OREGON
 JULY 25, 1990
 RANDALL W. SMITH
 2489