

RENEWAL

Monument Detail

Monument Set (Procedure and Description)

2 3/8" DIA. BRASS CAP ON A 1 7/8" O.D.
 BY 32" LONG IRON PIPE IS
 SET AT PLUMB POSITION OF
 FD BENT I.R. PROTRUDES 10"
 ABOVE GROUND. FOUND I.R.
 SET ALONG NORTH EDGE OF
 RC/IP PROTRUDES 16" ABOVE
 GROUND.

DOUGLAS COUNTY SURVEYORS
 T 255
 SEC COR R
 DLC 6
 61 W

1997
 OFFICE

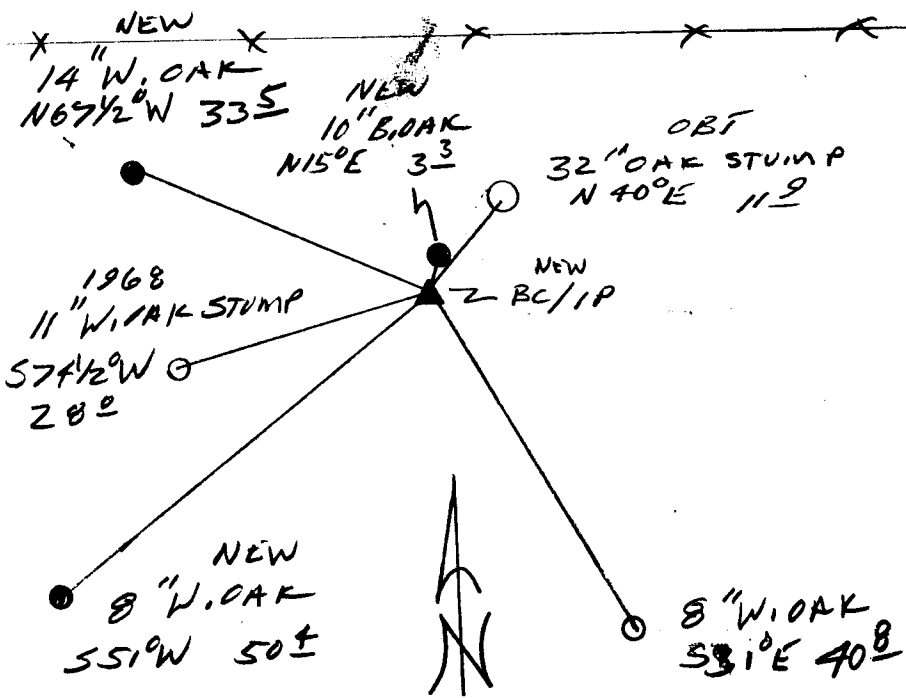
New Accessories

10" DIA. B. OAK DOUBLE BLAZED AND SCRIBED "SE DLC
 61 CS BT", BEARS N 15° E, 3.3 FT

14" DIA. W. OAK DOUBLE BLAZED AND SCRIBED "SE DLC
 61 CS BT", BEARS N 67 1/2° W, 33.5 FT

8" DIA. W. OAK DOUBLE BLAZED AND SCRIBED "SE DLC 61 CS BT"
 BEARS S 51° W 50.4 FT

Sketch of Monument, Accessories, and General Area



Location & Comments

Comp. Declin. 17 3/4° E
 Agency DCC
 Party Chief RANDALL W. SMITH
 Notekeeper
 Witnesses STEPHEN J. FLAUS

Address

Surveyor's Seal

REGISTERED
 PROFESSIONAL
 LAND SURVEYOR

Randall W. Smith
 2489 6-30-98

OREGON
 JULY 25, 1960
 RANDALL W. SMITH
 2489