

GOVERNMENT CORNER RESTORATION FORM

Date: 12-5-97

TR

Township 25S Range 6W Sec. 1 County DOUGLAS

M

N

State OR Date 11-20-97 No. _____

Corner CS 64/78-29

Corner Designation PERPETUATED CORNER AS DETERMINED 1892 RENEWAL (VOL 1 PG 203, 204)

DOUGLAS COUNTY SURVEYOR

Condition Report Only

Not Found

Renewed

Unrecorded

Surveyed In

Referenced Out

MONUMENT DETAIL

Previous Renewals 1892 + 1961 DCSC

Monument(s) Found: (Condition and Source)

2 1/2" DIA. BRASS CAPON A 1 1/2" OLD IRON PIPE PROTRUDING 5" ABOVE GROUND. A LOOSE MOUND OF SOIL IS AROUND BASE OF 13" IP ONESTONE HAS AN ETCHED LINE.

COUNTY SURVEYORS OFFICE
T25S R6W

N.E. | N.W.
D.L.C. | D.L.C.
47 | 46
1961

Accessories Found:

8" NOW DOUBLE TRUNKED W. OAK WITH A FULLY HEALED SINGLE BLAZE ON EASTERN 13" TRUNK CENTER OF BLAZED TRUNK BEARS N 77° E, 211.0 FT (REC. N 80° E, 211.0 FT) 1961

12" NOW 24" DIA W. OAK WITH A FULLY HEALED SINGLE BLAZE, BEARS N 6° W, 153.3 FT (AGREES WITH REC.) 1961

30" DIA. 3 FT HIGH ROTTED OAK NO BLAZES OR SCRIBING VISIBLE, BEARS N 17° W, 197.3 FT (AGREES WITH REN. RECORDS) OBT. SEE VOL 1 PG 203

2 ROOT HOLE BEARS N 17 1/2° E 246.2 FT (AGREES WITH REN. RECORDS) OBT?

C.S. File No. 64/78-29

Monument Set (Procedure and Description)

NONE

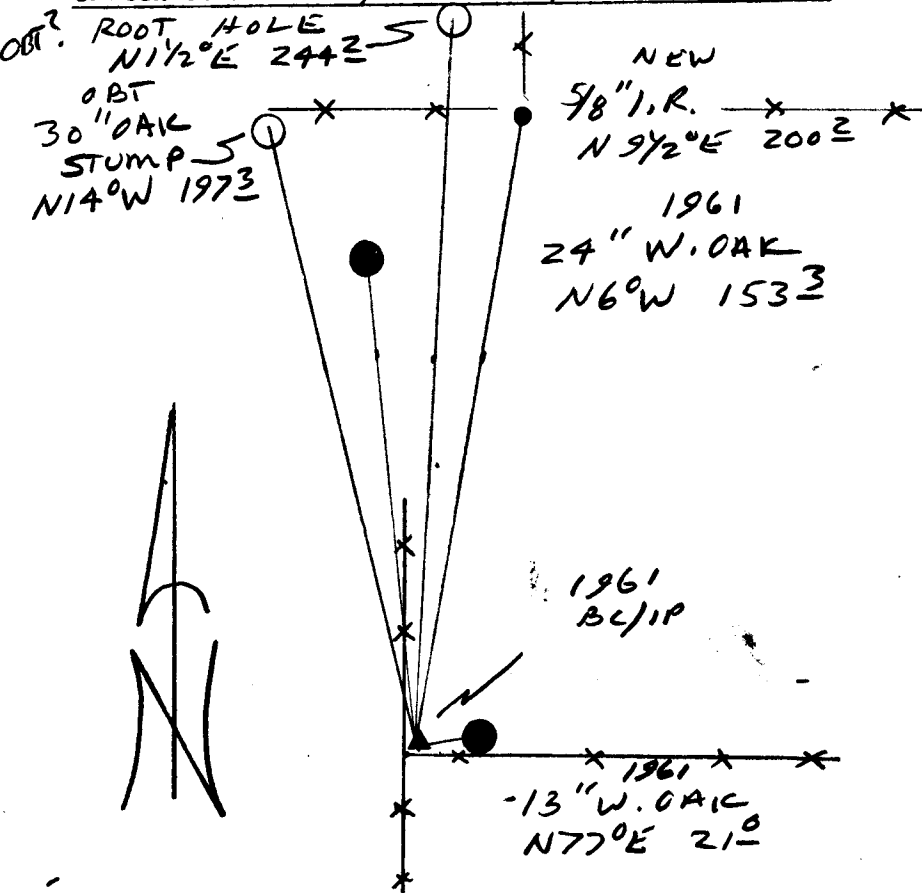
Monument Detail

N/A

New Accessories

F.D. 5/8" I.R. PROTRUDES 5" ABOVE GROUND, BEARS N 9 1/2° E, 200.2 FT

Sketch of Monument, Accessories, and General Area



Location & Comments

FENLY CORNER BEARS
S 70° W 6 FT

Comp. Declin. 17 3/4° E
 Agency DCSO
 Party Chief RANDALL W. SMITH
 Notekeeper
 Witnesses STEPHEN J. FLAISE

Address

Surveyor's Seal
 REGISTERED
 PROFESSIONAL
 LAND SURVEYOR
 RANDALL W. SMITH
 EXPIRES 6-30-98
 OREGON
 JULY 25, 1980
 RANDALL W. SMITH
 2469