

GOVERNMENT CORNER RESTORATION FORM

Date: 12-4-97 By: PBC

Township 25S Range 5W Sec. 5 County DOUGLAS This survey consists of: _____

State OR Date 11-18-97 No. _____ Narrative: _____

Corner Designation _____ Corner Rpt: CS 6478-28

$\frac{1}{4} \frac{55}{58}$

DOUGLAS COUNTY

Condition SURVEYED Only

Not Found

Renewed

Unrecorded

Surveyed In

Referenced Out

MONUMENT DETAIL

Previous Renewals NONE

Monument(s) Found: (Condition and Source)

NONE

N/A

Accessories Found:

8" NW 17" DIA STANDING DEAD W. OAK, WE OPEN AND FIND REVERSE SCRIBING "BT" BEARS N 29 1/2° W, 320.8 FT AS PER REC. ORT ORIG. SE BT IS GONE.

N29

Monument Set (Procedure and Description)

2 3/8" DIA. BRASS CAP ON A 1 3/8" O.D.
 BY 32" LONG IRON PIPE IS
 SET AT POSITION DETERMINED
 BY ORIG. BT. BLIP SET
 12" BELOW GROUND.

DOUGLAS COUNTY SURVEYORS
 T25/S

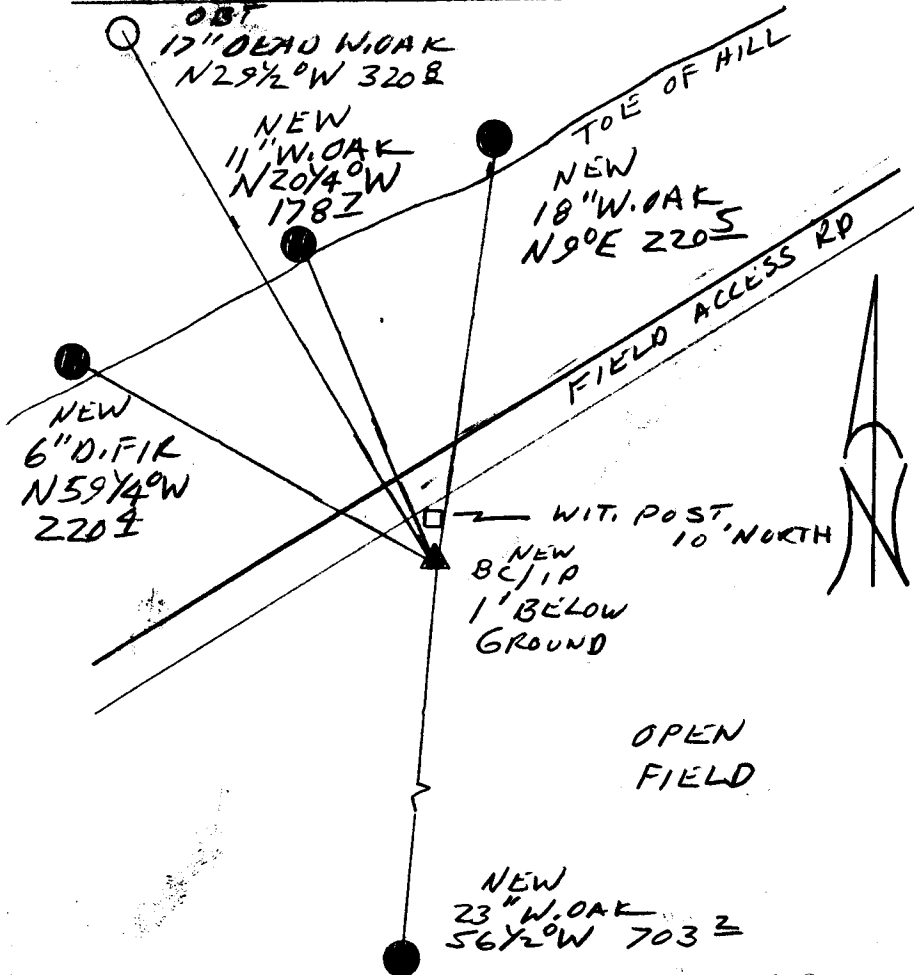
1/4 55 R
 58 S
 W

1997
 OFFICE

New Accessories

- 23" DIA. W. OAK SINGLE BLAZED AND SCRIBED "1/4 S 8 CS BT"
 BEARS S 6 1/2° W 703.2 FT
- 6" DIA. D. FIR DOUBLE BLAZED AND SCRIBED "1/4 S 5 CS BT"
 BEARS N 59 1/4° W 220.4 FT
- 11" DIA. W. OAK DOUBLE BLAZED AND SCRIBED "1/4 S 5 CS BT"
 BEARS N 20 1/4° W 178.7 FT
- 18" DIA. W. OAK DOUBLE BLAZED AND SCRIBED "1/4 S 5 CS BT"
 BEARS N 09° E 220.5 FT

Sketch of Monument, Accessories, and General Area



Location & Comments

CORNER LIES IN OPEN
 FIELD 20 FT SOUTH
 OF & TO FIELD ACCESS
 ROAD

A METAL WIT. POST AND
 SIGN ARE SET IN SOUTHWESTLY
 SHOULDER OF FIELD ACCESS
 ROAD 10 FT NORTH OF BLIP

Comp. Declin. 17 3/4° E
 Agency DCSO
 Party Chief RANDALL W. SMITH
 Notekeeper [Signature]
 Witnesses STEPHEN J. FLAVSK

Address

Surveyor's Seal

REGISTERED
 PROFESSIONAL
 LAND SURVEYOR

Expires 6-30-98

OREGON
 JULY 25, 1960
 RANDALL W. SMITH
 2469