

GOVERNMENT CORNER RESTORATION FORM

Date: 11-14-97 By: RC

Township 29S Range 8W Sec. 27 County DOUGLAS

This survey consists of:  
Map: \_\_\_\_\_

State OR Date 11-10-97 No. \_\_\_\_\_

Narrative: \_\_\_\_\_

Corner Designation \_\_\_\_\_

Corner Rpt: CS 64/78-25

S28 | S27  
S33 | S34

DOUGLAS COUNTY  
Condition Surveyed  
Not Found  
 Renewed  
Unrecorded  
Surveyed In  
Referenced Out

Previous Renewals 1949, 1967

Monument(s) Found: (Condition and Source)

2 1/2" BRASS CAP ON A 1 1/2" O.D.  
BY 26" LONG UN FLANGED  
IRON PIPE (1967) FOUND  
OUT OF GROUND.

3/4" I.D. IRON PIPE BEAR  
PROTRUDS 12" OUT OF GROUND.  
(SOURCE UNKNOWN)

COUNTY SURVEYORS OFFICE  
T29S R8W

S28 | S27  
S33 | S34  
1967

Accessories Found:

PLUMB POSITION OF 3/4" I.P.

NW BT FROM 1949 RENEWAL NOW GONE

50" NOW OUT OF GROUND AND ROTTED D. FIR,  
ROOT HOLE NEAR RECORD "S6374°E, 73.7 FT" 1949

32" NOW 38" DIA. D. FIR WITH WITH A FULLY HEALED  
HIGH SINGLE BLAZE BEARS N 65° E, 53.5 FT  
(AGREES WITH REC.) 1949

22" NOW 32" DIA. W. FIR WITH A FULLY HEALED DOUBLE  
BLAZE BEARS S 22 3/4° W 60.5 FT (REC.  
S 22 3/4° W, 59.7 FT DIST IS A FACE MEASUREMENT) 1949

13" NOW 29" DIA. W. FIR WITH A PARTIALLY HEALED  
DOUBLE BLAZE, ILLEGIBLE SCRIBING VISIBLE BEARS  
S 42° E, 9.0 FT. (AGREES WITH REC.) 1967

24" NOW 30" DIA 5 FT HIGH W. FIR STUMP  
WITH A PARTIALLY HEALED DOUBLE BLAZE  
SCRIBING VISIBLE "8" BEARS N 67 1/2° W,  
25.3 FT (REC N 67 1/2° W, 25.9 FT DIST.  
IS A SLOPE MEASUREMENT) 1967

MONUMENT DETAIL

RENEWAL

Monument Set (Procedure and Description)

Monument Detail

2 3/8" DIA BRASS CAP ON A 1 3/8" OLD BY 32" LONG IRON PIPE IS SET AT REFERENCED PLUMB POSITION OF FOUND 3/4" I.P. BC/IP PROTRUDES 7" ABOVE GROUND.

FOUND 3/4" I.P. MEASURED 32" LONG IS SET ALONG SOUTH EDGE OF BC/IP BENT EASTERLY 12" OUT OF GROUND

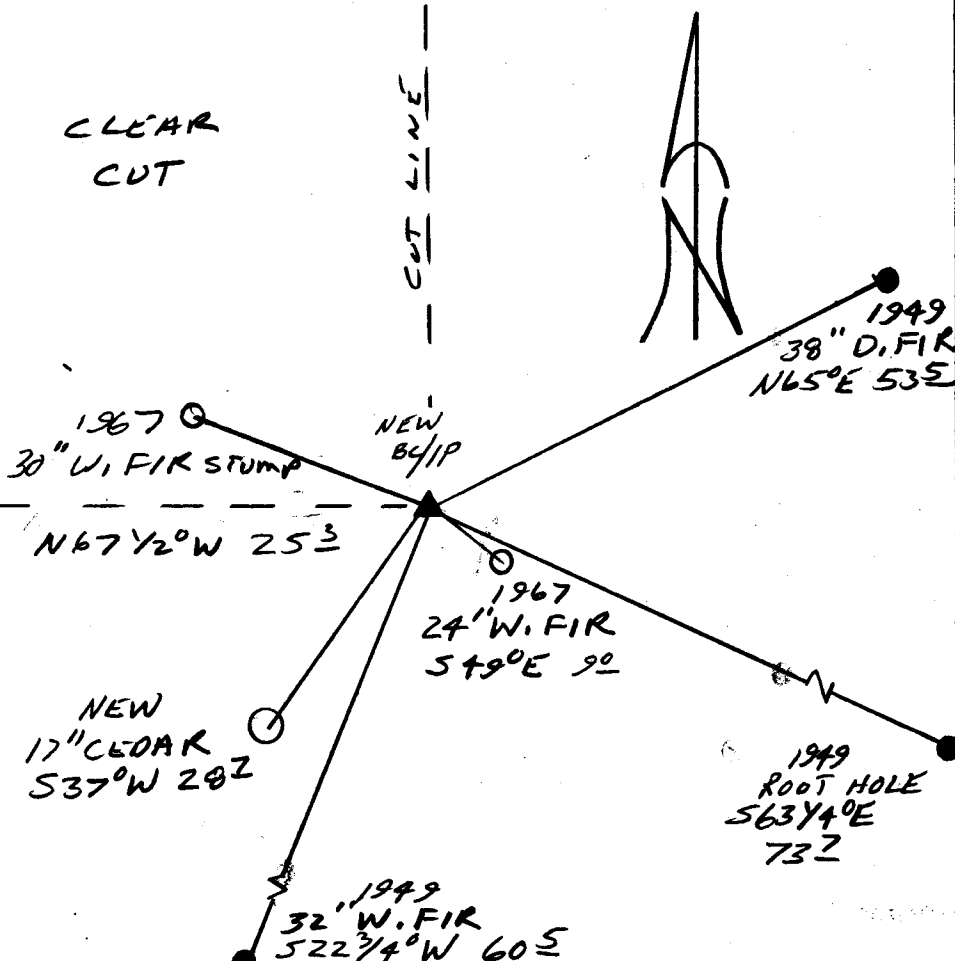
FOUND 1967 BC/IP IS SET CAP DOWN ALONG NORTHERLY EDGE OF NEW BC/IP. 1967 BC/IP IS BENT NORTHERLY 12" OUT OF GROUND

DOUGLAS COUNTY SURVEYORS OFFICE  
T29S  
128W  
S28 | S27  
S33 | S32  
1989

New Accessories

17" DIA. CEDAR DOUBLE BLAZED AND SCRIBED "T29S R8W S33 CS BT", BEARS ~~S33 CS BT~~ S37W, 28.7 FT

Sketch of Monument, Accessories, and General Area



Location & Comments

Blank lines for location and comments.

Comp. Declin. 17 3/4° E  
Agency DCSO  
Party Chief RANDALL W. SMITH  
Notekeeper [Signature]  
Witnesses STEPHEN J. FLAISE

Address

Surveyor's Seal

REGISTERED PROFESSIONAL LAND SURVEYOR

*Randall W. Smith*  
EXPIRES 6-30-99

OREGON  
JULY 25, 1990  
RANDALL W. SMITH  
2469