



Monument Set (Procedure and Description)

Monument Detail

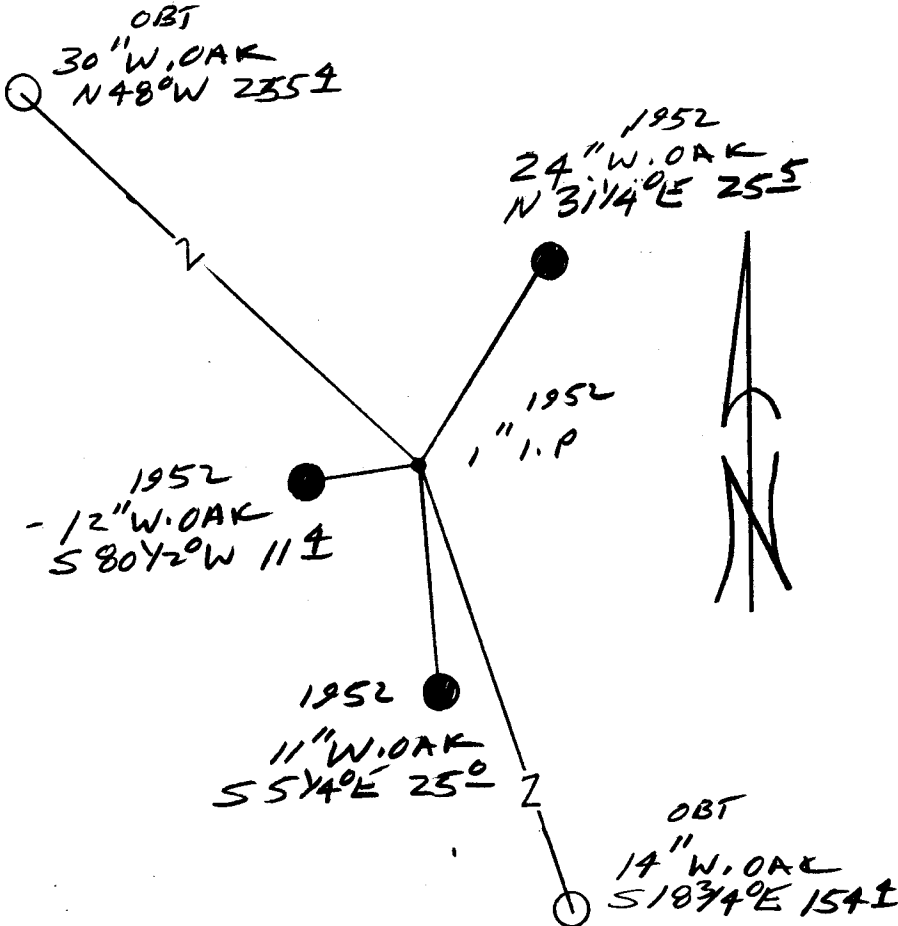
NONE

N/A

New Accessories

NONE

Sketch of Monument, Accessories, and General Area



Location & Comments

Comp. Declin. 17¾°E  
 Agency DCSS  
 Party Chief RANDALL W SMITH  
 Notekeeper [Signature]  
 Witnesses STEPHEN J FLAUS

Address

Surveyor's Seal

REGISTERED  
 PROFESSIONAL  
 LAND SURVEYOR

*Randall W Smith*  
 6-30-98

OREGON  
 JULY 25, 1990  
 RANDALL W. SMITH  
 2469