

GOVERNMENT CORNER RESTORATION FORM

Date: 10-21-97 By: PS

Township 24S Range 5W Sec. 34

County DOUGLAS This survey consists of:

State OR Date 10-1-97

No. _____ Narrative: _____

Corner Rpt: CS 64/78-15

Corner Designation

$\frac{1}{4} \frac{S34}{S3}$

PI# 440700

Previous Renewals 1933 + 1957 DC50

- DOUGLAS COUNTY SURVEYOR**
- Condition Report Only
 - Not Found
 - Renewed
 - Unrecorded
 - Surveyed In
 - Referenced Out

MONUMENT DETAIL

Monument(s) Found: (Condition and Source)

2 1/2" BRASS CAP ON A 1 1/2" O.D. IRON PIPE, BENT PROTRUDS 18" ABOVE GROUND (1957)

COUNTY SURVEYORS
T24S R5W

$\frac{1}{4} S. \frac{34}{3}$
T25S R5W
1957
OFFICE

Accessories Found:

40" NOW 48" DIA W. OAK WITH A LARGE PREVIOUSLY OPENED BLAZE, NO SCRIBING VISIBLE. BEARS S35 1/2° W, 1551.6 FT (AS PER RECORD). NE 13T FROM 1957 NOW GONE.

C.S. File No. 64/78-15

Monument Set (Procedure and Description)

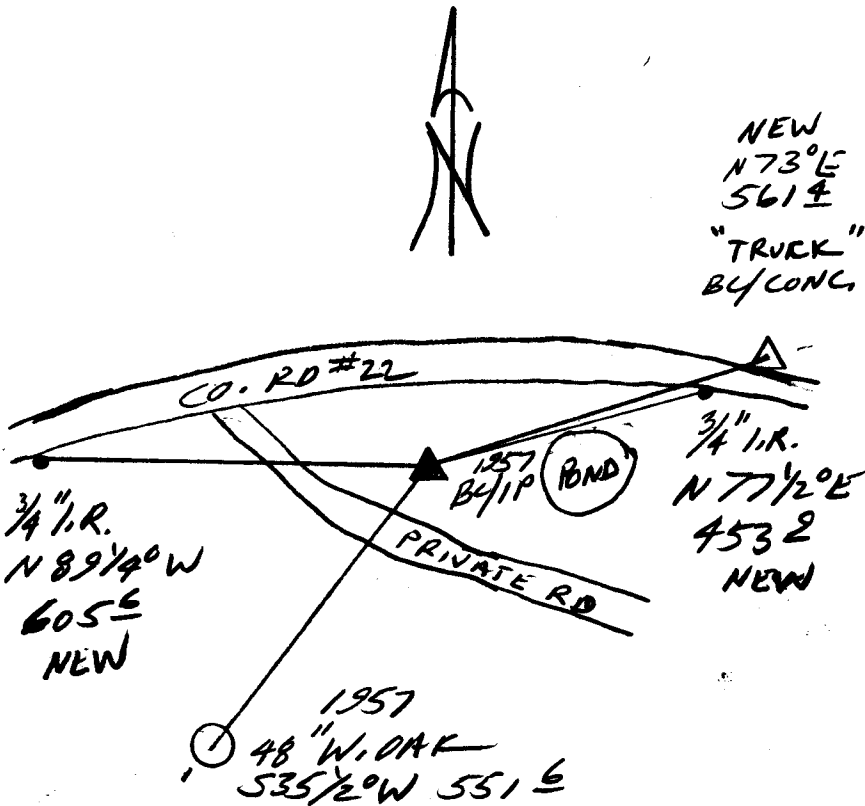
PLUMB POSITION OF BC/IP IS REFERENCED, BC/IP MEASURES 36" LONG IS STRAIGHTENED AND SET AT REFERENCE POSITION. PROTRUSERS 3" ABOVE GROUND.

N/A

New Accessories

DCSO BRASS CAP IN CONCRETE "TRUCKS 1280"
BEARS N73°E, 561.4 FT.
3/4" I.R. (52 + 18.80' RT) IN SOUTHERLY RW FENCE
BEARS N77 1/2°E, 453.2 FT.
3/4" I.R. (41 + 65.78' RT) IN SOUTHERLY RW FENCE
BEARS N89 1/4°W, 605.6 FT.

Sketch of Monument, Accessories, and General Area



Location & Comments

CORNER LIES IN AN OPEN FIELD 65 FT SOUTHERLY OF RIVER VALLEY RD AND 125 FT WESTERLY OF A SMALL POND

Comp. Declin. 173 1/4°E
Agency DCSO
Party Chief RANDALL W. SMITH
Notekeeper
Witnesses STEPHEN J. FLAUS

Address

Surveyor's Seal
REGISTERED PROFESSIONAL LAND SURVEYOR
JULY 25, 1900
RANDALL W. SMITH
2480