

RENEWAL

Monument Set (Procedure and Description)

Monument Detail

NONE

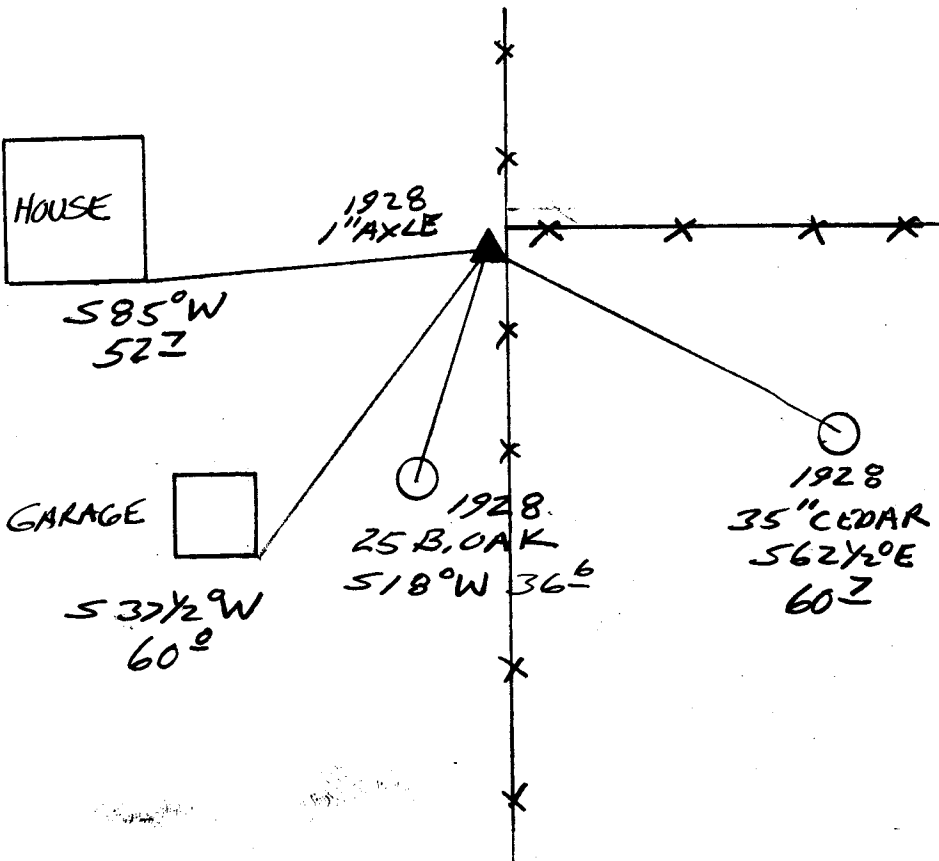
N/A

New Accessories

SE CORNER OF CONCRETE GARAGE FOUNDATION
BEARS S37 1/2°W, 60.0 FT

SE CORNER OF CONCRETE HOUSE FOUNDATION
BEARS S85°W, 52.7 FT FT

Sketch of Monument, Accessories, and General Area



Location & Comments

CORNER LIES 1 FT SOUTH
AND 1 1/2 FT WEST OF
A FENCE CORNER WITH
FENCES RUNNING N-S
AND EAST NEAR
TOP OF A KNAB APPROX

Comp. Declin. 17 3/4° E
Agency DC50
Party Chief RANDALL W. SMITH
Notekeeper
Witnesses STEPHEN FLAISE

Address

Surveyor's Seal

REGISTERED
PROFESSIONAL
LAND SURVEYOR

Randall W. Smith
EXPIRES 6-30-98

OREGON
JULY 25, 1980
RANDALL W. SMITH
2469