



RENEWAL

Monument Set (Procedure and Description)

Monument Detail

SET A 2 7/8" DIA BRASS CAP ON A  
 1 3/8" O.D. BY 32" LONG IRON  
 PIPE AT REC BRC & DIST. FROM  
 REMAINING BT. MONUMENT IS  
 SET 1" BELOW ROAD SURFACE.

DOUGLAS COUNTY SURVEYORS  
 T 305

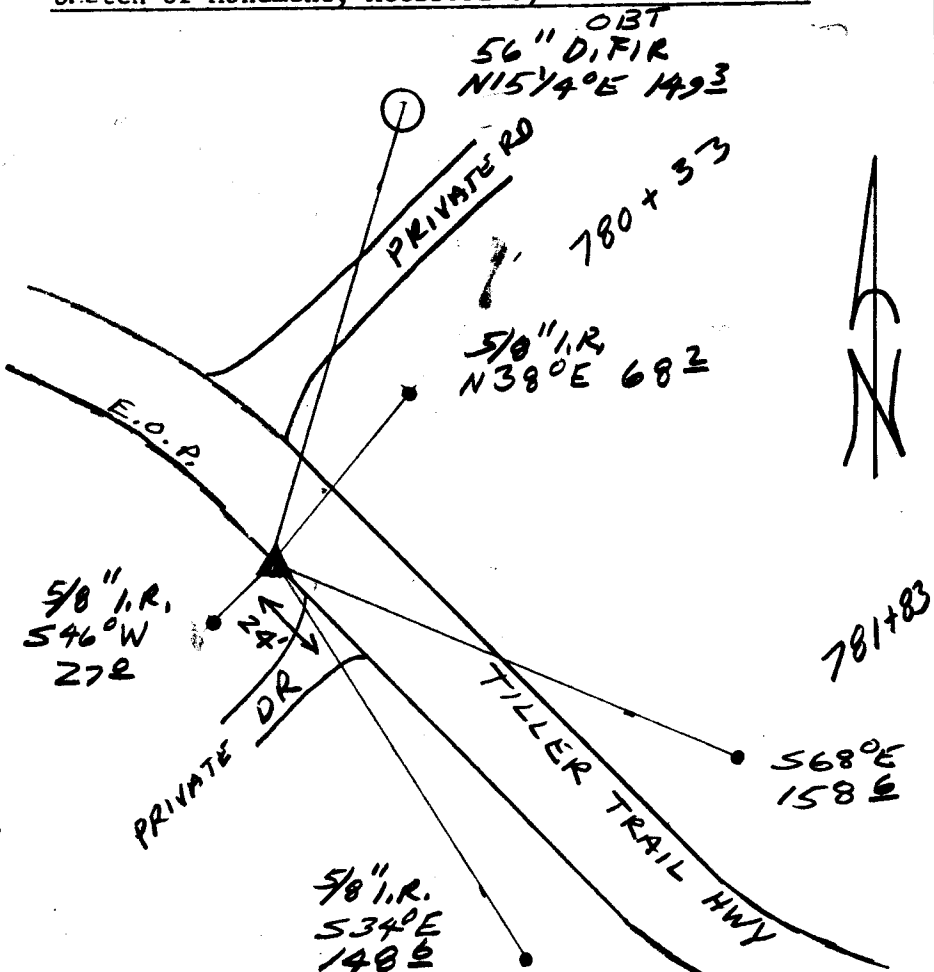
1/4 S29/S28 R  
 3  
 W

1997  
 OFFICE

New Accessories

5/8" I.R. (780+33 50' LT) BEARS N38°E, 68.2 FT  
 5/8" I.R. (780+33 50' RT) BEARS S46°W, 27.0 FT  
 5/8" I.R. (781+83 50' RT) BEARS S34°E, 148.6 FT  
 5/8" I.R. (781+83 50' LT) BEARS S68°E, 158.6 FT

Sketch of Monument, Accessories, and General Area



Location & Comments

CORNER LIES ON  
 SOUTHERN EDGE OF  
 ROAD IN GRAVEL  
 SHOULDER 3" OFF  
 OF EDGE OF PAVEMENT.

300 FT NW 1/4 OF  
 MILE POST 18

Comp. Declin. 173 1/4°E  
 Agency DCSA  
 Party Chief RANDALL W. SMITH  
 Notekeeper [Signature]  
 Witnesses STEPHEN J. FRASE

Address

Surveyor's Seal

REGISTERED  
 PROFESSIONAL  
 LAND SURVEYOR

[Signature]  
 EXPIRES 6-30-98

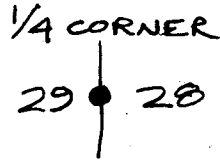
OREGON  
 JULY 25, 1990  
 RANDALL W. SMITH  
 2409

GOVERNMENT CORNER RESTORATION FORM

Township 30S Range 3W Sec. 28 County DOUGLAS

State OR Date 8-10-83 No. \_\_\_\_\_

Corner Designation



- Condition Report Only
- Not Found
- Renewed
- Unrecorded
- Surveyed In
- Referenced Out

Previous Renewals # 3, # 134

Monument(s) Found: (Condition and Source)  
BRASS CAP MARKED AS MONUMENT DETAIL  
SHOWS. PIPE W/CAP IS BENT.

NO SIGN OF STONE CALLED FOR IN  
RENEWALS #3 & #134

MONUMENT DETAIL

COUNTY SURVEYORS OFFICE  
 T30S  
 1/4 S. 29 | 528  
 R 3W  
 1963

Accessories Found: <sup>now 56"</sup>  
FOUND 48" INCH DIAMETER RED FIR NOW 56 INCHES IN DIAMETER  
BEARS N 15 1/4° E 149 1/2 FT. (REC. N 15° E 148 1/2 FT).

3/4 INCH I.R. AT FENCE CORNER NOT FOUND.

USGS BM 911 G (BRASS CAP ON PIPE APPROX. 2 FT ABOVE  
GROUND) BEARS S 83° E 27.98 FT.

NO OTHER ACCESSORIES FOUND.

move to CS 64/78-12

2/12/09

CS 64/78-12

C

RENEWAL

Monument Set (Procedure and Description)

Monument Detail

DUG AROUND BENT PIPE AND DETERMINED WHERE IT WENT STRAIGHT INTO THE GROUND, WHICH INDICATES THE UNDISTURBED LOCATION OF THE MONUMENT. WE MEASURE TO REFERENCES; DIG UP PIPE AND CAP, STRAIGHTEN AND RESET IT, STAMPING "RESET 1983" IN CAP.

COUNTY SURVEYORS OFFICE

T305

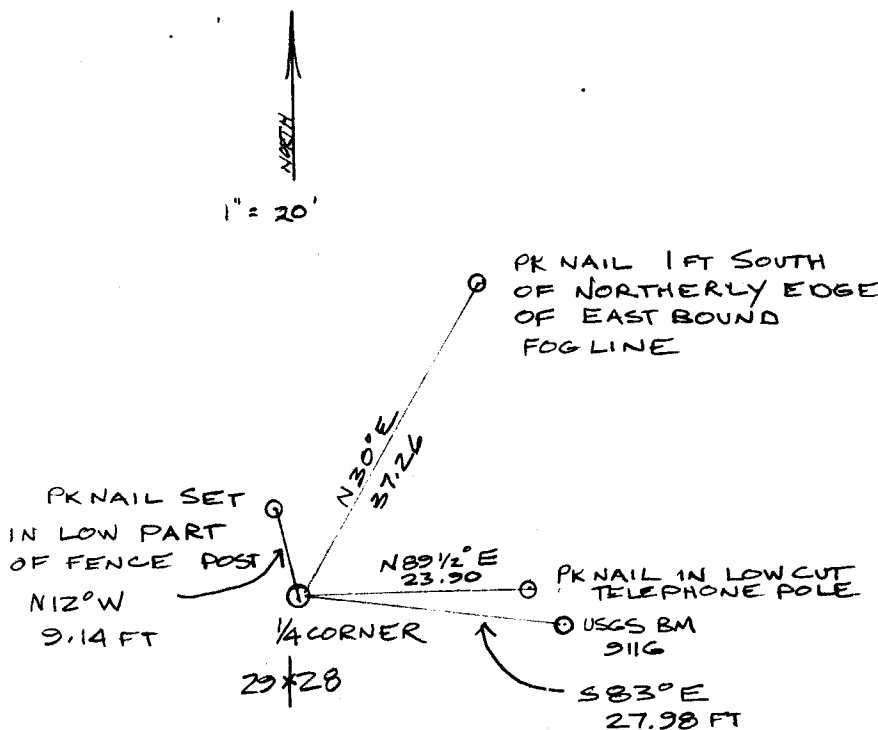
1/4 S29 | S28

RESET R3W  
1983 1963

New Accessories

SET PK NAILS AS SHOWN IN SKETCH FOR TEMPORARY REFERENCES.

Sketch of Monument, Accessories, and General Area



Location & Comments

SET PK NAILS FOR TEMPORARY REF. POINTS. WE WILL RETURN ONCE THE R. FIR IS HIGH CUT AND THE BLM ROAD CONSTRUCTED TO SCRIBE NEW TREES.

Comp. Declin. 19° E

Agency DCSD.

Party Chief LEMONREAN

Notekeeper J. LUNDEEN

Witnesses

*Janet R. Sundeen*

Surveyor's Seal

REGISTERED PROFESSIONAL LAND SURVEYOR

*Larry E. Monrean*

OREGON  
JULY 13, 1979  
LARRY E. MONREAN  
#1830