

GOVERNMENT CORNER RESTORATION FORM

Date: 10-13-97 By: PC

Township 25S Range 5W Sec. 13 County DOUGLAS

This survey consists of:

State OR Date 10-9-97 No. _____

Narrative: _____

Corner Rpt: CS 6A/78-11

Corner Designation

1/4 S 19 | S 24

DOUGLAS COUNTY SURVEYOR

- Condition Report Only
- Not Found
- Renewed
- Unrecorded
- Surveyed In
- Referenced Out

Previous Renewals 1972

MONUMENT DETAIL

Monument(s) Found: (Condition and Source)

NO MONUMENT FOUND

N/A

Accessories Found:

14" NOW 25" DIA. D. FIR WITH A FULLY HEALED SINGLE BLAZE, BEARS N 65° E, 35.6 FT (AGREES WITH REC.) 1972

6" NOW 21" DIA. D. FIR WITH A FULLY HEALED SINGLE BLAZE, BEARS S 60° W, 33.5 FT (REC S 9° W, 33.5 FT) 1972

RENEWAL

Monument Set (Procedure and Description)

2 3/8" DIA BRASS CAP ON A 1 3/8"
 O.D. BY 32" LONG IRON PIPE
 15 SET FROM 1972 BT'S
 PROTRUDS 3" ABOVE GROUND

Monument Detail

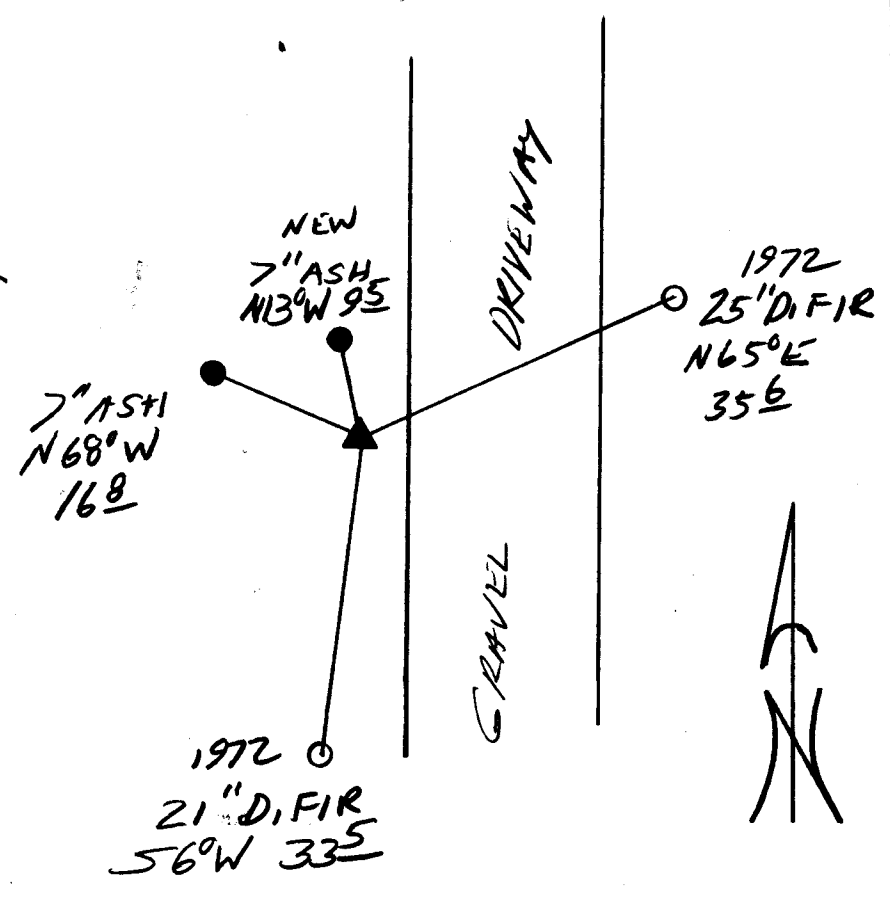
DOUGLAS COUNTY SURVEYOR
 T 255
 R 1/4 R
 6 524 / S 19 5
 W W

1997
OFFICE

New Accessories

7" DIA ASH DOUBLE BLAZED AND SCRIBED "1/4 S 24 CS BT."
 BEARS N 13° W, 2.5 FT
 7" DIA ASH DOUBLE BLAZED AND SCRIBED "1/4 S 24 CS BT"
 BEARS N 68° W, 16.8 FT

Sketch of Monument, Accessories, and General Area



Location & Comments

Comp. Declin. 17 3/4' E
 Agency DCSO
 Party Chief RANDALL W. SMITH
 Notekeeper
 Witnesses STEPHEN J. FRAUSE

Address

Surveyor's Seal

REGISTERED
 PROFESSIONAL
 LAND SURVEYOR

Randall W. Smith
 6-30-98

OREGON
 JULY 25, 1990
 RANDALL W. SMITH
 2488