

GOVERNMENT CORNER RESTORATION FORM

Date: 10-13-97 By: AC

Township 28 S Range 6 W Sec. 18 County DOUGLAS

This survey consists of:

State OR Date 10-9-97 No. _____

Narrative: _____

Corner Designation

Corner Rpt: CS 64/78-10

S13 | S18
S24 | S19
PI# 100400

- DOUGLAS COUNTY SURVEYOR
- Condition: Only
- Not Found
- Renewed
- Unrecorded
- Surveyed In
- Referenced Out

Previous Renewals 1973 FLI CS 53/14, 1973, 1982, + 1984 DCSO

MONUMENT DETAIL

Monument(s) Found: (Condition and Source)

NO MONUMENT OF RECORD FOUND

ALUM. NAIL AND 1" A HUB AND TACK

N/A

Accessories Found:

BRGS + DIST TAKEN FROM FOUND ALUM. NAIL

12" MAPLE BEARING N99W 46.1 FT PER 1982 RECORD IS NOW GONE

19" NOW DOUBLE TRUNKED MAPLE WITH A FULLY HEALED SINGLE BLAZE ON 23" DIA. SOUTHERLY TRUNK ROOT CROWN OF SOUTHERLY TRUNK BEARS N56°E, 159.8 FT (AGREES WITH 1984 RECORD), 1982

48" NOW 46" DIA COTTONWOOD WITH A FULLY HEALED DOUBLE BLAZE, BEARS N22 1/2°W, 211.7 FT (AGREES WITH 1982 RECORD), 1982

47" NOW DOUBLE TRUNKED COTTONWOOD WITH A 46" DIA. WESTERLY TRUNK BEARS S60°E 51.1 FT TO CENTER OF ROOT CROWN (REC. SAME 3.1 FT TO A BOAT SPIKE THAT WAS NOT FOUND. (THE SINGLE BLAZE AND SCRIBE 728 S R 6 W S19 CS RT), 1982

NOTE REC BRG + DIST FROM NAIL GONE TO BARK OF TREE REC BRG + DIST FROM HT IS SHORT OF TREE.

RENEWAL

Monument Set (Procedure and Description)

2 3/8" BRASS CAP ON A 1 3/8" O.D.
 BY 32" LONG IRON PIPE IS
 SET AT POSITION OF FORMER
 FINAL B.C.I.P. PROTRUDERS
 4" ABOVE GROUND.

Monument Detail

DOUGLAS COUNTY SURVEYORS
 T28S

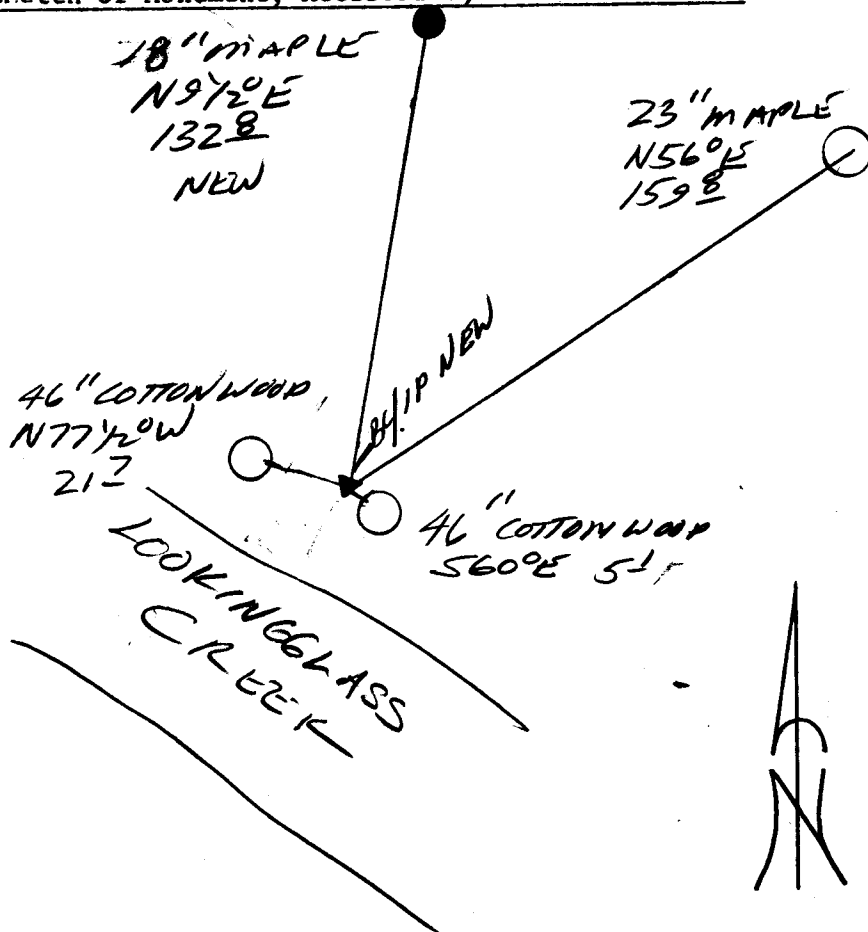
R	513	518	R
7			6
W	524	519	W

1997
 OFFICE

New Accessories

18" DIA. MAPLE SINGLE BLAZED "T28S R6W S18 CS BT"
 BEARS N 9 1/2° E, 132.8 FT

Sketch of Monument, Accessories, and General Area



Location & Comments

Comp. Declin. 17 3/4° E
 Agency OLSO
 Party Chief RANDALL W. SMITH
 Notekeeper
 Witnesses STEPHEN FLAISE

Address

Surveyor's Seal

REGISTERED
 PROFESSIONAL
 LAND SURVEYOR

Randall W. Smith
 57026 630-99

OREGON
 JULY 25, 1980
 RANDALL W. SMITH
 2489