

GOVERNMENT CORNER RESTORATION FORM

Date: 9-26-97 By: PC  
This survey consists of:

Township 24S Range 5W Sec. 35 County DOUGLAS Map: \_\_\_\_\_  
State OR Date 9-24-97 No. \_\_\_\_\_ Narrative: \_\_\_\_\_  
Corner Apt: CS 64/78-6

Corner Designation

$\frac{1}{4}$   $\frac{S35}{S2}$

DOUGLAS COUNTY SURVEYOR

- Condition Report Only
- Not Found
- Renewed
- Unrecorded
- Surveyed In
- Referenced Out

MONUMENT DETAIL

Previous Renewals 1922 + 1960 DCSO

Monument(s) Found: (Condition and Source)

2 1/2" DIA BRASS CAP ON A  
1 1/2" O.D. IRON PIPE, PROTRUDES  
11" ABOVE GROUND. (1960)

COUNTY SURVEYORS OFFICE  
T 24S R SW

$\frac{1}{4}$   $\frac{S35}{S2}$   
T 25S R SW  
1960

Accessories Found:

14" W. OAK NOW 23" DIA B. OAK WITH A FULLY  
HEALED PREVIOUSLY OPENED BLAZE, BEARS N 89° E  
26.7 FT (AGREES WITH REC.) 1922

10" NOW DOWN AND ROTTED 6" DIA OAK  
ROOT HOLE BEARS N 46° E 15.0 FT (AGREES  
WITH REC.) 1960 - NO SCRIBE OR BLAZE FOUND

8" NOW DOWN AND ROTTED 5" DIA. D. FIR, NO  
SCRIBE OR BLAZE FOUND, ROOT HOLE BEARS  
S 58° E 41.6 FT (AGREES WITH REC.) 1960

RENEWAL

Monument Set (Procedure and Description)

Monument Detail

NONE

N/A

New Accessories

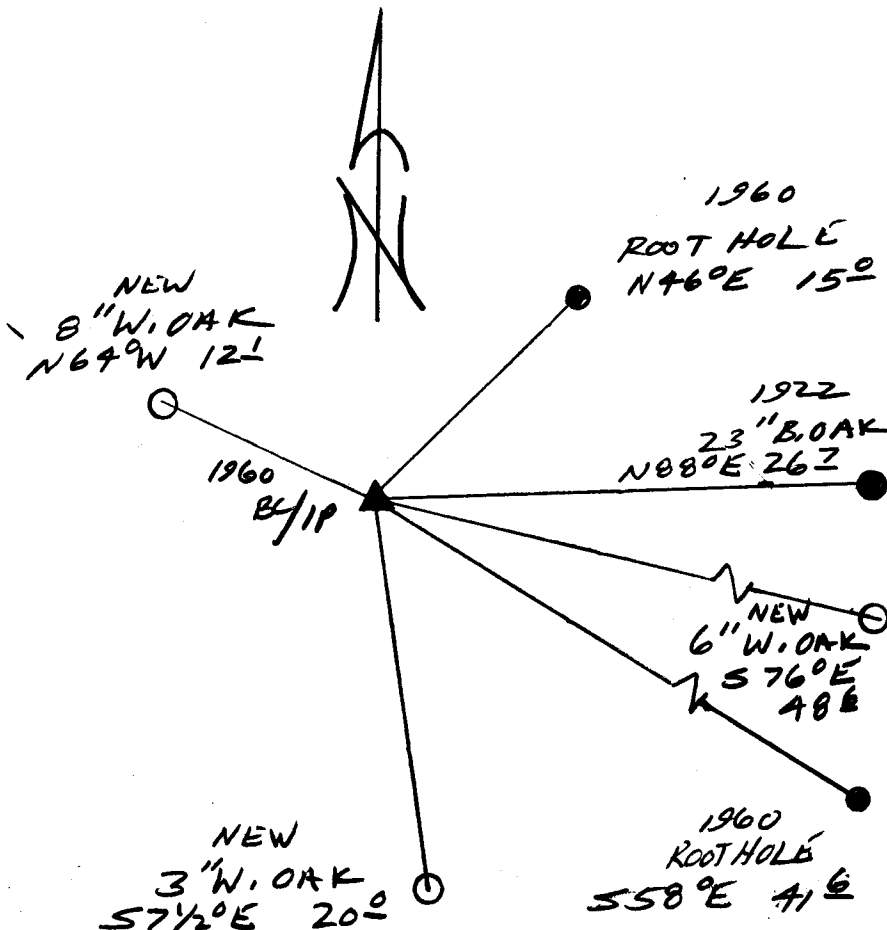
8" DIA W. OAK DOUBLE BLAZED AND SCRIBED "Y4535CSBT"  
BEARS N 64° W, 18.1 FT

6" DIA W. OAK DOUBLE BLAZED AND SCRIBED "Y452CSBT"  
BEARS S 76° E, 48.6 FT

3" DIA W. OAK DOUBLE BLAZED AND SCRIBED "X BT"  
BEARS S 7 1/2° E, 20.0 FT

Sketch of Monument, Accessories, and General Area

Location & Comments



Comp. Declin. 17 3/4° E  
 Agency DCSO  
 Party Chief RANDALL W. SMITH  
 Notekeeper *[Signature]*  
 Witnesses STEPHEN J. FLAVER

Address

Surveyor's Seal

REGISTERED  
 PROFESSIONAL  
 LAND SURVEYOR

*Randall W. Smith*  
 EXPIRES 6-30-98

OREGON  
 JULY 25, 1990  
 RANDALL W. SMITH  
 2469