

GOVERNMENT CORNER RESTORATION FORM

Date: 9-17-97 By: BC

This survey consists of:

Township 255 Range 5W Sec. 22 County DOUGLAS

State OR Date 9-9-97 No. _____

Narrative: _____
Corner Rpt: CS 6475-37

Corner Designation

DOUGLAS COUNTY
SURVEYOR

- Condition Report Only
- Not Found
- Renewed
- Unrecorded
- Surveyed In
- Referenced Out

$\frac{1}{4} \frac{S22}{S27}$

Previous Renewals 1973 DCSO RM 2-54

Monument(s) Found: (Condition and Source)

2 1/2" DIA. BRASS CAP ON A 1 1/2" I.D. IRON PIPE, PROTRUDES 14" ABOVE GROUND. (1973)

(NOTE THIS POSITION OF CORNER SET IN ERROR IN 1973)

BRASS CAP ON ABOVE MONUMENT IS SAWED OFF AND A DCSO YELLOW PLASTIC CAP IS SET ON TOP. IRON PIPE PROTRUDES 12" ABOVE GROUND.

COUNTY SURVEYORS OFFICE
7255 R5W

$\frac{1}{4} \frac{S22}{S27}$
1973

Accessories Found:

1973 BT'S
8" NOW 15" DIA D.FIR WITH A FULLY HEALED SINGLE BLAZE, BEARS N 84 1/2° W, 23.4 FT (REC. N 80° W, 23.4 FT)

5" NOW 12" DIA. PISTOL BUTT D.FIR WITH A FULLY HEALED SINGLE BLAZE, CENTER OF ROOT CROWN BEARS S 40° W, 11.7 FT (REC. S 54° W, 11.7 FT)

(NOTE: BLAZE AND SCRIBING REMOVED FROM 1973 BT'S)

RENEWAL

Monument Set (Procedure and Description)

2 3/8" DIA. BRASS CAP ON A 1 3/8" O.D. BY 32" LONG IRON PIPE IS SET AT A POSITION DETERMINED FROM 1973 DCSO SURVEY. BEIP PROTRUDES 4" ABOVE A LARGE MOUND OF STONE.

Monument Detail

DOUGLAS COUNTY SURVEYORS T 25 S

1/4 S22 R
S27 5
W

1997 OFFICE

NOTE: ERROR IN 1973 CORNER POSITION WAS MADE IN FIELD WHEN CORNER WAS SET. POSITION ON RM 2-54 IS 6000

New Accessories

- 26" DIA. D. FIR BARK SCRIBED "1/4 S27CS BT" BEARS S 69° E, 21.4 FT
- 15" DIA. D. FIR DOUBLE BLAZED AND SCRIBED "1/4 S27CS BT" BEARS S 32° W, 9.5 FT
- 12" DIA. D. FIR DOUBLE BLAZED AND SCRIBED "1/4 S22CS BT" BEARS N 45° W, 15.8 FT
- 3" DIA. D. FIR DOUBLE BLAZED AND SCRIBED "1/4 S22CS BT" BEARS N 31 1/2° E, 22.5 FT

Sketch of Monument, Accessories, and General Area

Location & Comments

CORNER LIES AT THE BOTTOM OF A EASTERLY RUNNING GULLY, 210 FT WEST OF A CORNER IN A DIRT ROAD.

Comp. Declin. 17 3/4° E
Agency DCSO
Party Chief RANDALL W. SMITH
Notekeeper
Witnesses STEPHEN J. FINNEY

Address

Surveyor's Seal

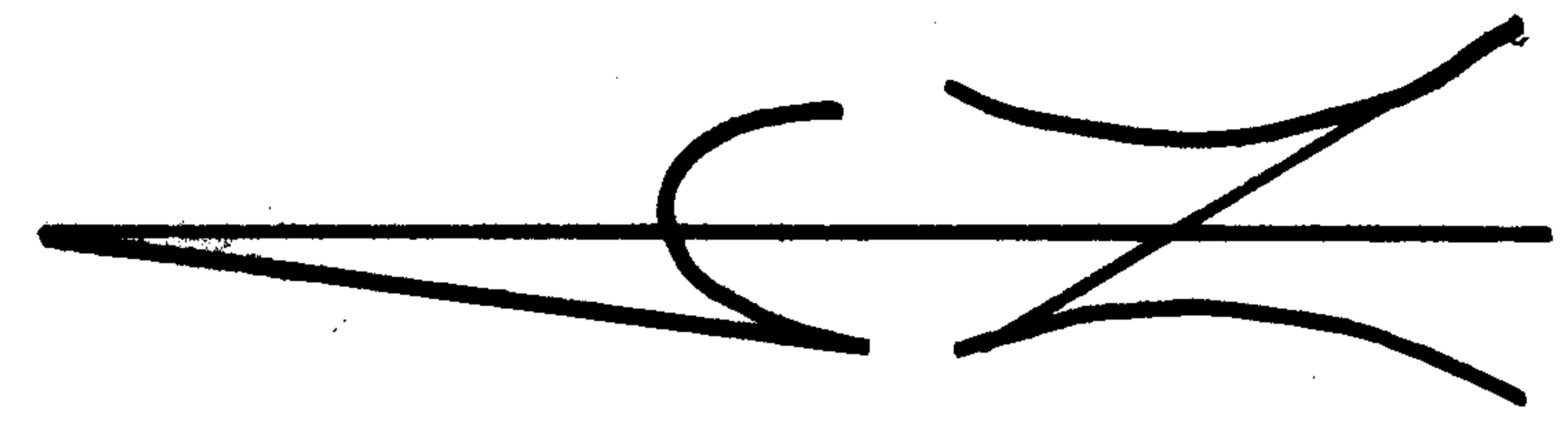
REGISTERED PROFESSIONAL LAND SURVEYOR

Randall W. Smith
EXPIRES 6-30-98

OREGON
JULY 25, 1990
RANDALL W. SMITH
2469

CX4
1973
DC50 BC/IP

(N0°05'W 2649.87)
2649.28
M 100.04
100°07'W



12" D.I.F.I.R.
N45°W
15 1/2 1991

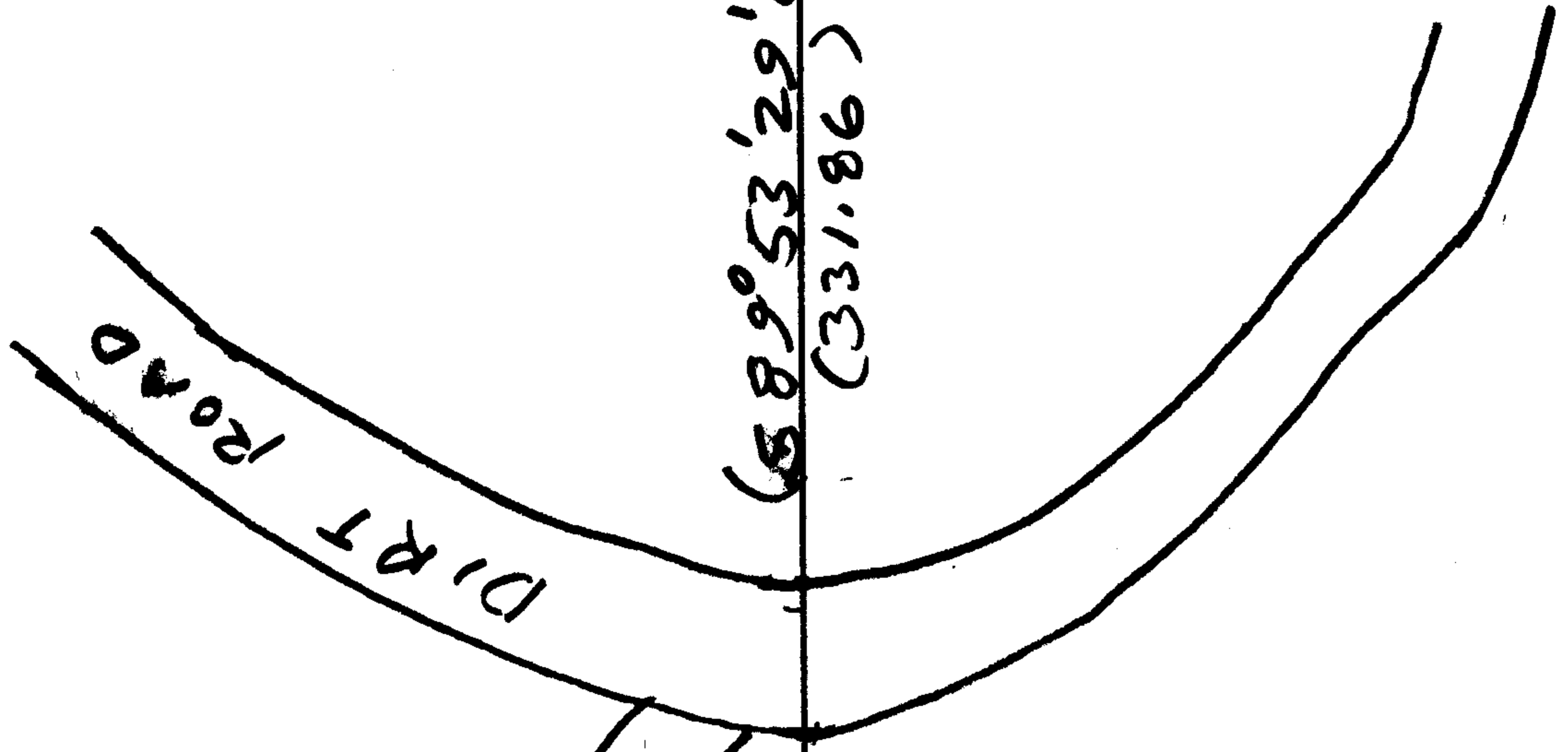
13" D.I.F.I.R.
N31 1/2°E 225

26" D.I.F.I.R.
S69°E 214

15" D.I.F.I.R.
S32°W 95

OLD FENCE
PARTIALLY DOWN

EAST RUNNING GULLY



(S89°53'29"E)
(331.86)

5/8" I.R.
4' SOUTH
5' WEST
OF FC
COR.

5/8" I.R.
12' SOUTH
OF FC
COR.

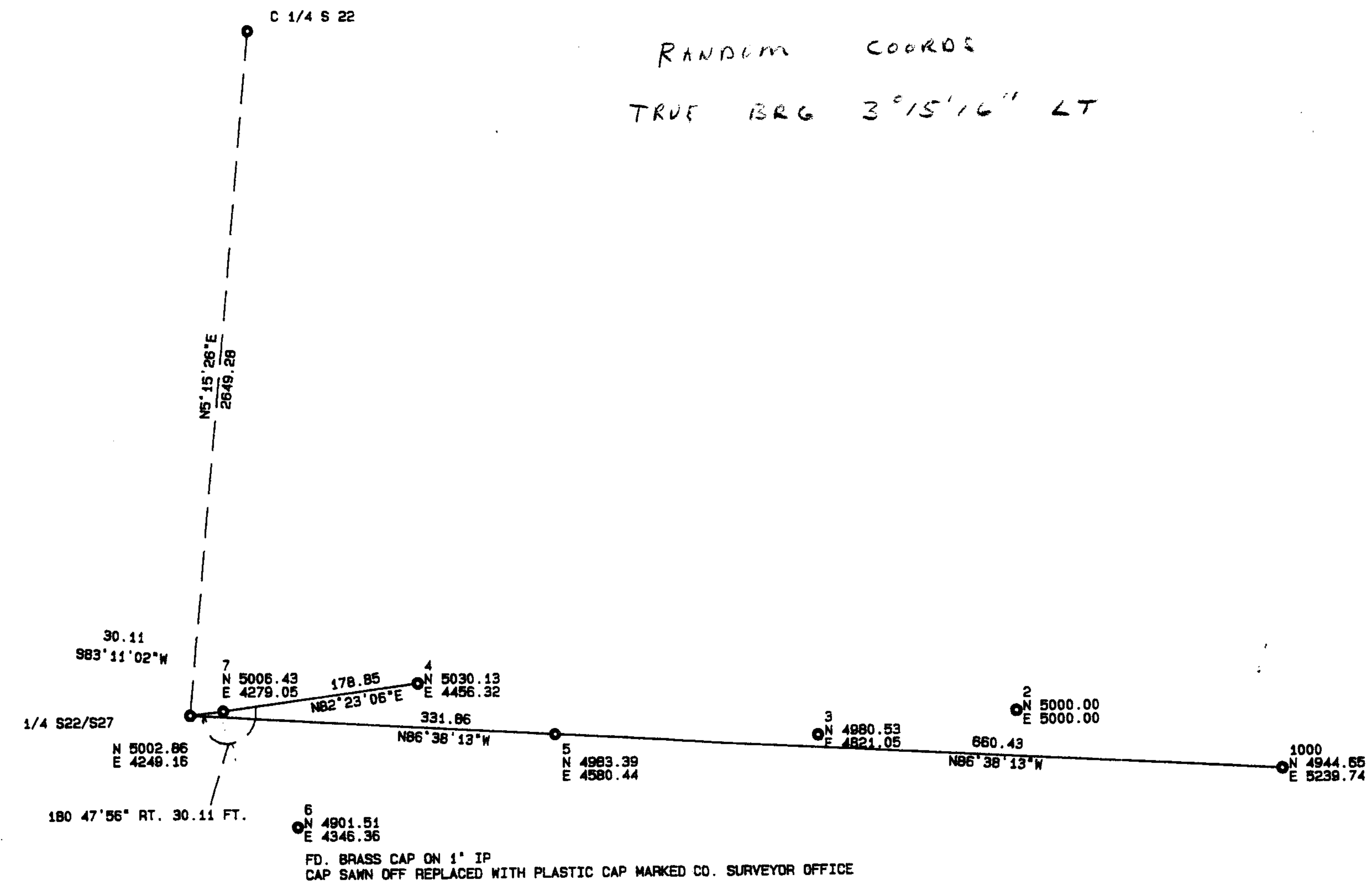
(660)
(S89°53'29"E)
660.43

OLD BLAZED LINE

1973
DC50
1 1/2" O.I.D. I.P.
WITH DC50
PLASTIC CAP
S97°E
140.43'

REGISTERED
PROFESSIONAL
LAND SURVEYOR
Randall W. Smith
OREGON
JULY 25, 1980
RANDALL W. SMITH
2489

RANDOM COORDS
 TRUE BRG 3°15'16" LT



1527/AJ .01 017 .2.0