

GOVERNMENT CORNER RESTORATION FORM

Date: 9-17-97 By: PC

Township 255 Range 4N Sec. 19 County DOUGLAS

This survey consists of:

State OR Date 8-14-97 No. \_\_\_\_\_

Narrative: \_\_\_\_\_  
Corner Rpt: CS 6A/75-35

Corner Designation

SSE  
DLC 50

- DOUGLAS COUNTY
- Condition SURVEYED only
- Not Found
- Renewed
- Unrecorded
- Surveyed In
- Referenced Out

Previous Renewals 1983 M94-1

Monument(s) Found: (Condition and Source)

5/8" IRON ROD PROTRUDES  
1" ABOVE GROUND BENT  
SOUTH + EASTWARD 1983

N/A

Accessories Found:

NO OBJECTS FOUND

26" NOW 31" DIA D/FIR WITH A FULLY HEALED  
SINGLE BLAZE, BEARS N 12 1/2° E 88.4 FT  
(REC. N 12 1/2° E, 184.6 FT DIST IS TO FACE) 1983

9" OAK NOW 17" DIA ASH WITH A FULLY  
HEALED SINGLE BLAZE, BEARS S 75 1/2° E  
63.8 FT (REC. S 75 1/2° E, 63.2 FT DIST IS TO FACE)  
1983

RENEWAL

Monument Set (Procedure and Description)

2 7/8" DIA. BRASS CAP ON A 1 7/8" O.D. BY 32" LONG IRON PIPE IS SET AT PLUMB POSITION OF FOUND I.R. SET FLUSH WITH GROUND. FOUND I.R. IS SET ALONG NORTH EDGE OF BC/IP 3" BELOW GROUND.

Monument Detail

DOUGLAS COUNTY SURVEYORS  
T255  
SSE | R  
DLC50 | 9  
| W

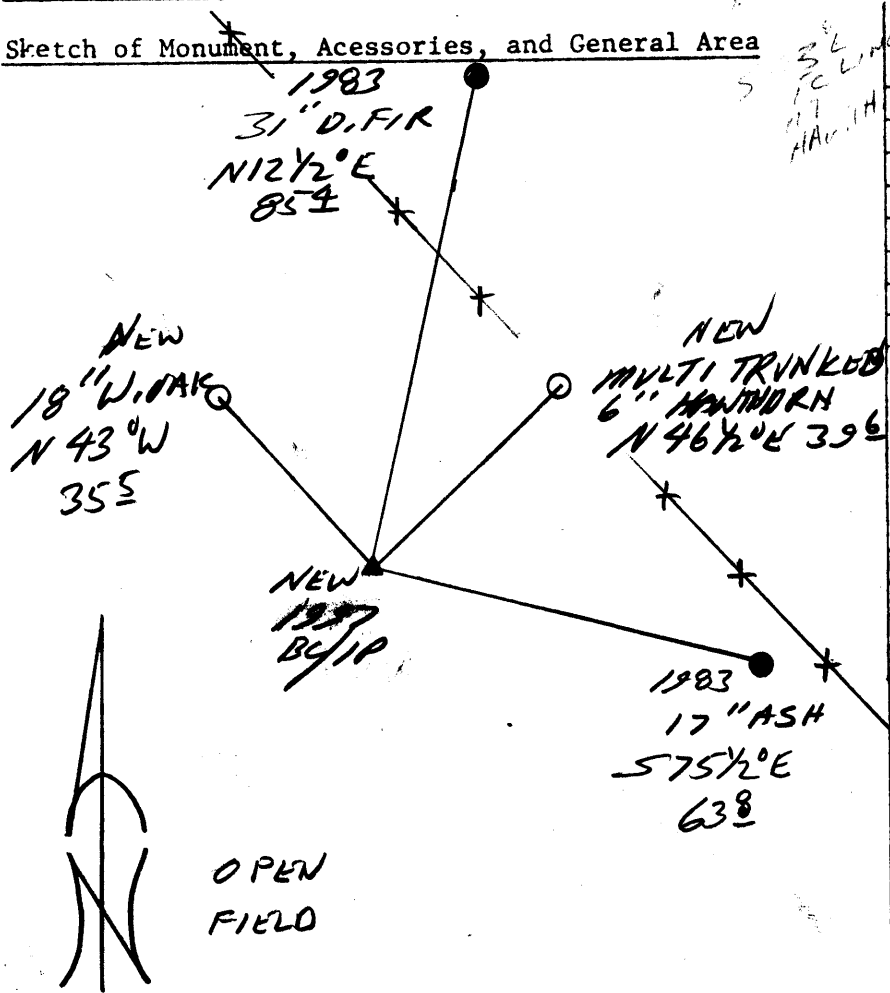
1997  
OFFICE

New Accessories

MULTI TRUNKED HAWTHORN SINGLE BLAZED AND SCRIBED "X BT" 3 1/2 FT ABOVE GROUND ON 6" DIA. S'WLY TRUNK. BEARS N46 1/2° E, 39.6 FT

18" DIA. W. OAK DOUBLE BLAZED AND SCRIBED "SSE DLC50 CS BT" BEARS N43° W, 35.5 FT

Sketch of Monument, Accessories, and General Area



Location & Comments

Comp. Declin. 17 3/4° E  
Agency DCSO  
Party Chief RANDALL W SMITH  
Notekeeper  
Witnesses STEPHEN J FINESE

Address

Surveyor's Seal

REGISTERED  
PROFESSIONAL  
LAND SURVEYOR

Randall W. Smith  
EXPIRES 6-30-98

OREGON  
JULY 25, 1990  
RANDALL W. SMITH  
2469

OPEN  
FIELD