

GOVERNMENT CORNER RESTORATION FORM

Date: 9-16-97 By: ABC

Township 25S Range 4W Sec. 18

County DOUGLAS This survey consists of:

State OR Date 8-6-97

No. \_\_\_\_\_  
Corner Post CS 04/75-33

Corner Designation

DLC  
38  
---  
DLC  
50

DOUGLAS COUNTY

- Condition SURVYOR only
- Not Found
- Renewed
- Unrecorded
- Surveyed In
- Referenced Out

Previous Renewals 1941 DCSO

Monument(s) Found: (Condition and Source)

SAND STONE MONUMENT THAT MEASURES 3" X 6" X 6" ABOVE GROUND FIRMLY SET WITH CROSS ON TOP (1941)

N/A

Accessories Found:

NO OBJ'S FOUND

12" LAUREL NOW ROOT HOLE, BEARS N 5° W, 15 FT (AGREES WITH REC) 1941

15" W. OAK NOW 18" OAK WITH A FULLY HEALED DOUBLE BLADE WE OPEN AND FIND PARTIAL SCRIBING, BEARS S 36° W, 45.9 FT (REC S 37° W 47.0 FT DIST, IS A SLOPE MEASUREMENT) 1941

Monument Set (Procedure and Description)

Monument Detail

CORNER LIES IN FENCE  
LINE NO BE/IP IS SET

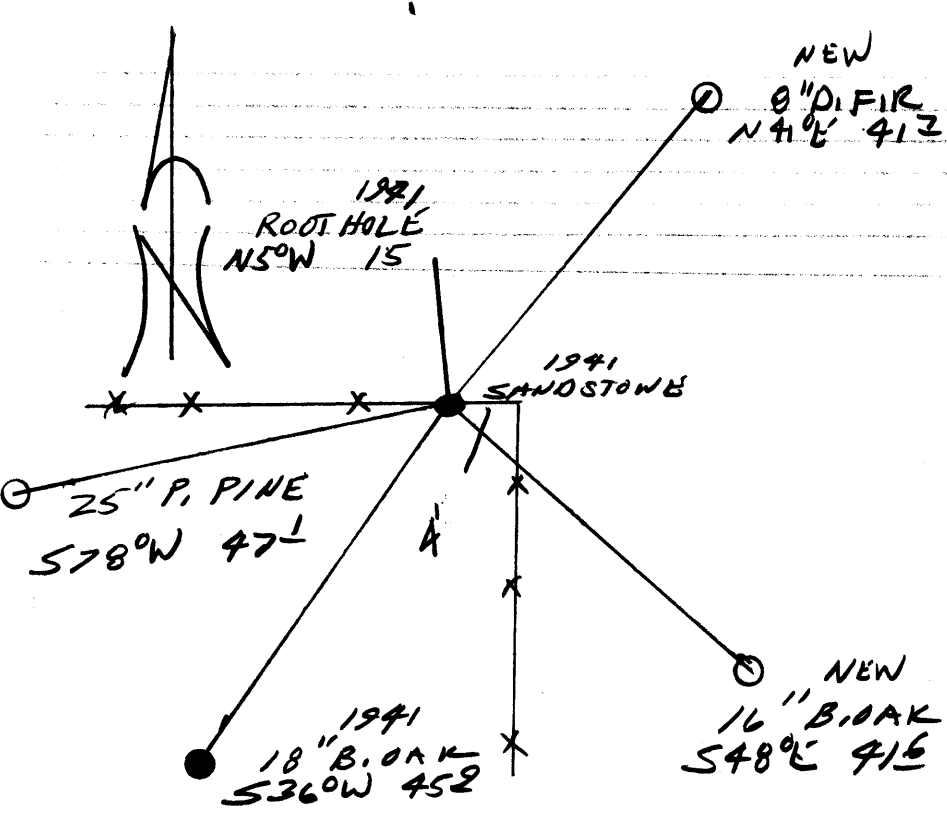
N/A

New Accessories

- 8" D. FIR DOUBLE BLAZED AND SCRIBED "SE DLC 38 CS BT"  
BEARS N 41° E, 41.7 FT
- 16" B. OAK SINGLE BLAZED AND SCRIBED "NE DLC 50 CS BT"  
BEARS S 48° E, 41.6 FT
- 25" P. PINE DOUBLE BLAZED AND SCRIBED "NE DLC 50 CS BT"  
BEARS S 78° W 47.1 FT

Sketch of Monument, Accessories, and General Area

Location & Comments



Location & Comments

Comp. Declin. 17 3/4° E

Agency DLSO

Party Chief RANDALL W. SMITH

Notekeeper A. W. ...

Witnesses STEPHEN HAUSE

Address

Surveyor's Seal

REGISTERED  
PROFESSIONAL  
LAND SURVEYOR

*Randall W. Smith*  
EXPIRES 6-30-28

OREGON  
JULY 23, 1900  
RANDALL W. SMITH  
2468