

GOVERNMENT CORNER RESTORATION FORM

Date: 7/17/97 By: BC

Township 25S Range 5W Sec. 26

County DOUGLAS This survey consists of:

State OR Date 7-14-97 No. _____

Map: _____

Narrative: _____

Corner Designation

Corner Rpt: CS 64/75-25

$\frac{1}{4}$ 526
535

DOUGLAS COUNTY

Condition SURVEYOR Only

Not Found

Renewed

Unrecorded

Surveyed In

Referenced Out

Previous Renewals 1961 M21-29, 1962 DCSO, 1963 BLM

MONUMENT DETAIL

Monument(s) Found: (Condition and Source)

2 1/2" DIA. BRASS CAP ON A 1 1/2" O.D.
IRON PIPE, PROTRUSING 15" ABOVE
GROUND. 1962

COUNTY SURVEYORS OFFICE

T 25 S

$\frac{1}{4}$ 526

535

RSW

1962

Accessories Found:

BOTH BT'S FROM 1961 M21-29 NOW GONE

- 36" NOW 36" DIA 4 FT HIGH D. FIR STUMP
WITH AN UNHEALED SINGLE BLAZE SCRIBING
VISIBLE " 1/4 526 CS BT" (RECORD N 76° E 98.2 FT) 1962 DCSO
- 24" DIA 3 FT HIGH D. FIR STUMP WITH SCRIBING
VISIBLE " 1/4 526 BT" BEARS N 63° E, 56.8 FT
(AGREES WITH REC.) 1963 BLM

RENEWAL

Monument Set (Procedure and Description)

NONE

Monument Detail

ORIG 1853

~~5" FIR N20W, 46.1k
4" YONK S74 1/2 W, 37~~

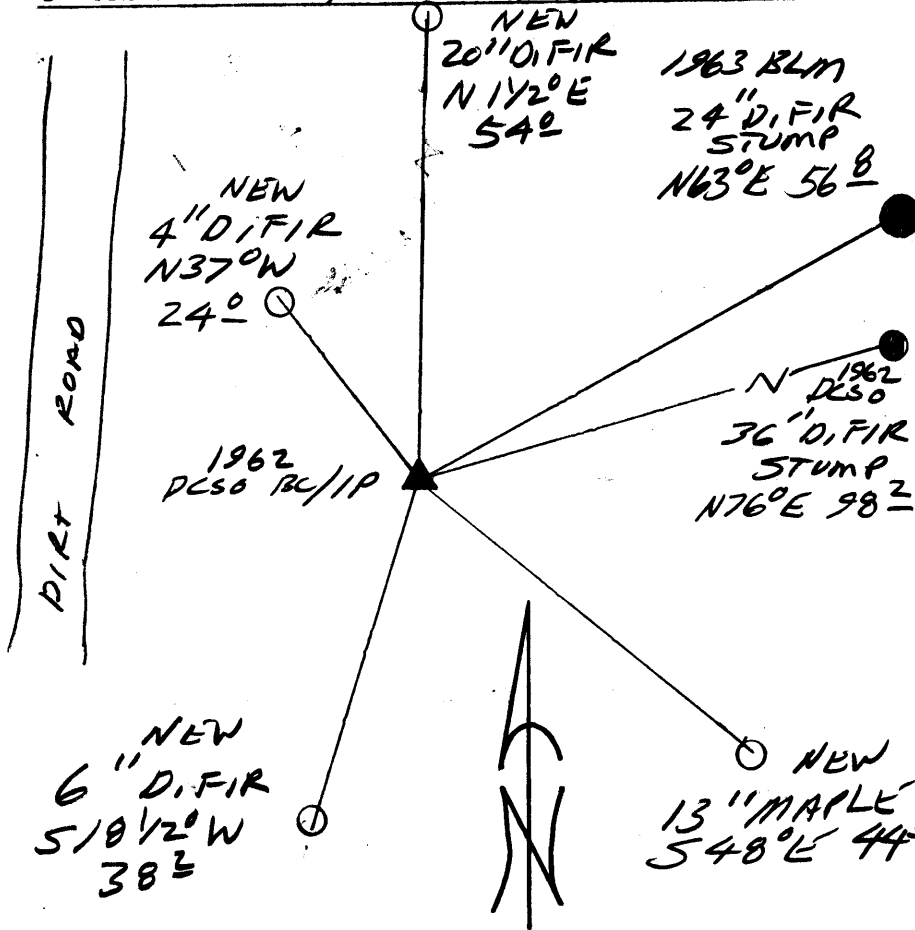
1900

~~18" FIR N35W, 40.1k
20" FIR S36E, 50.1k
NEW #1 N/A~~

New Accessories

- 4" DIA. D.FIR DOUBLE BLAZED, SCRIBED "X BT" BEARS N37°W 24.0 FT
- 13" DIA. MAPLE DOUBLE BLAZED SCRIBED "1/4 S 35 CS BT" BEARS S48°E 44.1 FT
- 20" DIA. D.FIR SINGLE BLAZED AND SCRIBED "1/4 S 26 CS BT" BEARS N1 1/2°E, 34.0 FT
- 6" DIA. D.FIR DOUBLE BLAZED AND SCRIBED "1/4 S 35 CS BT" BEARS S18 1/2°W, 38.2 FT

Sketch of Monument, Accessories, and General Area



Location & Comments

Comp. Declin. 17 3/4° E
Agency DCSO
Party Chief RANDALL W SMITH
Notekeeper
Witnesses STEPHEN J FLAKE

Address

Surveyor's Seal

REGISTERED
PROFESSIONAL
LAND SURVEYOR

Randall W. Smith
EXPIRES 6-30-98

OREGON
JULY 25, 1900
RANDALL W. SMITH
2400