

GOVERNMENT CORNER RESTORATION FORM

FILED

Township T55 Range SW Sec. 24

Date: 7/15/97 By: PC
County DOUGLAS this survey consists of:

State OR Date 7-8-97 No. _____

Map: _____

Corner Designation _____

Narrative: _____

Corner Rpt: CS 64/75-24

$\frac{1}{4} \frac{S24}{S25}$

DOUGLAS COUNTY
 Not Found
 Renewed
 Unrecorded
 Surveyed In
 Referenced Out

Previous Renewals 1960 DCSO, 1996 HOFFINE

Monument(s) Found: (Condition and Source)

2 1/2" DIA. BRASS CAP ON A
1 1/2" O.D. IRON PIPE, PROTRUDING
12" ABOVE GROUND, 1960

BC/IP IS LOOSE

COUNTY SURVEYORS OFFICE

T255 R5W

$\frac{S24}{S25}$

$\frac{1}{4}$
1960

Accessories Found:

20" NOW 24" DIA 4 FT HIGH ROTTED D. FIR STUMP
WITH A FULLY HEALED BLAZE, BEARS N 9° E, 27.2 FT
(AGREES WITH 1960 REC.) 1960

19" NOW 29" DIA, 2 FT HIGH D. FIR STUMP WITH
A FULLY HEALED BLAZE, BEARS S 39° W, 25.0 FT
(AGREES WITH 1960 REC.) 1960 (SOLID STUMP)

16" NOW 38" DIA. 2 FT HIGH OAK STUMP HAS
A ROTTED OUT CENTER AND SHOWS EVIDENCE
OF BEING PREVIOUSLY OPENED, BEARS N 59° W
65.4 FT (AGREES WITH ORIG. REC.) 0 BT

13" D. FIR WITH AN UNHEALED SINGLE
BLAZE, SCRIBING VISIBLE "1/4 S25 BT"
BEARS S 50 3/4° E, 20.1 FT (AGREES WITH REC.)
1996

✓ 640300

C.S. File No. 64/75-24

Monument Set (Procedure and Description)

Monument Detail

REFERENCE PLUMB POSITION
 OF BC/IP, REMOVED BC/IP,
 MEASURED 136 LONG SET
 BACK AT REFERENCED POSITION
 PROTRUDES 6" ABOVE GROUND.

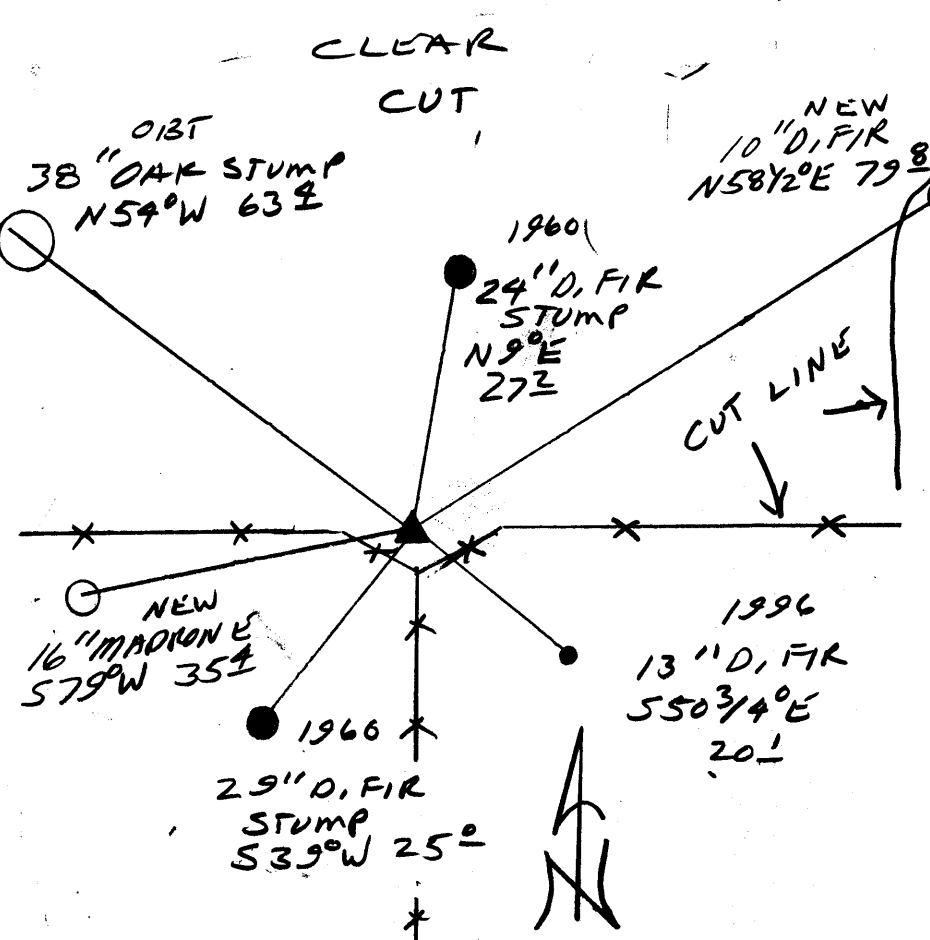
N/A

New Accessories

16" DIA. MADRONE DOUBLE BLAZED AND SCRIBED "1/4 S25"
 CS BT BEARS S79°W, 35.4 FT

10" DIA. D. FIR DOUBLE BLAZED AND SCRIBED "1/4 S24 CS BT"
 BEARS N58 1/2°E, 79.8 FT

Sketch of Monument, Accessories, and General Area



Location & Comments

CORNER LIES AT THE
 INTERSECTION OF
 E-W AND S RUNNING
 FENCE LINE

Comp. Declin. 17 3/4°E
 Agency DCSO
 Party Chief RANDALL W. SMITH
 Notekeeper Randall W. Smith
 Witnesses STEPHEN F. LAUSE

Address

Surveyor's Seal

REGISTERED
 PROFESSIONAL
 LAND SURVEYOR

Randall W. Smith
 EXPIRES 6-30-98

OREGON
 JULY 25, 1990
 RANDALL W. SMITH
 2469