

FILED

Date: 7/14/97 By: BC

This survey consists of:

Map: _____

Narrative: _____

Corner Rpt: CS 64/75-23

GOVERNMENT CORNER RESTORATION FORM

DOUGLAS COUNTY SURVEYOR

Township 25S Range 5W Sec. 20 County DOUGLAS

State OR Date 7-2-97 No. _____

Corner Designation

S20/S21
S29/S28

- _____ Condition Report Only
- _____ Not Found
- Renewed
- _____ Unrecorded
- _____ Surveyed In
- _____ Referenced Out

Previous Renewals 1920 + 1955 DCSO

Monument(s) Found: (Condition and Source)

2 1/2" DIA. BRASS CAP ON A 1 1/2" O.D. IRON PIPE, PROTRUDES 12" ABOVE GROUND. (1955)

MONUMENT DETAIL

COUNTY SURVEYORS

T25S 12SW

20 | 21
29 | 28

SEC. COR.
1955

OFFICE

Accessories Found:

BRG + DIST. TAKEN FROM 1955 BC/IP

40" NOW 40" DIA. 3 FT HIGH D. FIR STUMP, BARK IS OFF STUMP. ON REMAINING BARK SCRIBING "BT" FOUND. WE OPENED THIS STUMP 2" AND FIND SCRIBING "REW T25S S28 BT" BLAZE SHOWS EVIDENCE OF OLD AXE WORK THAT MISSED SCRIBING. THIS IS AN ORIG. BT AND RENEWAL BT TO 1920 ALSO CORNER, REESTABLISHED IN ERROR AND MONUMENTED WITH ABOVE MENTIONED BLIP IN 1955. BEARS S47°E, 66.0 FT FROM T25S BC/IP. (AGREES WITH REC.)

6" NOW 19" DIA. 1 FT HIGH D. FIR STUMP WITH A FULLY HEALED SINGLE BLAZE, BEARS N60 1/2°W, 13.5 FT (REC N69°W, 13.5 FT) 1955

7" NOW 13" DIA. D. FIR WITH A FULLY HEALED DOUBLE BLAZE, BEARS S36°W, 40.6 FT (REC S38 1/2°W, 40.6 FT) 1955

NO EVIDENCE OF ANY MORE BT'S FOUND

C.S. File No. 64/75-23

7-7-97

RENEWAL

Monument Set (Procedure and Description)

Monument Detail

1955 BRASS CAP'S STAMPING IS FILED OFF AND "VOID 1997" ADDED.

2 3/8" DIA BRASS CAP ON A 1 7/8" O.D. BY 32" LONG IRON PIPE IS SET N 34° W 24 1/2 FT FROM ORIG. 1893 D.F. FIR BEARING TREE, PROTRUDES 8" ABOVE GROUND

1955 IRON PIPE BEARS N 54° W 43.1 FT FROM NEW BC/1P.

DOUGLAS COUNTY SURVEYORS

T 25S R 5W

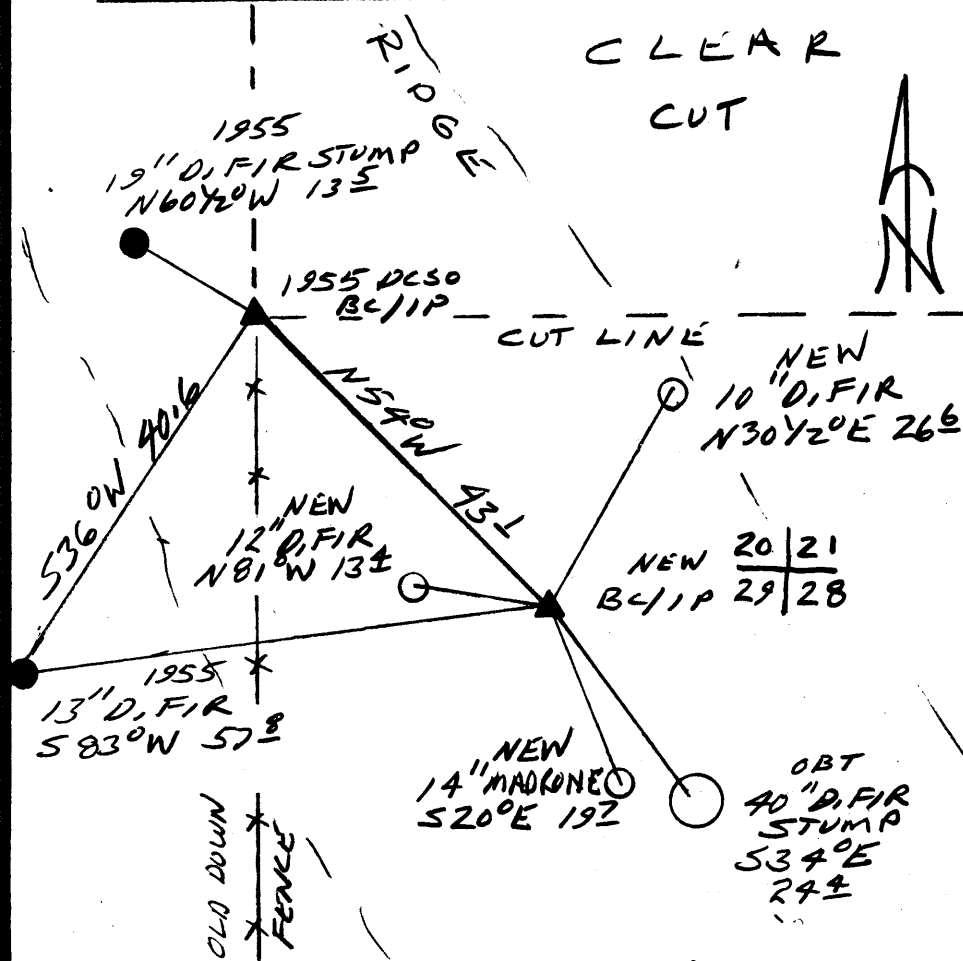
S 20 | S 21
S 29 | S 28

1997 OFFICE

New Accessories

- 12" D.F. FIR WITH A FULLY HEALED DOUBLE BLAZE BEARS S 83° W 57.8 FT. (NOTE THIS IS A 1955 ALSO RT.)
- 12" DIA. D.F. FIR DOUBLE BLAZED AND SCRIBED "T 25S R 5W S 20 CS RT" BEARS N 81° W 13.4 FT
- DOUBLE TRUNKED MADRONE DOUBLE BLAZED AND SCRIBED "T 25S R 5W S 28 CS RT" BEARS S 20° E 19.7 FT, TO CENTER OF ROOT CROWN OF WESTERLY SCRIBED 14" DIA. TRUNK
- 10" DIA. D.F. FIR DOUBLE BLAZE AND SCRIBED "T 25S R 5W S 21 CS BT" BEARS N 30 Y 2° E 26.6 FT

Sketch of Monument, Accessories, and General Area



Location & Comments 26.6 FT CORNER LIES AT THE TOP OF A N-NW'LY RUNNING RIDGE.

Comp. Declin. 17 3/4° E
Agency DCSO
Party Chief RANDALL W. SMITH
Notekeeper
Witnesses ED MCKEAN STEPHEN J. FRAUSE

Address

Surveyor's Seal

REGISTERED PROFESSIONAL LAND SURVEYOR

RANDALL W. SMITH

OREGON JULY 25, 1980

2469