

GOVERNMENT CORNER RESTORATION FORM

Date: 7/14/97 By: PC

Township 255 Range 5W Sec. 14

County DOUGLAS

This survey consists of:

State OK Date 7-1-97

No. _____

Narrative: _____

Corner Rpt: CS 64/75-21

Corner Designation _____

S15 | S14

S22 | S23

DOUGLAS COUNTY

Condition: SURVEYOR Only

Not Found

Renewed

Unrecorded

Surveyed In

Referenced Out

Previous Renewals 1960 + 1973 DCSO

Monument(s) Found: (Condition and Source)

1 1/2" BRASS CAP. ON A 1 1/2" DIA
IRON PIPE PROTRUDES 18"
ABOVE GROUND. (1973)

A LARGE STONE MEASURING
20 X 9" X 6" IS LAYING FLAT
ON TOP OF GROUND ALONG
EAST EDGE OF RC/IR.

COUNTY SURVEYORS OFFICE

T255

S15 | S14

S22 | S23

RSW
1973

Accessories Found:

12" NOW 29" DIA. D. FIR STUMP CUT LOW NO
BLAZES VISIBLE, BEARS N31°W, 63.9 FT
(AGREES WITH REC.) 1960

14" NOW 18" DIA MADRONE WITH A FULLY HEALED
BLAZE, BEARS N52°E, 40 FT (AGREES
WITH REC.) 1960

8" NOW 11" DIA. DEAD W. OAK WITH A FULLY
HEALED DOUBLE BLAZE, BEARS S86°E, 20.2 FT
(1960)

10" NOW 20" DIA. W. OAK WITH A FULLY HEALED BLAZE,
BEARS S47°W, 62.3 (REC. S47°W, 63.8 FT
DIST IS A SLOPE MEASUREMENT) 1960

Monument Set (Procedure and Description)

Monument Detail

NONE

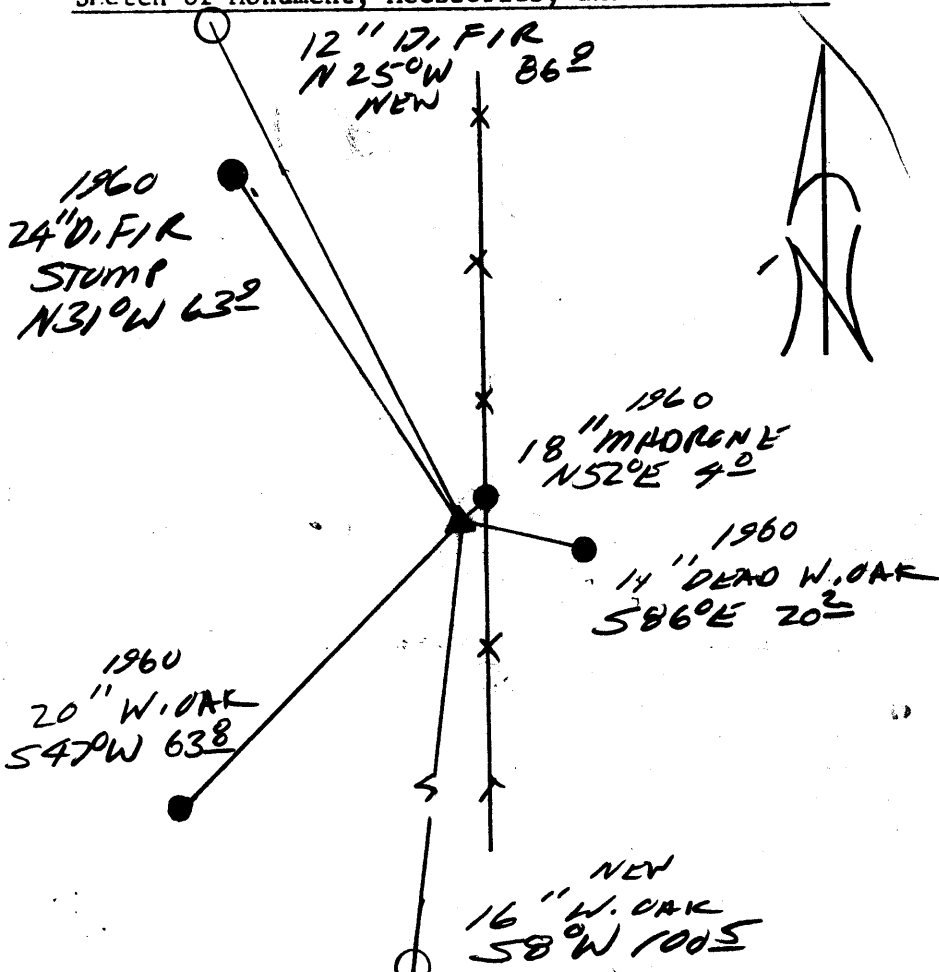
N/A

New Accessories

12" DIA. D. FIR DOUBLE BLAZED AND SCRIBED 'T255 R5W
S15 CS 137" BEARS N25°W 86.9 FT

16" DIA. W. OAK DOUBLE BLAZED AND SCRIBED "T255 R5W
S12 CS 137" BEARS S 8°W 100.5 FT

Sketch of Monument, Accessories, and General Area



Location & Comments

CORNER LIES 4'
WEST OF A N-S
FENCE LINE

Comp. Declin. 17 3/4° E
 Agency DESO
 Party Chief ED MONREAN
 Notekeeper [Signature]
 Witnesses LARRY E. SMITH

Address

Surveyor's Seal
 REGISTERED
 PROFESSIONAL
 LAND SURVEYOR

[Signature]

OREGON
 JULY 13, 1979
 LARRY E. MONREAN
 #1830

CERT. EXP. 12-31-98