

GOVERNMENT CORNER RESTORATION FORM

Date: 6/30/97 By: PC

Township 25S Range 5W Sec. 9

County DOUGLAS

This survey consists of:

State OR Date 6-26-97

No. \_\_\_\_\_

Map: \_\_\_\_\_

Narrative: \_\_\_\_\_

Corner Rpt: CS 6475-15

Corner Designation

1/4 59 | S10

DOUGLAS COUNTY

Condition RENEWED

Not Found

Renewed

Unrecorded

Surveyed In

Referenced Out

Previous Renewals 1962 BLM

Monument(s) Found: (Condition and Source)

3/4" BRASS CAP ON A 2 1/2" O.D. IRON PIPE PROTRUDING 2" ABOVE GROUND. 1962

US DEPT OF THE INTERIOR

T25S R5W

1/4

59 | S10

MONUMENT DETAIL

1962  
BLM OF LAND MANAGEMENT

Accessories Found:

14" NOW 25" DIA D. FIR WITH A FULLY HEALED SINGLE BLAZE BEARS N 90° E, 91.7 FT CAGREKS WITH REC. 1962

16" NOW 23" DIA D. FIR WITH A FULLY HEALED SINGLE BLAZE BEARS S 87° W, 80.2 FT CAGREKS WITH REC. 1962

C.S. File No. 6475-15

RENEWAL

Monument Set (Procedure and Description)

Monument Detail

NONE

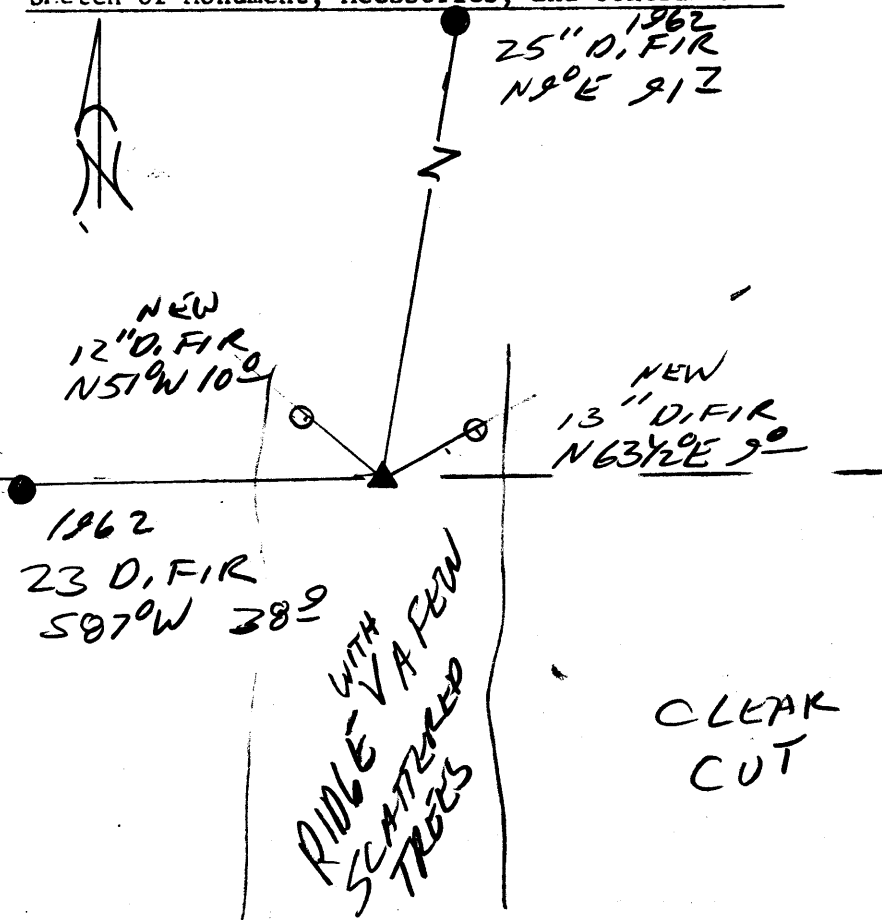
N/A

New Accessories

13" DIA D. FIR DOUBLE BLAZED AND SCRIBED "1/4 S 10 CS BT"  
BEARS N 63 1/2° E, 9.0 FT

12" DIA D. FIR DOUBLE BLAZED AND SCRIBED "1/4 S 2 CS BT"  
BEARS N 51° W, 10.0 FT

Sketch of Monument, Accessories, and General Area



Location & Comments

Comp. Declin. 17 3/4° E  
Agency DCS  
Party Chief RANDALL W. SMITH  
Notekeeper  
Witnesses STEPHEN J. FLAISE

Address

Surveyor's Seal

REGISTERED  
PROFESSIONAL  
LAND SURVEYOR

*Randall W. Smith*  
EXPIRES 6-30-98

OREGON  
JULY 25, 1990  
RANDALL W. SMITH  
2489