

GOVERNMENT CORNER RESTORATION FORM

Date: 6/30/97 By: RC

This survey consists of:

Township 25 Range 5W Sec. 4
State OR Date 6-26-97

County DOUGLAS Map: _____

Narrative: _____
Corner Rpt: CS 04/75-14

Corner Designation

$\frac{1}{4}$ $\frac{S4}{S9}$

DOUGLAS COUNTY
SURVEYOR

Condition Report Only
 Not Found
 Renewed
 Unrecorded
 Surveyed In
 Referenced Out

Previous Renewals 1962 BLM

Monument(s) Found: (Condition and Source)

3/4" BRASS CAP ON A 2 1/2" O.D.
IRON PIPE PROTRUDES 1"
ABOVE GROUND. 1962

6" DIA. CONCRETE POST
WITH 3/4" SQUARE BOLT HEAD
IS FOUND ALONG NORTH EDGE
OF BC/IP.

U.S. DEPT OF THE INTERIOR
7255 R SW

$\frac{Y4}{S4}$
S9
1962

BUR. OF LAND MANAGEMENT

Accessories Found:

6" NOW 17" DIA OAK SNAG WITH A PREVIOUSLY
OPENED UNHEALED BLAZE, NO SCRIBING VISIBLE
BEARS N 21 1/2° E, 8.1 FT (REC, N 21 1/2° E, 6.6 FT)
OBT

23" OAK (NOW 24" DIA. B.OAK (NOTED AS NOT
OF RECORD BY 1962 BLM) HAS A PARTIALLY HEALED
PREVIOUSLY OPENED BLAZE NO SCRIBING VISIBLE,
BEARS N 71° E, 20.5 FT (AGREES WITH REC.)

8" NOW 9" DIA W. OAK WITH A FULLY HEALED SINGLE
BLAZE, BEARS S 17° W, 13.9 FT (AGREES WITH REC.)
1962

C.S. File No. 04/75-14

RENEWAL

Monument Set (Procedure and Description)

Monument Detail

NONE

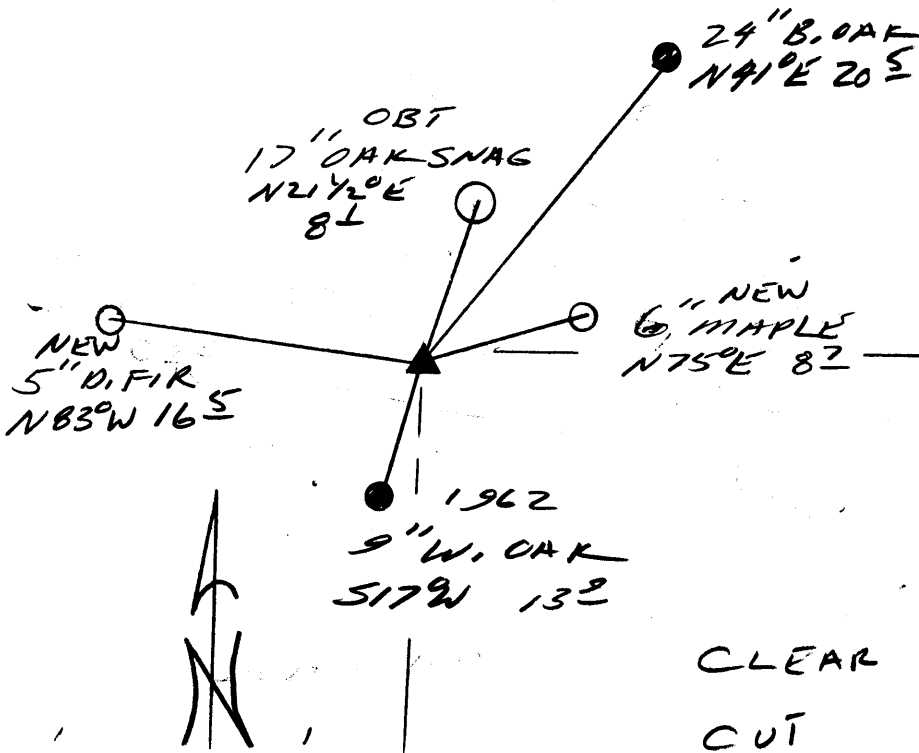
N/A

New Accessories

6" MAPLE DOUBLE BLAZED AND SCRIBED "Y454CSBT"
BEARS N 75° E, 8.7 FT

5" D. FIR DOUBLE BLAZED AND SCRIBED "Y454CSBT"
BEARS N 83° W, 16.5 FT

Sketch of Monument, Accessories, and General Area



Location & Comments

Comp. Declin. 17 3/4° E
 Agency DCS
 Party Chief RANDALL W. SMITH
 Notekeeper [Signature]
 Witnesses STEPHEN J. HASE

Address

Surveyor's Seal

REGISTERED
 PROFESSIONAL
 LAND SURVEYOR

[Signature]
 EXPIRES 6-30-98

OREGON
 JULY 25, 1990
 RANDALL W. SMITH
 2469

CLEAR
CUT