

GOVERNMENT CORNER RESTORATION FORM

Date: 6/30/97 By: BC

Township 25S Range 5W Sec. 4

County DOUGLAS

This survey consists of:

State OR Date 6-29-97

No. _____

Map: _____
Narrative: _____
Corner Apt: CS 64/75-12

Corner Designation

55 | 54

58 | 59

DOUGLAS COUNTY
SURVEYOR

- Condition Only
- Not Found
- Renewed
- Unrecorded
- Surveyed In
- Referenced Out

Previous Renewals FREAR 1917 EVANS 1950 + 1954, BLM 1963

MONUMENT DETAIL

Monument(s) Found: (Condition and Source)

2 1/2" BRASS CAP ON A 1 1/2" O.D. IRON PIPE, 2" BELOW GROUND TOP BENT, S65°W, 0.3 FT FROM PLUMB. (1954)

NOTE TOP OF RC ORIENTATED MASTERLY

T 25 S
5 | 4 RE 274
8 | 9
R 5 W

Accessories Found:

- 30" NOW 36" DIA ELM WITH A PARTIALLY HEALED SINGLE BLAZE SCRIBING VISIBLE" R5WS" BEARS S63°20'E, 320.8 FT (AGREES WITH 1963 BLM REC.) 1950 EVANS
- 3/4" BLM BRASS CAP ON A 2 1/2" O.D. IRON PIPE PROTRUDES 5" ABOVE GROUND " T 25S R5W S4 RM 1962" BEARS N37°50'E, 89.1 FT (AGREES WITH REC.) 1963 BLM
- 3/4" BLM BRASS CAP ON A 2 1/2" O.D. IRON PIPE PROTRUDES 2" ABOVE GROUND " T 25S R5W S9 RM 1962" BEARS S89°05'E 169.3 FT (AGREES WITH REC.) 1963 BLM
- 1/2" I.P. 6" BELOW GROUND BEARS N66°E, 227.2 FT (AGREES WITH REC.) NOTED AS BEING INITIAL POINT IN 1950 EVANS RENEWAL

C.S. File No. 64/75-12

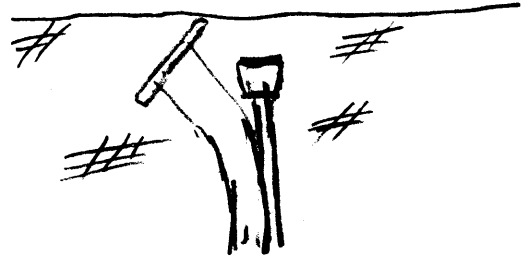
RENEWAL

Monument Set (Procedure and Description)

SET A 5/8" BY 30" LONG IRON ROD WITH DCSD ALUMINUM CAP STAMPED "1987" AT PLUMB POSITION OF BC/IP, 5" BELOW GROUND

NOTE FOUND BC/IP HAS A CONCRETE FOOTING. SET I.R. IS ALONG EASTERLY EDGE OF BC/IP

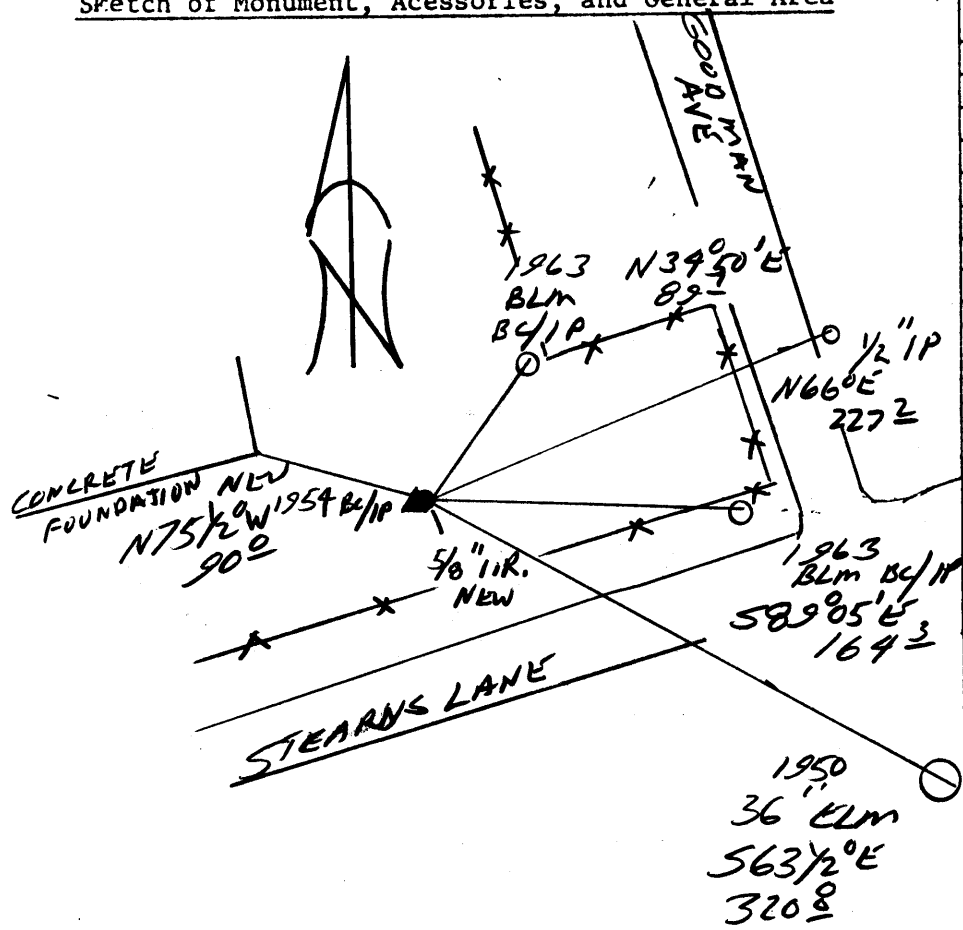
Monument Detail



New Accessories

SE CORNER OF NEW CONCRETE FOOTING BEARS N75 1/2° W 90.0 FT

Sketch of Monument, Accessories, and General Area



Location & Comments

Comp. Declin. 17 3/4° E
Agency DCSD
Party Chief RANDALL W. SMITH
Notekeeper [Signature]
Witnesses STEPHEN J. FLAVSKY

Address

Surveyor's Seal

REGISTERED PROFESSIONAL LAND SURVEYOR

[Signature] EXPIRES 6-30-98

OREGON JULY 25, 1990 RANDALL W. SMITH 2469