

GOVERNMENT CORNER RESTORATION FORM

Date: 6/30/97 By: EC

Township 25 Range 5W Sec. 7

County DOUGLAS

This survey consists of:

State OR Date 6-23-97

No. _____

Narrative: _____
Corner Rpt: CS 6475-11

Corner Designation

$\frac{1}{4}$ S7 | S8

DOUGLAS COUNTY
SURVEYOR

- Condition RENEWED Only
- Not Found
- Renewed
- Unrecorded
- Surveyed In
- Referenced Out

Previous Renewals 1919 + 1960 DCSO PT # 200540

Monument(s) Found: (Condition and Source)

1 1/2" O.D. IRON PIPE PROTRUDING
6" ABOVE GROUND POINTS WESTERLY
6" FROM PLUMB. (1919)

N/A

Accessories Found:

36" NOW 46" DIA 9' HIGH TIPPED OUT OF GROUND
D. FIR STUMP WITH A PREVIOUSLY OPENED HEALED
BLAZE AND BARK SCRIBING AND "S8" VISIBLE
LARGE ROOT HOLE NEAR RECORD BEARING
" N29°E, 13.9 FT" DIST

ORIG. SW BT NOT FOUND

SE BT FROM 1919 RENEWAL NOT FOUND

11" NOW 24" DIA. 1 FT HIGH D. FIR STUMP
WITH A FULLY HEALED LOWER BLAZE; BEARS
S82°W, 44.3 FT 1960

RENEWAL

Monument Set (Procedure and Description)

2 3/8" DIA BRASS CAP ON A
1 3/8" O.D BY 32" LONG IRON
PIPE IS SET AT PLUMB
POSITION OF FOUND IRON PIPE.
PROTRUDS 6" ABOVE GROUND.
FOUND I.P. MEASURES 33 1/2"
LONG IS SET ALONG NORTH
EDGE OF BC/IP PROTRUDS
4" ABOVE GROUND

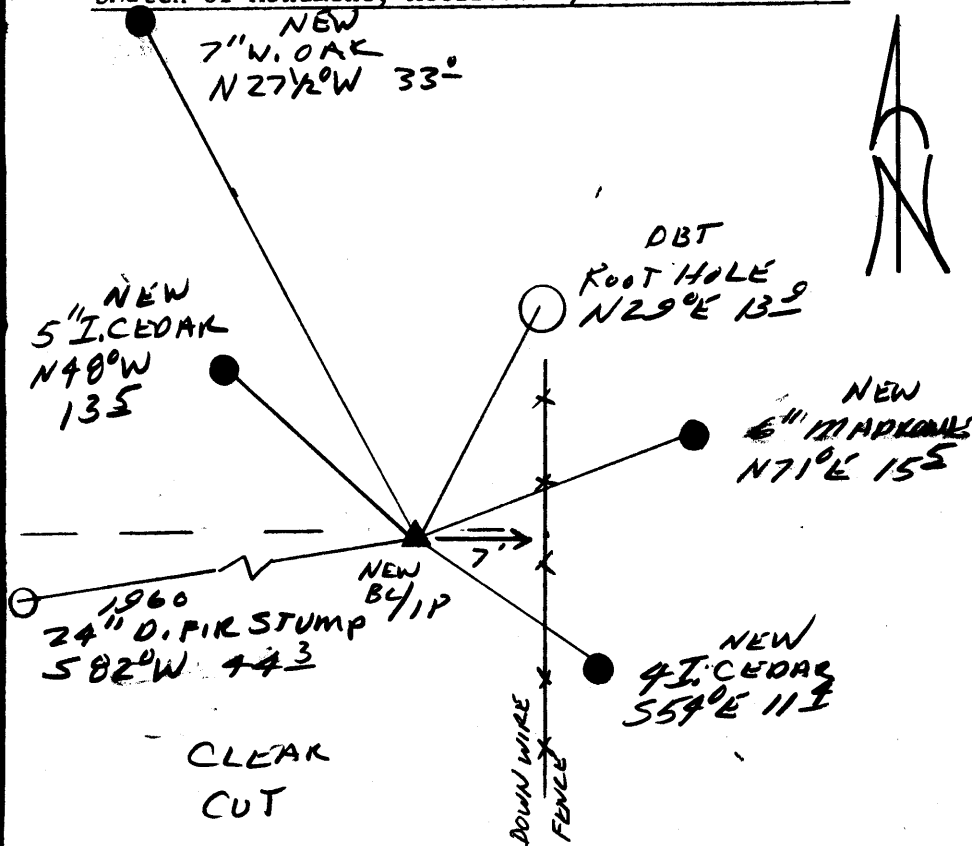
Monument Detail

DOUGLAS COUNTY SURVEYORS OFFICE
T25S R5W
1/4
S7|S8
1997

New Accessories

- 7" W. OAK DOUBLE BLAZED AND SCRIBED "1/4S7CS BT" BEARS N27 1/2° W 33.0 FT
- 5" I. CEDAR DOUBLE BLAZED AND SCRIBED "1/4S7CS BT" BEARS N40° W 13.5 FT
- 4" I. CEDAR DOUBLE BLAZED AND SCRIBED "1/4S8CS BT" BEARS S54° E 11.4 FT
- 6" MADRONE SINGLE BLAZED AND SCRIBED "1/4S8CS BT" BEARS N71° E 15.5 FT TO BASE OF SCRIBED TRUNK.
- 8" NAIL THROUGH A 2" DIA WASHER AND BT TAG IS SET IN TOP OF 24" DIA D.FIR STUMP FROM 1960 RENEWAL (S82° W 44.3 FT)

Sketch of Monument, Accessories, and General Area



Location & Comments

CORNER LIES AT THE
NE CORNER OF A
CLEAR CUT. CORNER
LIES 7 FT WEST OF
A DOWN N-S RUNNING
FENCE LINE

Comp. Declin. 173/4° E
Agency DCSD
Party Chief RANDALL W SMITH
Notekeeper [Signature]
Witnesses STEPHEN J FLAUSC

Address

Surveyor's Seal

REGISTERED
PROFESSIONAL
LAND SURVEYOR

[Signature]
EXPIRES 6-30-98

OREGON
JULY 25, 1990
RANDALL W. SMITH
2489