

Township 235 Range 5W Sec. 28 County DOUGLAS FILED

State OR Date 6-2-97 No. _____ Date: 6/5/97 By: BC

This survey consists of:

Corner Designation

1/4 529/528

Condition Report Only

No. Found: CS 64/75-4

- Renewed
- Unrecorded
- Surveyed BY SURVEYOR
- Referenced Out

Previous Renewals 1960 DCSD

Monument(s) Found: (Condition and Source)

2 1/2" DIA BRASS CAP ON A
1 1/2" O.D. IRON PIPE, PROTRUDES
20" ABOVE GROUND (1960)

COUNTY SURVEYORS OFFICE
 T235 R5W
 1/4 529/528
 1960

Accessories Found:

14" NOW 46" DIA. W. OAK WITH A PREVIOUSLY
OPENED BLAZE, NO SCRIBING VISIBLE, RE-SCRIBING
IN 1960 MAY BE ROTTED. BEARS N30°W
28.5 FT (REC. N30°W, 27.1 FT DIST IS A FACE
MEASUREMENT) OBT.

8" NOW 12" DIA. W. OAK WITH A HEALD BLAZE,
BEARS S82°20'E, 15.70 FT (AGREES WITH REC.)
1960

C.S. File No. 64/75-4

Monument Set (Procedure and Description)

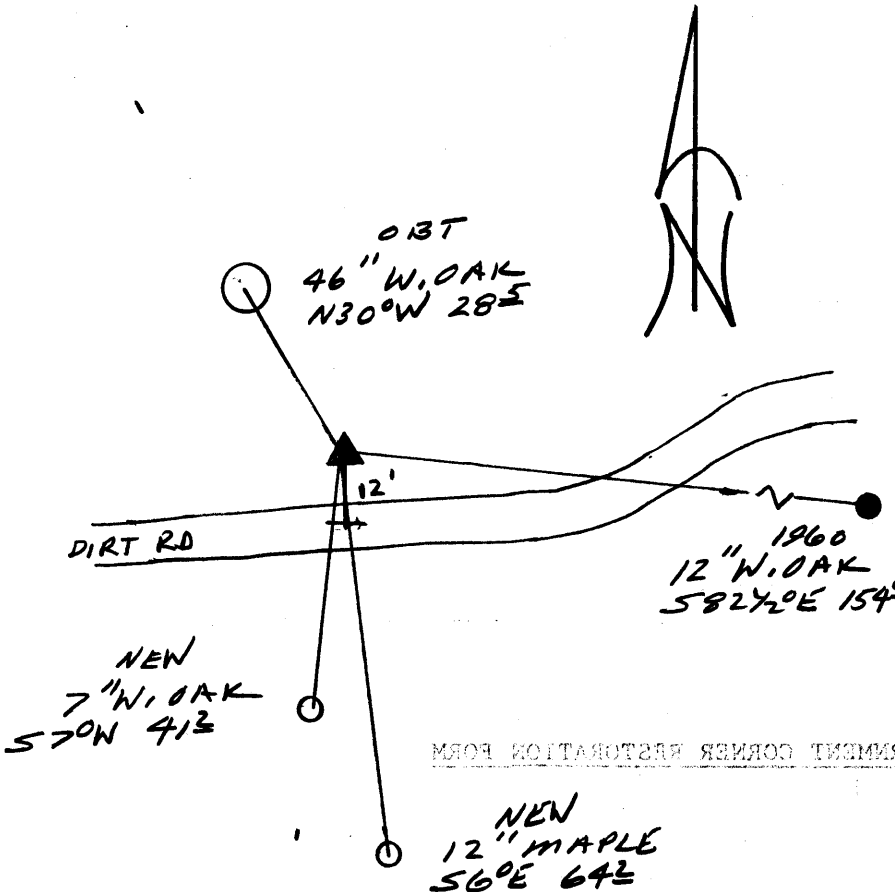
POSITION OF 1960 BC/IP IS
 REFERENCED AND REMOVED
 BC/IP MEASURES 36" LONG.
 BC/IP IS SET AT REFERENCED
 POSITION NOW PROTRUDES 7"
 ABOVE GROUND.

N/A

New Accessories

7" DIA. W. OAK DOUBLE BLAZED AND SCRIBED "1/4 S29CS BT"
 BEARS S70W, 41.2 FT
 12" DIA. MAPLE DOUBLE BLAZED AND SCRIBED "1/4 S29CS BT"
 BEARS S60E, 64.2 FT

Sketch of Monument, Accessories, and General Area



Location & Comments

CORNER LIES 12'
 NORTH OF A DIRT
 FIELD ACCESS ROAD

Comp. Declin. 17 3/4° E
 Agency OLSO
 Party Chief RANDALL W. SMITH
 Notekeeper
 Witnesses STEPHEN J. FLAUSCH

Address

Surveyor's Seal

REGISTERED
 PROFESSIONAL
 LAND SURVEYOR

Randall W. Smith
 EXPIRES 6-30-98

OREGON
 JULY 25, 1990
 RANDALL W. SMITH
 2489