

GOVERNMENT CORNER RESTORATION FORM

Date: 6/5/97 By: BC

Township 24S Range 5W Sec. 30 County DOUGLAS This survey consists of:

State OK Date 5-22-97 No. _____

Corner Designation _____

County File No. CS 64/75-1

525	530
536	531

DOUGLAS COUNTY SURVEYOR

Condition of Record

Not Found _____

Renewed

Unrecorded _____

Surveyed In _____

Referenced Out _____

Previous Renewals 1959 DCSO

Monument(s) Found: (Condition and Source)

2 1/2" DIA BRASS CAPON A 1 1/2"
O.D. IRON PIPE, PROTRUDES 10"
ABOVE GROUND (1959)

COUNTY SURVEYORS OFFICE

T 24S

R	525/530	R
6		5
W	536/531	W

1959

Accessories Found:

16" NOW 26" DIA. 4' HIGH B. OAK STUMP WITH A PREVIOUSLY
OPENED BLAZE SCRIBING VISIBLE "TS" BEARS SOUTH
53.5 FT (AGREES WITH REC.) OBT

40" NOW 36" DIA BOILED TO GROUND OAK STUMP AGREES
WITH REC. "56° E 42.2 FT" OBT

NO OTHER OBT'S FOUND

20" NOW 24" DIA 3 FT HIGH D. FIR STUMP WITH
SCRIBING FOUND "BT" BEARS S65°W 37.0 FT
TO ROOT CROWN (AGREES WITH REC) 1959

20" W. OAK NOW ROOT HOLE BEARS N2°W, 53.8 FT
(AGREES WITH REC.) 1959

10" NOW 10" DIA. W. OAK WITH A FULLY HEALED
BLAZE BEARS S31°E, 9.0 FT (AGREES WITH REC)
1959

MONUMENT DETAIL

Monument Set (Procedure and Description)

Monument Detail

NONE

N/A

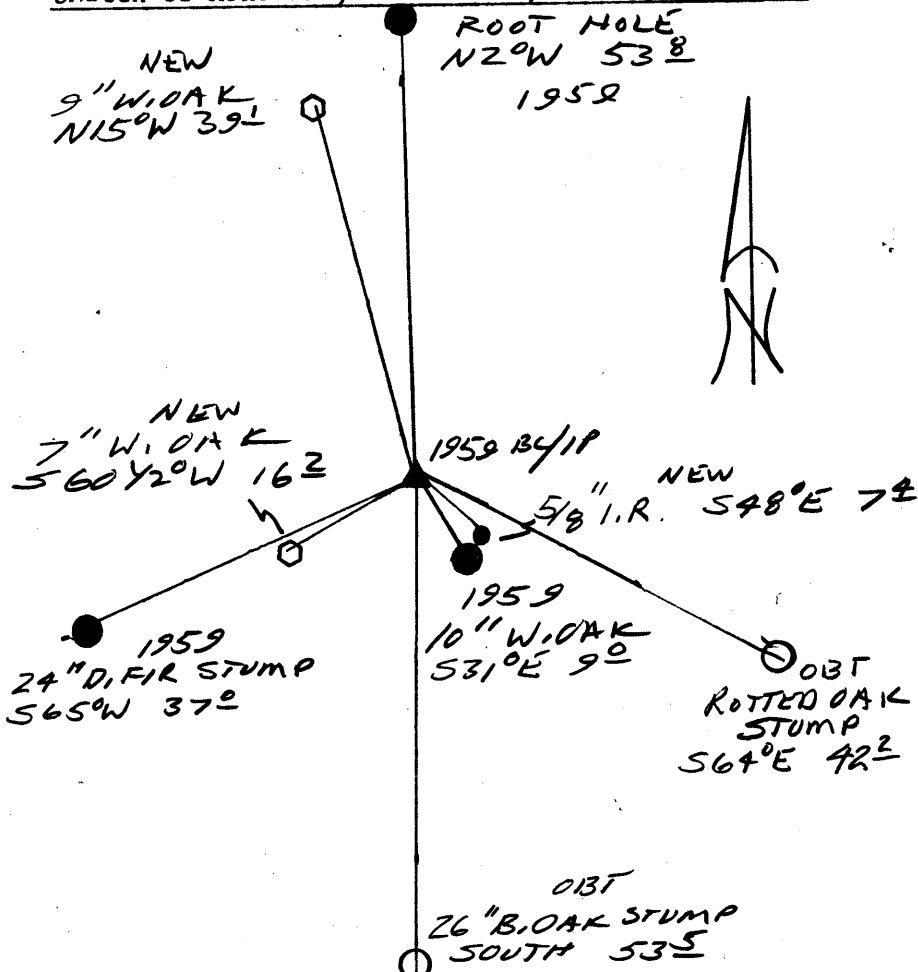
New Accessories

5/8" I.R. PROTRUDERS 5" ABOVE GROUND, BEARS S48°E, 7.4 FT

7" DIA. W. OAK DOUBLE BLAZED AND SCRIBED "T24S R6W S36CS BT" BEARS S60Y2°W, 16.2 FT

9" DIA. W. OAK DOUBLE BLAZED AND SCRIBED "T24S R6W S25CS BT" BEARS N15°W, 39.1 FT

Sketch of Monument, Accessories, and General Area



Location & Comments

CORNER BEARS N35°W 60 FROM FENCE CORNER RUNNING E-W-S

Comp. Declin. 17 1/2° E
Agency DCS
Party Chief RANDALL W SMITH
Notekeeper
Witnesses STEPHEN J HANSEN

Address

Surveyor's Seal

REGISTERED PROFESSIONAL LAND SURVEYOR

Randall W. Smith

EXPIRE 6-30-98

OREGON JULY 25, 1990
RANDALL W. SMITH
2469