

GOVERNMENT CORNER RESTORATION FORM

FILED

Date: 5-13-1997 By: BC

Township 26S Range 7W Sec. 24

County DOUGLAS This survey consists of:

State OR

Date 5-8-97

No. _____

Map: _____

Narrative: _____

Corner Designation

Corner Rpt: CS 64/74-29

SW COR
DLC 46

- Condition of Record
- Not Found
- Renewed
- Unrecorded
- Surveyed In
- Referenced Out

MONUMENT DETAIL

Previous Renewals 1960 DCSO PI# 046030

Monument(s) Found: (Condition and Source)

2 1/2" DIA BRASS CAP ON A
1 1/2" O.D. IRON PIPE PROTRUDS
13" ABOVE GROUND. BENT
AND LEANING NW'ly OF
PLUMB. (1960)

COUNTY SURVEYORS OFFICE

T26S
S.W.
COR.
DLC 46
R 7W
1960

Accessories Found:

16" NAW 50" DIA B. OAK WITH A PREVIOUSLY OPENED
UNHEALED BLAZE, NO SCRIBING VISIBLE, BEARS
N 43° E, 196.6 FT (REC N 45° E, 196.0 FT) 1960

5" NAW 13" DIA. W. OAK WITH A FULLY HEALED BLAZE,
BEARS N 43° E, 27.5 FT (REC N 45° E, 27.5 FT) 1960

12" NAW 19" DIA. W. OAK WITH A FULLY HEALED SINGLE
BLAZE, BEARS N 9° E, 54.8 FT (REC, N 11° E, 54.8 FT) 1960

Monument Set (Procedure and Description)

BC/IP IS STRAIGHTENED AND RETURNED TO PLUMB POSITION, SET 6" BELOW GROUND.

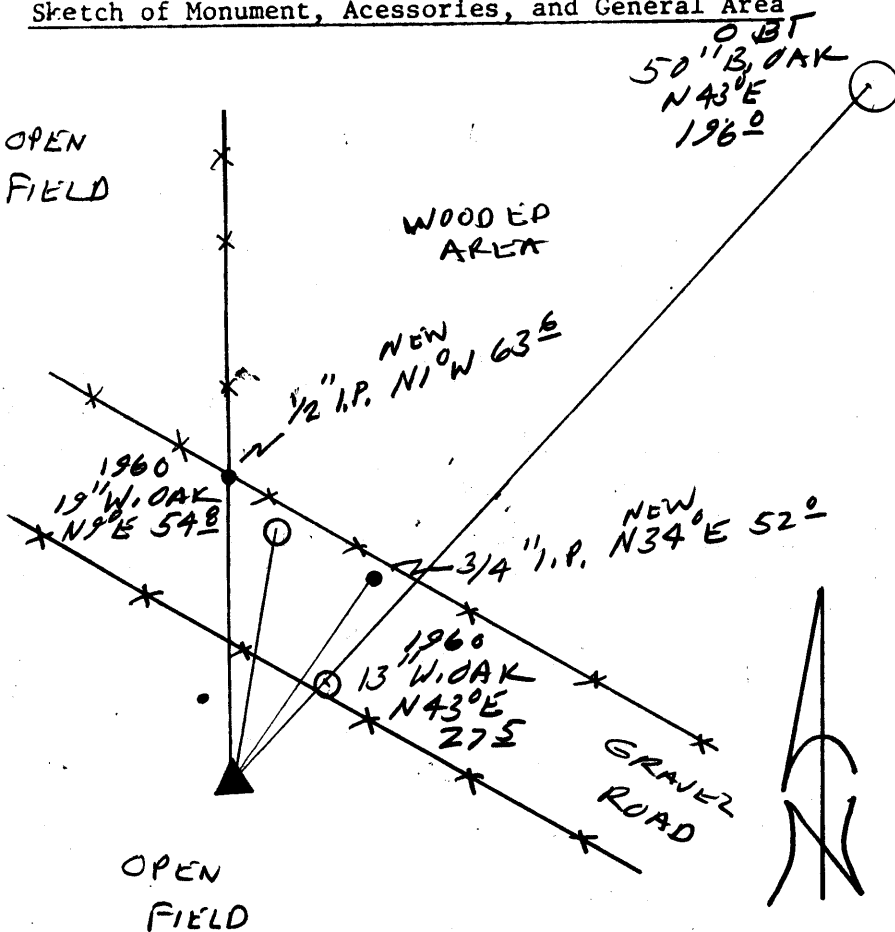
N/A

New Accessories

1/2" I.D. IRON PIPE PROTRUDES 2" ABOVE GROUND BEARS N10W, 63.6 FT

3/4" I.D. IRON PIPE PROTRUDES 8" ABOVE GROUND BEARS N34E, 52.0 FT

Sketch of Monument, Accessories, and General Area



Location & Comments

Comp. Declin. 17 3/4° E
 Agency DCSO
 Party Chief RANDALL W SMITH
 Notekeeper Randall W Smith
 Witnesses STEPHEN J FLAISE

Address

Surveyor's Seal

REGISTERED PROFESSIONAL LAND SURVEYOR

Randall W Smith
 LICENSE 6-30-78

OREGON
 JULY 25, 1960
 RANDALL W. SMITH
 2469