

Monument Set (Procedure and Description)

Monument Detail

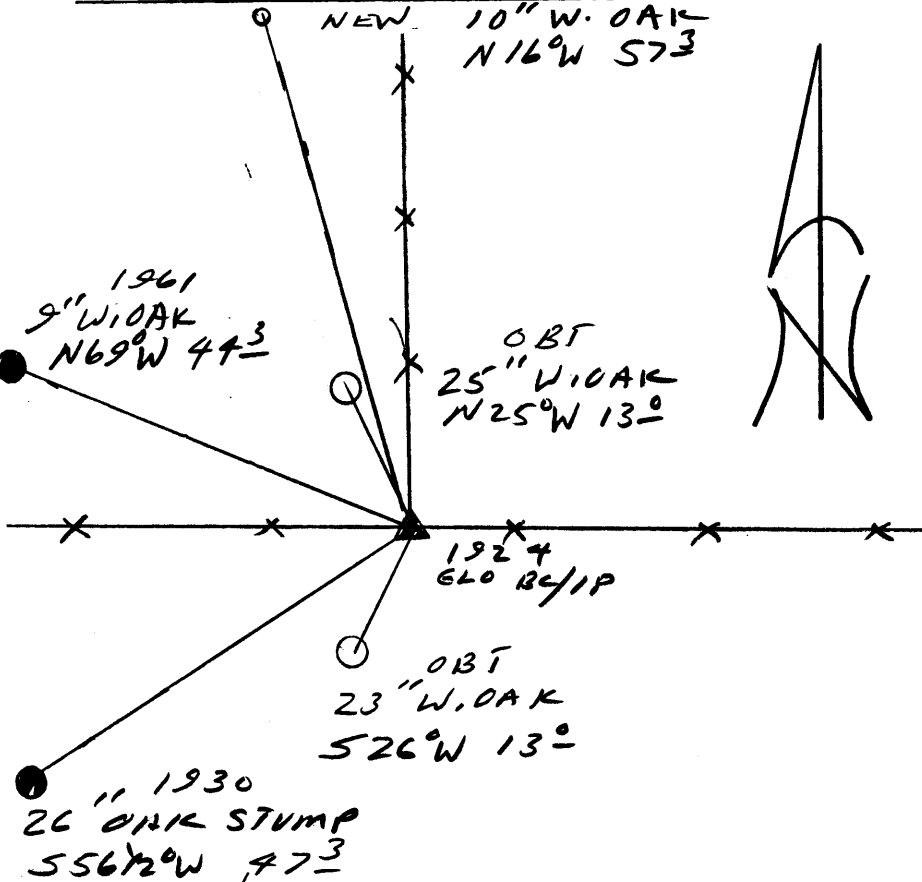
NONE

N/A

New Accessories

10" DIA. W. OAK DOUBLE BLAZED AND SCRIBED "145.31 CS BT"
BEARS N16°W, 57.3 FT

Sketch of Monument, Accessories, and General Area



Location & Comments

CORNER LIES AT THE INTERSECTION OF AN EAST WEST AND NORTH RUNNING FENCE CORNER

Comp. Declin. 17° 39' 24"
Agency DCSO
Party Chief RANDALL W. SMITH
Notekeeper [Signature]
Witnesses STEPHAN J. FLEUSE

Address

Surveyor's Seal

REGISTERED PROFESSIONAL LAND SURVEYOR

[Signature] EXPIRES 6-30-90

OREGON JULY 25, 1990 RANDALL W. SMITH 2469