

GOVERNMENT CORNER RESTORATION FORM

FILED

Date: 5/12/1997 By: PC

Township 27S Range 7W Sec. 31 County DOUGLAS This survey consists of:

State OR Date 4-30-97 No. Narrative:

Corner Designation

1/4 S 36 | S 31

Corner Spt: CS 6474-23

- Condition See Remarks Only
- Not Found
- Renewed
- Unrecorded
- Surveyed In
- Referenced Out

DOUGLAS COUNTY SURVEYOR

PI # 100140

Previous Renewals 1930 + 1958 DCSO

Monument(s) Found: (Condition and Source)

2 1/2" DIA. BRASS CAP ON A
 1 1/2" O.D. IRON PIPE PROTRUDES
 14" ABOVE GROUND LEANING 1 FT
 NORTHERLY (1958 DCSO)

1/2" DIA. 13 1/8" LONG BOLT
 WITH A 1 1/4" SQUARE HEAD
 IS FOUND STUCK IN TOP OF
 FENCE CORNER POST. (1930 DCSO)

COUNTY SURVEYORS OFFICE
 T 27 S
 R 7 W
 1/4 S 36 | S 31
 1958

Accessories Found:

15" NOW 20" DIA W. OAK WITH A PARTIALLY HEALED
 PREVIOUSLY OPENED BLAZE, NO SCRIBING VISIBLE,
 BEARS S 10 1/2° E, 101.0 FT (REC S 10 1/2° E,
 99.7 FT) OBT

12" NOW 19" DIA. W. OAK WITH A PREVIOUSLY OPENED
 HEALED BLAZE, BEARS S 23° W, 99.0 FT (CAGREES
 WITH REC.) OBT

10" NOW 22" DIA. D. FIR WITH A FULLY HEALED
 SINGLE BLAZE, BEARS N 35° W, 127.0 FT
 (CAGREES WITH REC.) 1930 DCSO

12" NOW 12" DIA DOWN AND ROTTEN D. FIR, SCRIBING
 VISIBLE "RT" LARGE ROOT HOLE AGREES WITH
 REC. "S 67° E, 26.2 FT" 1930 DCSO

9" NOW 16" DIA. CEDAR WITH A FULLY HEALED DOUBLE
 BLAZE, BEARS N 66° E, 39.8 FT (CAGREES WITH REC.)
 1958 / DCSO

RENEWAL

Monument Set (Procedure and Description)

Monument Detail

DCSO BC/IP RETURNED TO
PLUMP POSITION, PRETRUDES 6"
ABOVE GROUND!

N/A

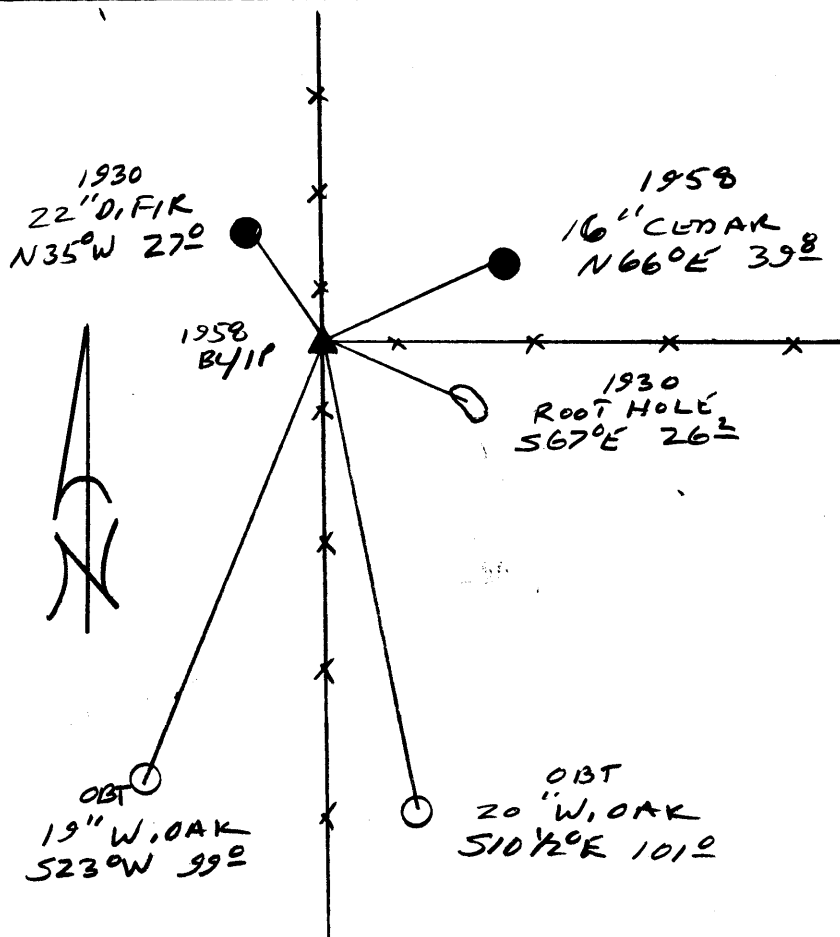
New Accessories

NONE

Sketch of Monument, Accessories, and General Area

Location & Comments

CORNER LIES AT THE
INTERSECTION OF A N-S
AND EAST RUNNING
FENCE LINES



Comp. Declin. 17 3/4' E
 Agency DCSO
 Party Chief RANDALL W SMITH
 Notekeeper [Signature]
 Witnesses STEPHEN J FLANSE

Address

Surveyor's Seal

REGISTERED
PROFESSIONAL
LAND SURVEYOR

[Signature]
EXPIRES 6-30-78

OREGON
JULY 25, 1960
RANDALL W SMITH
2469