



RENEWAL

Monument Set (Procedure and Description)

Monument Detail

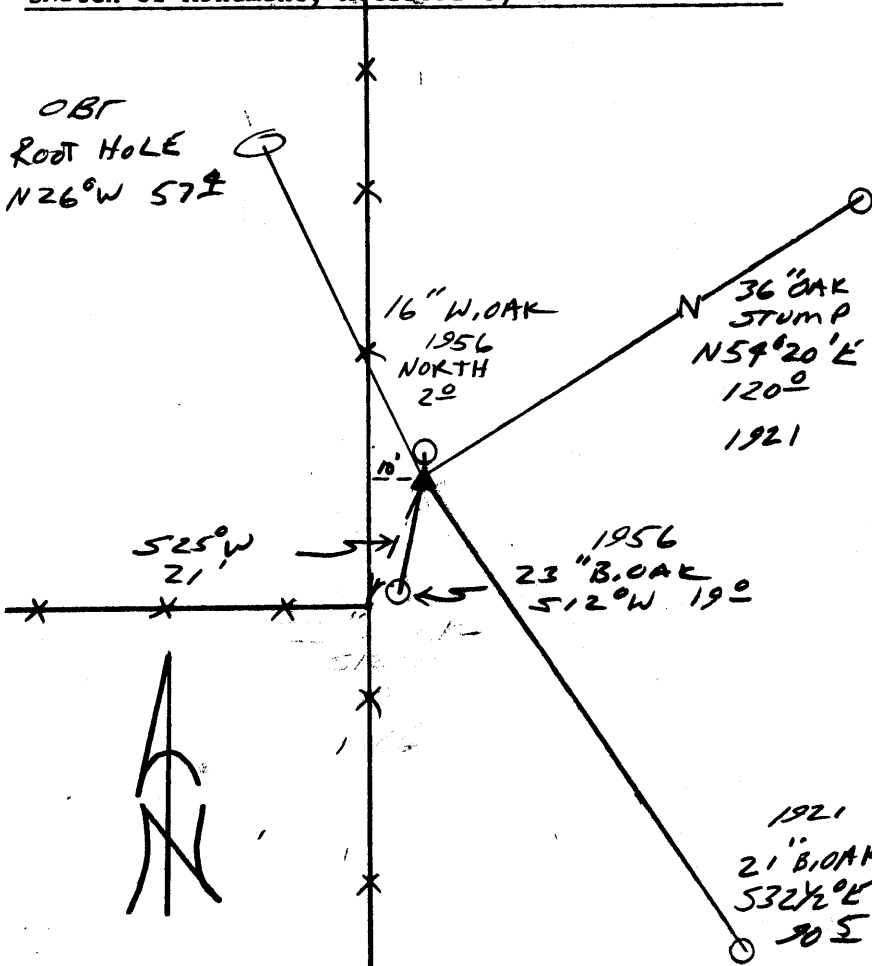
NONE

N/A

New Accessories

NONE

Sketch of Monument, Accessories, and General Area



Location & Comments

CORNER LHS 10'  
EAST OF A N-S FLINE

Comp. Declin. 17 3/4° E  
 Agency DCSO  
 Party Chief RANDALL W. SMITH  
 Notekeeper [Signature]  
 Witnesses STEPHEN FLANK

Address

Surveyor's Seal

REGISTERED  
 PROFESSIONAL  
 LAND SURVEYOR

[Signature]  
 EXPIRES 6/30/98

OREGON  
 JULY 25, 1990  
 RANDALL W. SMITH  
 2489