

RENEWAL

Monument Set (Procedure and Description)

2 3/8" DIA BRASS CAPON A 1 3/8"
 O.D. IRON PIPE IS SET AT
 REFERENCED POSITION OF FOUND
 1/2" I.P. B.C.I.P. PROTRUDES
 5" ABOVE GROUND. I.P. MEASURED
 42 1/2" LONG.
 1/2" I.P. IS SET ALONG SOUTH
 EDGE OF B.C.I.P. PROTRUDES
 3" ABOVE GROUND.

Monument Detail

DOUGLAS COUNTY SURVEYORS
 T 263

R 1/4 R
 7 S25/S30 6
 W W

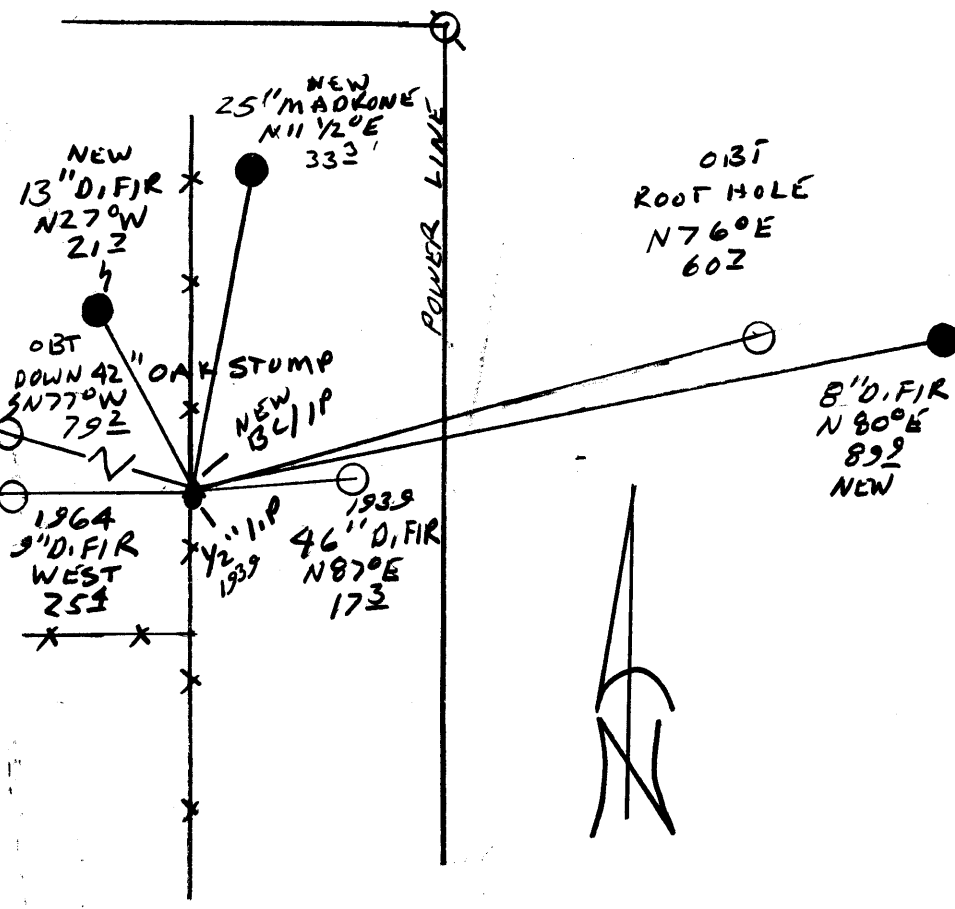
1997
 OFFICE

New Accessories

25" DIA MAHOGANY DOUBLE BLAZED AND SCRIBED "1/4 S30 CS BT"
 BEARS N 11 1/2° E, 33.3 FT

8" DIA D. FIR DOUBLE BLAZED AND SCRIBED "1/4 S30 CS BT"
 BEARS N 80° E, 89.9 FT

13" DIA. D. FIR DOUBLE BLAZED AND SCRIBED "1/4 S25 CS BT"
 BEARS N 27° W, 21.7 FT
 Sketch of Monument, Accessories, and General Area



Location & Comments

CORNER LIES IN AN
 OLD MOSTLY DOWN N-S
 FENCE LINE A 3 WAY
 FC CORNER WITH A
 FENCE RUNNING WEST
 IS SOUTH 15' FROM
 CORNER. A POWER LINE
 FORMER WITH LINES RUNNING
 SOUTH AND WEST BRS N30°E, 80'

Comp. Declin. 17 3/4° E
 Agency PCSO
 Party Chief RANDALL W. SMITH
 Notekeeper *[Signature]*
 Witnesses STEPHEN J. FRAVIE

Address

Surveyor's Seal

REGISTERED
 PROFESSIONAL
 LAND SURVEYOR

[Signature]
 6-30-98

OREGON
 JULY 25, 1990
 RANDALL W. SMITH
 2469