

Monument Set (Procedure and Description)

Monument Detail

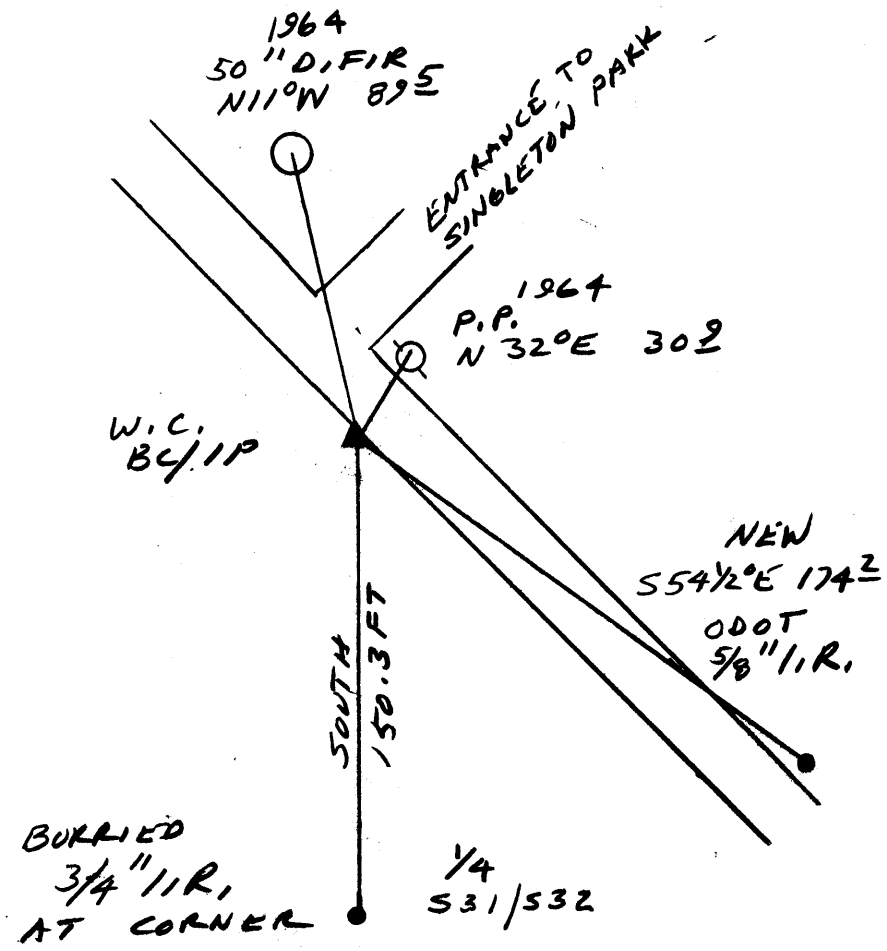
BC/IP W.C. RETURNED
 TO PLUMB POSITION IS
 FLUSH WITH ROAD SHOULDER

N/A

New Accessories

5/8" I.R. WITH ALUM CAP "000T 9 HORIZ CONTROL"
 BEARS S 54 1/2° E, 174.2 FT

Sketch of Monument, Accessories, and General Area



Location & Comments

BC/IP W.C. IS SOUTH
 35 FT FROM ENTRANCE
 TO SINGLETON PARK

Comp. Declin. 17 3/4° E
 Agency DCSO
 Party Chief RANDALL W SMITH
 Notekeeper [Signature]
 Witnesses STEPHEN J FLAUSK

Address

Surveyor's Seal

REGISTERED
 PROFESSIONAL
 LAND SURVEYOR

[Signature]
 EXPIRES 6-30-98

OREGON
 JULY 25, 1990
 RANDALL W. SMITH
 2480