

GOVERNMENT CORNER RESTORATION FORM

Date: 4/21/1997 By: PR
This survey consists of:

Township 31S Range 5W Sec. 6 County DOUGLAS Map: _____
State OR Date 2-25-97 No. _____
Narrative: _____
Corner Rpt: CS 64/74-8

Corner Designation

* LT
S1 | S6

DOUGLAS COUNTY
SURVEYOR

Condition Report Only

- Not Found
- Renewed
- Unrecorded
- Surveyed In
- Referenced Out

Previous Renewals 1979 DCSO RM 3-26

Monument(s) Found: (Condition and Source)

~~ORIG. 1855 36" DIA. D. FIR AND
4' DIA. D. FIR FOUND BY DCSO
IN 1979. WE ARE UNABLE
TO SUBSTANTIATE THIS LINE
TREE (TREES).~~

N/A

Accessories Found:

FROM THE ORIG 1855 1/4 SECTION CORNER BETWEEN
SECTIONS 1 & 6 WE TIED TWO TREES. BEARINGS
ARE BASED ON COMPASS BEARINGS. "ORIGINAL
LINE NOTES FROM 1855 NOTE THE LINE TREE AS
BEING AT A CHANGE OF SLOPE IN TERRAIN

APPROX. 4' DIA. BROKEN AND ROTTED STUMP BEARS
N 072° W 462 FT (NO MARKS FOUND) FROM
1855 CORNER TREE

APPROX. 4' DIA. DEAD AND BURNT D. FIR (NO MARKS
VISIBLE) IS FOUND AT A BREAK IN SLOPE OF
TERRAIN. BEARS N 1° W 439 FT FROM
1855 CORNER TREE:

(RECORD PER RM 3-26 IS N 0° 35' 38" W 461.34 FT
RECORD PER ORIG. 1855 IS NORTH 429

Monument Set (Procedure and Description)

Monument Detail

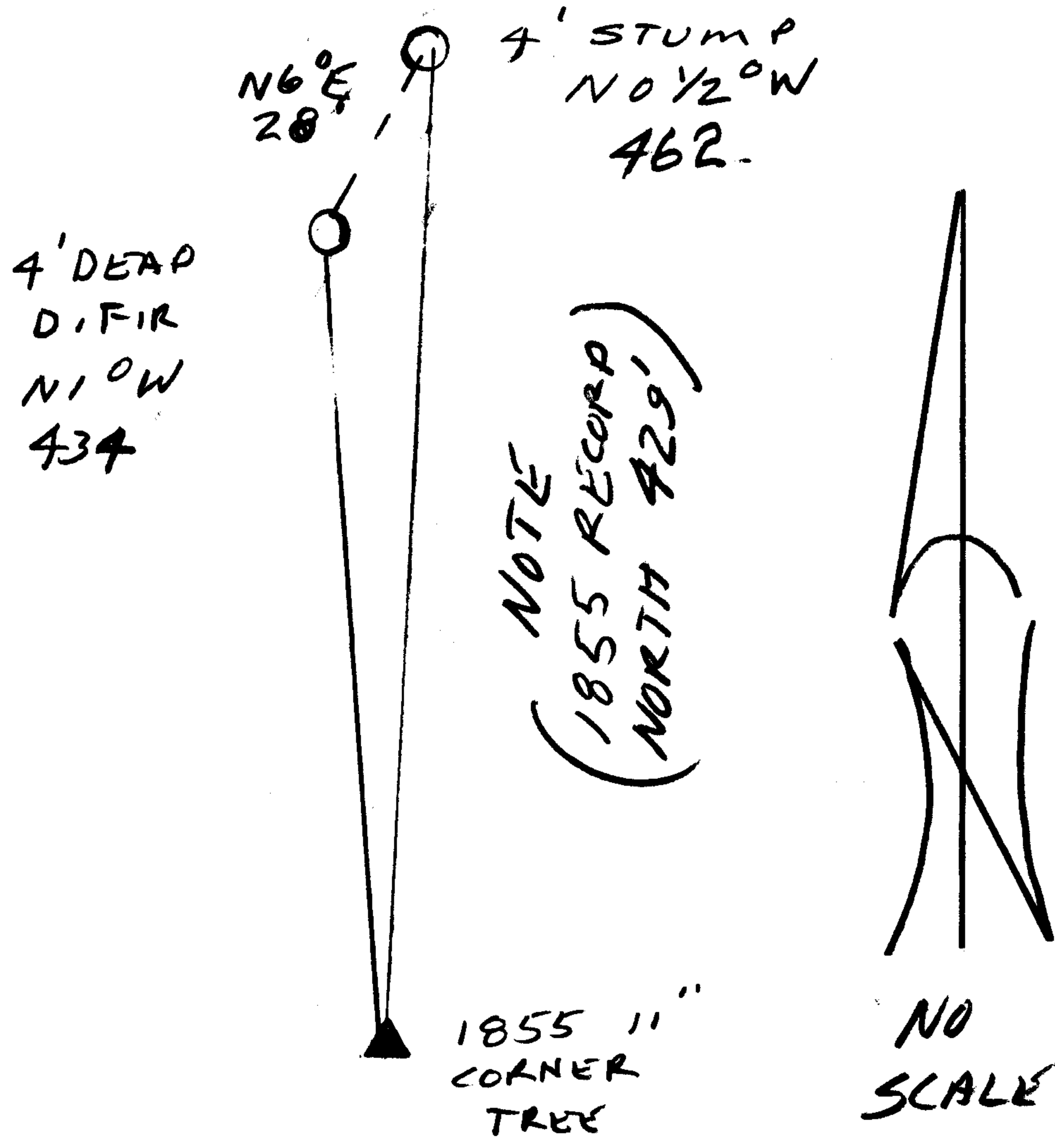
NONE

N/A

New Accessories

NONE

Sketch of Monument, Accessories, and General Area



Location & Comments

Comp. Declin. 17 3/4° E
 Agency DCSO
 Party Chief RANDALL W. SMITH
 Notekeeper [Signature]
 Witnesses STEPHEN J. FLAISE

Address

Surveyor's Seal

REGISTERED
 PROFESSIONAL
 LAND SURVEYOR

Randall W. Smith
 EXPIRES 6-30-98

OREGON
 JULY 25, 1990
 RANDALL W. SMITH
 2469

TIE BETWEEN
 W 1/4 6 T 31 S R 5 W
 AND POSSIBLE LINE TREE

2/20/97
 4' DIA
 BROKEN SURF, RWS
 STUMP STUMP

N 8 E
 28'
 COMPASS
 BRC

N 0 1/2° W
 461.9

N 1 0° W
 434 FT

1855
 COR. TREE
 (NO STUMP)

252.62 FT

$\angle = 163^{\circ} 22' 18''$

$\angle = 23^{\circ} 56' 30''$

(NET)

S 53° 20' W

COMPASS

CHECK DISTANCE

HUB TO LINE TREE

= 653 13

U.S. FILE NO. 64/74-8