

GOVERNMENT CORNER RESTORATION FORM

FILED

Township 22S Range 8W Sec. \_\_\_\_\_

County DOUGLAS

Date: 4/3/97 By: PC

This survey consists of:

State OR

Date 3-17-97

No. \_\_\_\_\_

Map: \_\_\_\_\_

Narrative: \_\_\_\_\_

Corner Designation

1855

Corner Ref: CS 04/74-6

S 4	WC
S 9	MC

- Condition Report Only
- Not Found
- Renewed
- Unrecorded
- Surveyed In
- Referenced Out

MONUMENT DETAIL

Previous Renewals 1962 DCS0

Monument(s) Found: (Condition and Source)

BC/IP FROM 1962 DCS0  
RENEWAL NOT FOUND  
AREA NOW BELOW HIGH  
BANK.

N/A

Accessories Found:

BEARINGS AND DISTANCES TAKEN FROM W.C. POSITION  
4" NOW 27" DIA. W. OAK WITH A PREVIOUSLY OPENED  
BLAZE FACING SOUTHWEST NO SCRIBING VISIBLE  
BEARS N 12 1/2° W 151.4 FT (NOTE THIS AGREES WITH A  
CALCULATED POSITION USING ORIGINAL AND 1962  
BEARING + DISTANCES). 1855 OBT

18" NOW 26" DIA D. FIR WITH A FULLY HEALED  
DOUBLE BLAZE BEARS NORTH 110 FT  
(AGREES WITH REC.) 1962

NO OTHER BT'S FOUND

Monument Set (Procedure and Description)

5/8" x 5 FT LONG IRON ROD  
WITH ALUM. CAP MARKED  
WC MC IS SET AT A POSITION  
DETERMINED BY BT'S FOR WITNESS  
CORNER. PROTRUDES 6" ABOVE  
GROUND

2 3/4" DIA BRASS CAPON A 1 3/8"  
O.D. BY 32" LONG IRON PIPE  
IS SET AT A POINT EAST  
20 FT FROM W.C. PROTRUDES  
3" ABOVE GROUND

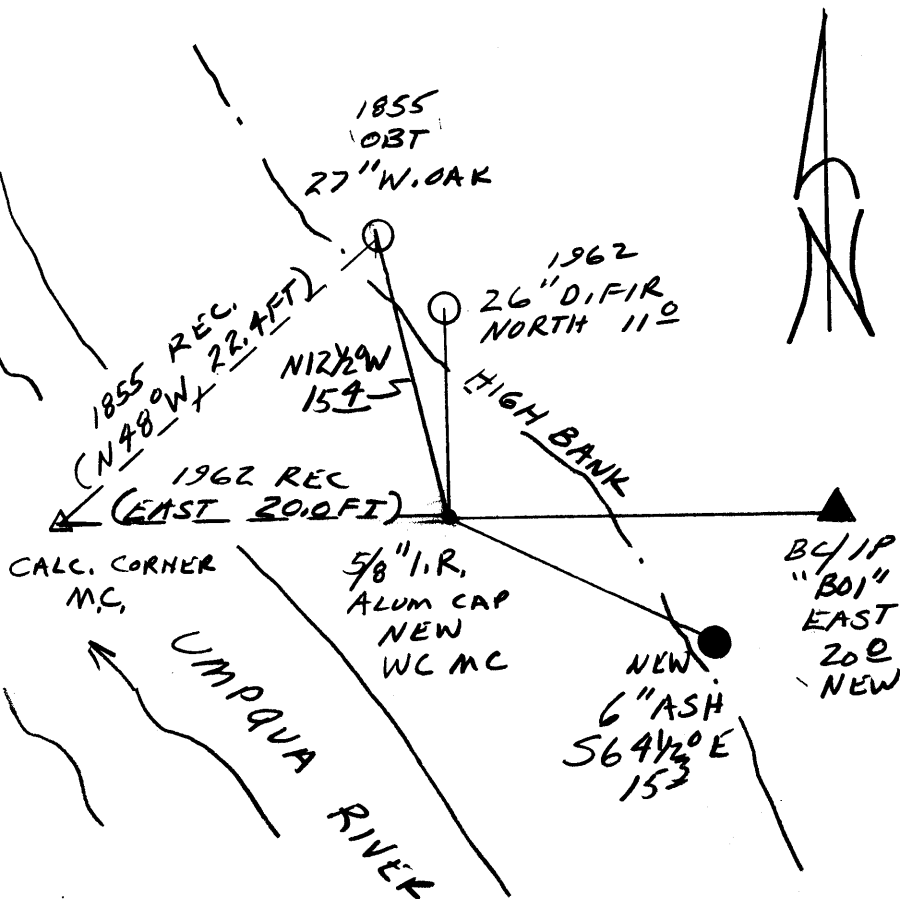
DOUGLAS COUNTY SURVEYORS  
BO1  
WEST 20 FT  
TO WC MC

1997  
OFFICE

New Accessories

6" DIA ASH DOUBLE DIAZED AND SCRIBED "WC MC S9CS BT"  
BEARS  $564\frac{1}{2}^{\circ}E$ , 15.3 FT

Sketch of Monument, Accessories, and General Area



Location & Comments

Comp. Declin.  $1734^{\circ}E$   
Agency DCSO  
Party Chief RANDALL W. SMITH  
Notekeeper [Signature]  
Witnesses STANLEY J. FLAISE

Address

Surveyor's Seal

REGISTERED  
PROFESSIONAL  
LAND SURVEYOR

Randall W. Smith  
EXPIRES 6-30-98

OREGON  
JULY 25, 1990  
RANDALL W. SMITH  
2469