

GOVERNMENT CORNER RESTORATION FORM

Date: 4/3/97 By: PBC

This survey consists of:

Township 29S Range 5W Sec. 33

County DOUGLASS

State OR

Date 3/24/97

No.

Narrative:

Corner Designation

LOCAL CORNER

Corner Rpt: CS 64/74-3

DOUGLAS COUNTY

Condition Report Only

Not Found

Renewed

Unrecorded

Surveyed In

Referenced Out

MONUMENT DETAIL

1/4 S33/S34

CS 21/12, 1917

PI # 400140

Previous Renewals 1948, 1962, 1977 DCSO, 1980 RUPPERT

Monument(s) Found: (Condition and Source)

2 1/2" BRASS CAP ON A 1 1/2" O.P. IRON PIPE PROTRUDES 6" ABOVE GROUND BEING NORTH WESTERLY. (1980)

TIP OF PLOW SHARE FOUND 8" BELOW GROUND ALONG SOUTHWESTERLY EDGE OF RC/IP (SOURCE UNKNOWN)

1 3/4" O.D. IRON PIPE PROTRUDES 3" ABOVE GROUND ALONG NORTH EDGE OF RC/IP. (SOURCE UNKNOWN)

(CS 21/12 CALLS OUT CORNER AS BEING A 1" IRON PIPE 1/1917)

T29S R5W

1/4

S33/S34

RLS 866

1980

Accessories Found:

20" NOW 24" DIA. W. OAK WITH A FULL HEADED SINGLE BLAZE, BEARS S 52 1/2° W, 66.6 FT (AGREES WITH REC.) 1962

7" NOW 13" DIA 1 FT HIGH MADRONA STUMP NO BLAZES VISIBLE BEARS N 4 1/2° E, 49.9 FT (AGREES WITH REC.) 1962

Monument Set (Procedure and Description)

Monument Detail

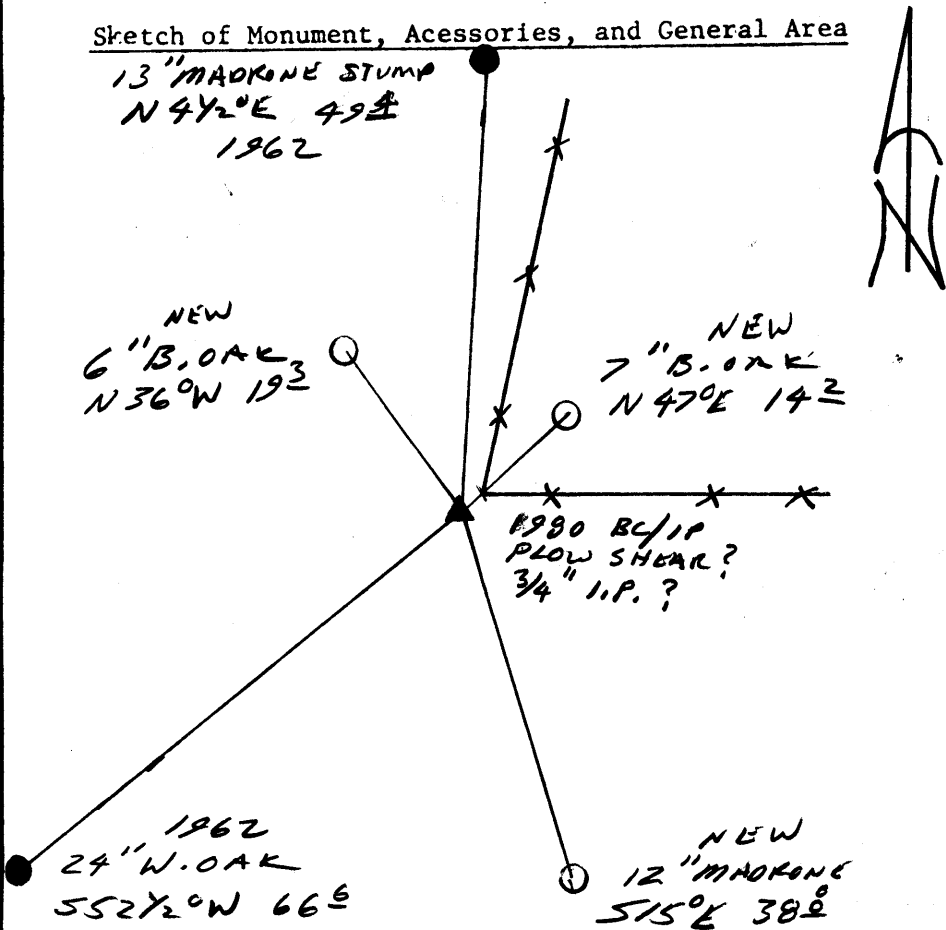
BC/IP MEASURED 32" LONG
 IS STRAIGHTENED AND RETURNED
 TO PLUMB POSITION. PROTRUS
 12" ABOVE GROUND.

N/A

New Accessories

12" DIA MADRONE DOUBLE BLAZED AND SCRIBED "Y4S34CS BT"
 BEARS S 15° E 38.8 FT
 6" DIA B. OAK DOUBLE BLAZED AND SCRIBED "Y4S33CS BT"
 BEARS N 36° W 19.3 FT
 7" DIA DOUBLE TRUNKED B. OAK ~~SA~~ DOUBLE BLAZED
 AND SCRIBED "Y4S34CS BT" ON SOUTH EASTERLY TRUNK FOOT
 CROWN BEARS N 47° E 14.2 FT

Sketch of Monument, Accessories, and General Area



Location & Comments

FENCE CORNER WITH
 FENCES PINNING EAST
 AND N. 20° E. BEARS
 N 65° E 3.0 FT FROM
 BC/IP

Comp. Declin. 17 3/4° E
 Agency DCSO
 Party Chief RANDALL W. SMITH
 Notekeeper [Signature]
 Witnesses JOHN PIKE

Address

Surveyor's Seal

REGISTERED
 PROFESSIONAL
 LAND SURVEYOR

[Signature]
 EXPIRES 6-30-98

OREGON
 JULY 25, 1990
 RANDALL W. SMITH
 2469