

GOVERNMENT CORNER RESTORATION FORM

Date: 1-30-97 by: JP

This survey consists of:

Township 29S Range 5W Sec. 1

County DOUGLAS Map: _____

State OR Date 11-27-96

No. _____

Narrative: _____

Corner Rpt: _____

Corner Designation

1/4 S 2 | S 1

DOUGLAS COUNTY

SURVEYOR

- Condition Report Only
- Not Found
- Renewed
- Unrecorded
- Surveyed In
- Referenced Out

Previous Renewals VOL 5 pg 222

Monument(s) Found: (Condition and Source)

10-2-96 2" BRASS CAP, 2" IRON PIPE (GALV.) 28" LONG SET FLUSH WITH GROUND
WITH TWO BEARING TREES
PER HARVEY CHRISTENSEN RECEIPT
SURVEY.

MONUMENT OF ORIG. CORNER
POSITION NOT FOUND

NTC1
T29S R5W

1/4

52 | S1

1996

PLS 2603

COUNTY SEARCH OF THIS CORNER
WAS MADE IN 8/70 AND 9/72
CS. 54/81 NOTES THAT
A 1 1/4" IRON PIPE WAS FOUND
AT APPROXIMATE CORNER LOCATION,
NO BT'S FOUND. UNSURE OF
POSITION OF THIS FOUND I.P. AS
NO I.P. WAS FOUND NEAR
CALCULATED POSITION OF CORNER
USING: FOUND OAK B.O.

Accessories Found:

ORIG. 12" DIA. MAPLE NOT FOUND CAT WORK IN AREA

10-9-96 ORIG 10" DIA. ASH - A 36" DIA ROTTED ASH
WITH NEW SPROUTS IS FOUND IN A AREA THAT
IS NEAR A CALCULATED POSITION OF ORIG. ASH
BT(?) NO SCRIBING OR BLAZES FOUND.

VOL 5 pg 222

(FD 10-14-96 by SJF + JP ASSO)

12" NEW 29" W. OAK IS OPENED AND SCRIBING

FOUND "BT" RECORD BEARING PER ROAD SURVEY

VOL 5 pg 222 IS SOUTH 10.29 CHAINS. (WLF BRIGGS)

11-21-96

RENEWAL

Monument Set (Procedure and Description) 11-27-96

Monument Detail

CHRISTENSEN BC AND IP REMOVED FROM GROUND.
A DCSO 2 3/8 INCH BRASS CAP ON A 1 3/8 INCH O.D. 32 INCH LONG
IRON PIPE SET 2 INCHES BELOW GROUND SURFACE.

CORNER SET AT RECORD BEARING
AND DISTANCE FROM 29" W. OAK B.O.
PER VOL 5 PG 222

DOUGLAS COUNTY SURVEYOR'S OFFICE

T 295
R 5W

S2 | S1

1/4

1996

New Accessories

11-27-96

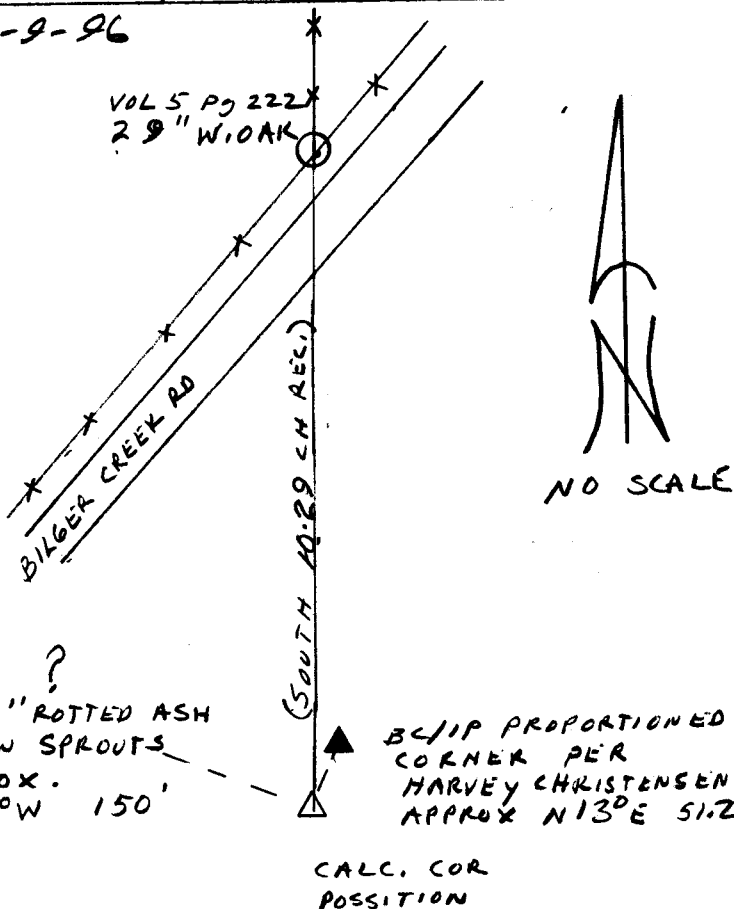
A 15 INCH D.B.H. WHITE OAK, SCRIBED 1/4 S1 CS BT ON A DOUBLE BLAZE, BEARS S 78 1/4° E,
267 1/2 FEET DISTANT.

A 10 INCH D.B.H. DOUGLAS FIR, SCRIBED 1/4 S1 CS BT ON A DOUBLE BLAZE, BEARS S 36 3/4° E,
284 1/2 FEET DISTANT

AND CHRISTENSEN BT'S A 15" D.B.H. ASH, SCRIBED 1/4 S2 BT ON A SINGLE BLAZE, BEARS N 84° W, 187 3/4 FT. DIST.
A DOUBLE TRUNKED MAPLE WITH A 12" D.B.H. NORTHERLY TRUNK SCRIBED 1/4 S2 BT ON A SINGLE BLAZE, BEARS N 32° W, 176 1/2 FT. DIST.

Sketch of Monument, Accessories, and General Area

10-9-96



Location & Comments
NOTE: BOX IN DOWN STAIRS
SURVEYOR'S STORAGE ROOM HAS
WOOD WITH SCRIBING FROM
29" W. OAK (VOL 5 PG 222)

Comp. Declin. 17 3/4° E
Agency DCSO
Party Chief RANDALL W. SMITH
Notekeeper
Witnesses STEPHEN J. FLAUSCH
JOHN PIKE

Address

Surveyor's Seal

REGISTERED
PROFESSIONAL
LAND SURVEYOR

Randall W. Smith
DARES 6-30-98

OREGON
JULY 25, 1990
RANDALL W. SMITH
2489

36" ROTTED ASH
NEW SPROUTS
APPROX. N 72° W 150'

BC/IP PROPORTIONED
CORNER PER
HARVEY CHRISTENSEN,
APPROX N 13° E 51.2'

CALC. COR
POSITION

GOVERNMENT CORNER RESTORATION FORM

Date: 1-30-97 by: JP

This survey consists of:

Township 29S Range 5W Sec. 1

County DOUGLAS Map: _____

State OR Date 11-27-96

No. _____

Narrative: _____

Corner Rpt: _____

Corner Designation

1/4 S 2 | S 1

DOUGLAS COUNTY

SURVEYOR

- Condition Report Only
- Not Found
- Renewed
- Unrecorded
- Surveyed In
- Referenced Out

Previous Renewals VOL 5 pg 222

Monument(s) Found: (Condition and Source)

10-2-96 2" BRASS CAP, 2" IRON PIPE (GALV.) 28" LONG SET FLUSH WITH GROUND
WITH TWO BEARING TREES
PER HARVEY CHRISTENSEN RECEIPT
SURVEY.

MONUMENT OF ORIG. CORNER
POSITION NOT FOUND

NTC1
T29S R5W

1/4

52 | S1

1996

PLS 2603

COUNTY SEARCH OF THIS CORNER
WAS MADE IN 8/70 AND 9/72
CS. 54/81 NOTES THAT
A 1 1/4" IRON PIPE WAS FOUND
AT APPROXIMATE CORNER LOCATION,
NO BT'S FOUND. UNSURE OF
POSITION OF THIS FOUND I.P. AS
NO I.P. WAS FOUND NEAR
CALCULATED POSITION OF CORNER
USING: FOUND OAK B.O.

Accessories Found:

ORIG. 12" DIA. MAPLE NOT FOUND CAT WORK IN AREA

10-9-96 ORIG 10" DIA. ASH - A 36" DIA ROTTED ASH
WITH NEW SPROUTS IS FOUND IN A AREA THAT
IS NEAR A CALCULATED POSITION OF ORIG. ASH
BT(?) NO SCRIBING OR BLAZES FOUND.

VOL 5 pg 222

(FD 10-14-96 by SJF + JP ASSO)

12" NOW 29" W. OAK IS OPENED AND SCRIBING

11-21-96 FOUND "BT" RECORD BEARING PER ROAD SURVEY
VOL 5 pg 222 IS SOUTH 10.29 CHAINS. (WLF BRIGGS)

RENEWAL

Monument Set (Procedure and Description) 11-27-96

Monument Detail

CHRISTENSEN BC AND IP REMOVED FROM GROUND.
A DCSO 2 3/8 INCH BRASS CAP ON A 1 3/8 INCH O.D. 32 INCH LONG
IRON PIPE SET 2 INCHES BELOW GROUND SURFACE.

DOUGLAS COUNTY SURVEYORS OFFICE

CORNER SET AT RECORD BEARING
AND DISTANCE FROM 29" W. OAK B.P.
PER VOL 5 PG 222

T295
R5W

52 + 51

1/4

1996

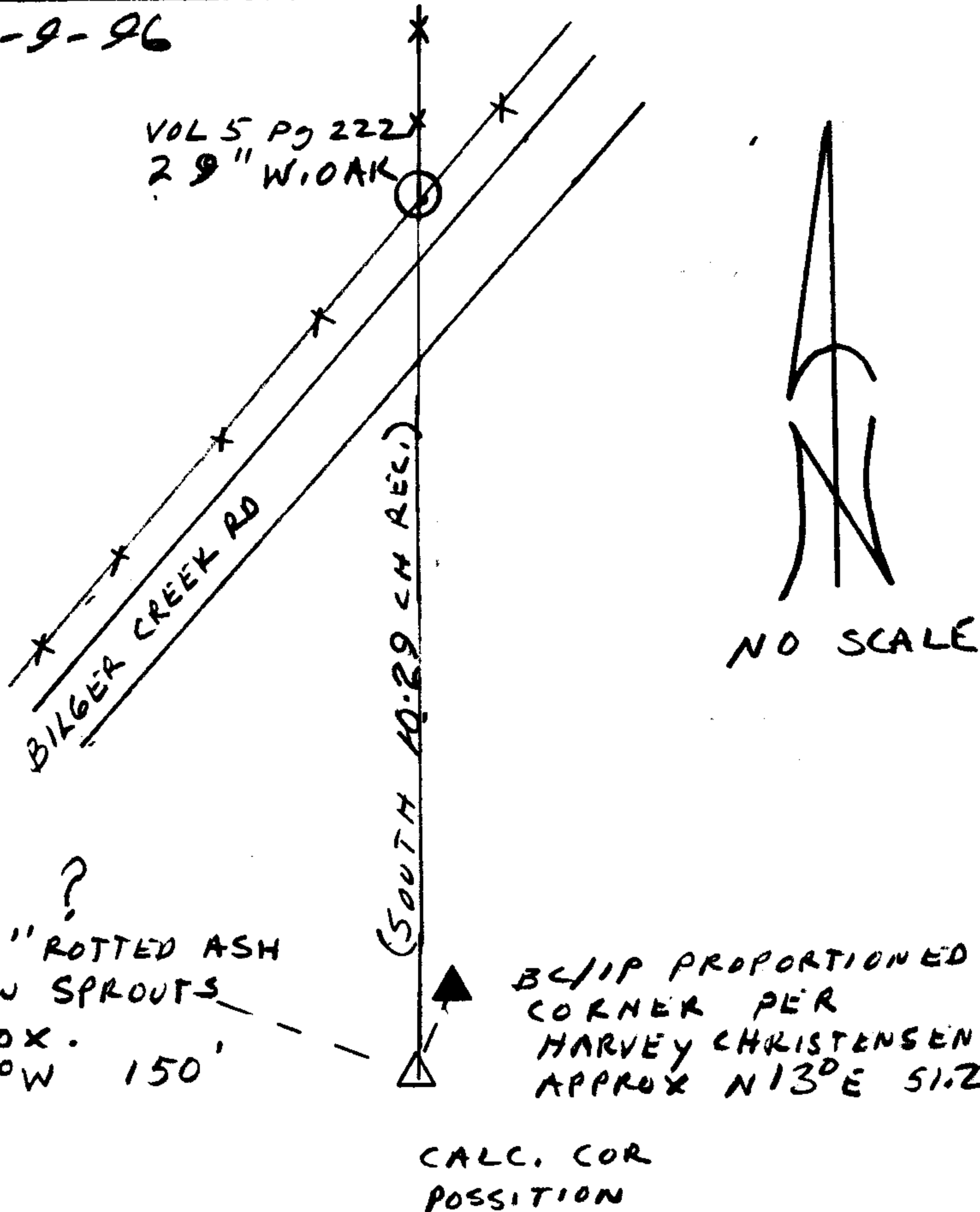
New Accessories 11-27-96

A 15 INCH D.B.H. WHITE OAK, SCRIBED 1/4 S1 CS BT ON A DOUBLE BLAZE, BEARS S 78 1/4° E,
267 1/2 FEET DISTANT.

A 10 INCH D.B.H. DOUGLAS FIR SCRIBED 1/4 S1 CS BT ON A DOUBLE BLAZE, BEARS S 36 3/4° E,
284 1/2 FEET DISTANT

AND CHRISTENSEN BT'S A 15" D.B.H. ASH, SCRIBED 1/4 S2 BT ON A SINGLE BLAZE, BEARS N 84° W, 187 3/4 FT. DIST.
A DOUBLE TRUNKED MAPLE WITH A 12" D.B.H. NORTHERLY TRUNK SCRIBED 1/4 S2 BT ON A SINGLE BLAZE, BEARS N 32° W, 176 1/2 FT. DIST.
Sketch of Monument, Accessories, and General Area

10-9-96



Location & Comments
NOTE: BOX IN DOWN STAIRS
SURVEYORS STORAGE ROOM HAS
WOOD WITH SCRIBING FROM
29" W. OAK (VOL 5 PG 222)

Comp. Declin. 17 3/4° E
Agency DCSO
Party Chief RANDALL W. SMITH
Notekeeper Randall W. Smith
Witnesses STEPHEN J. FLAUSCH
JOHN PIKE

Address

Surveyor's Seal

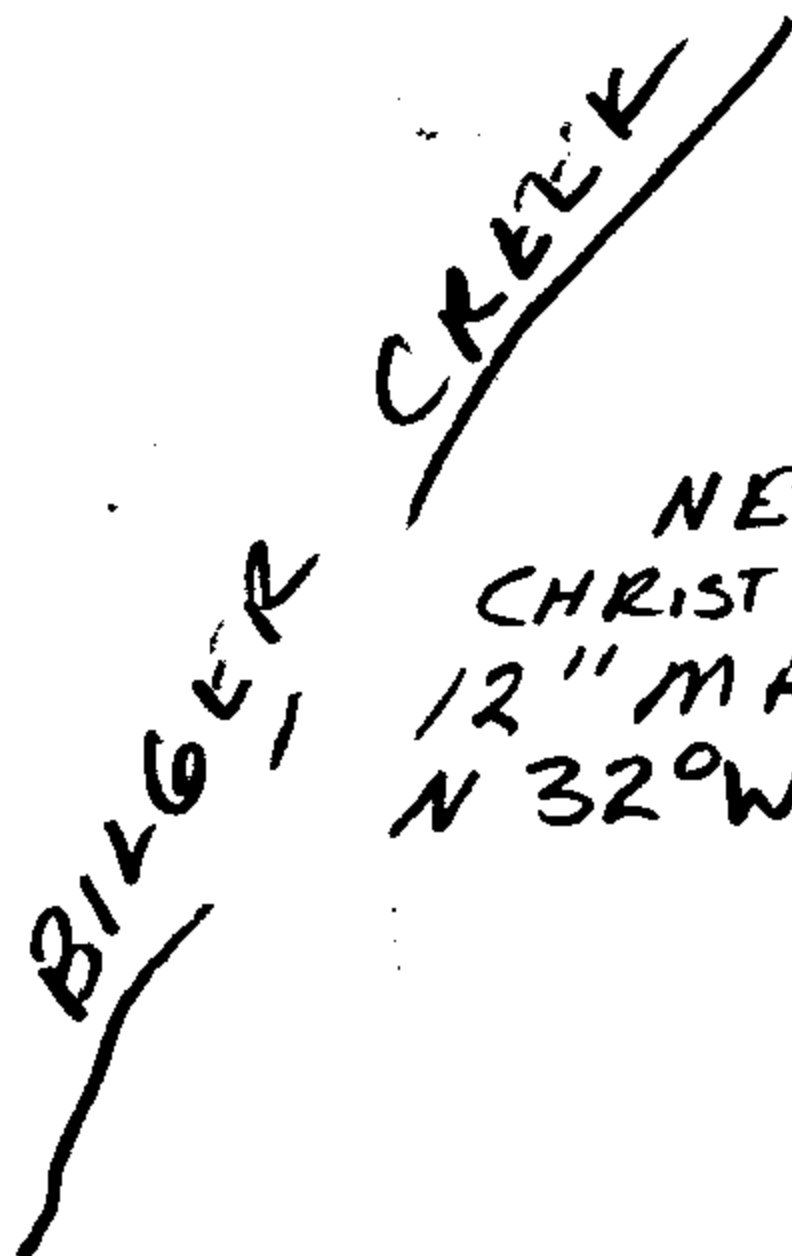
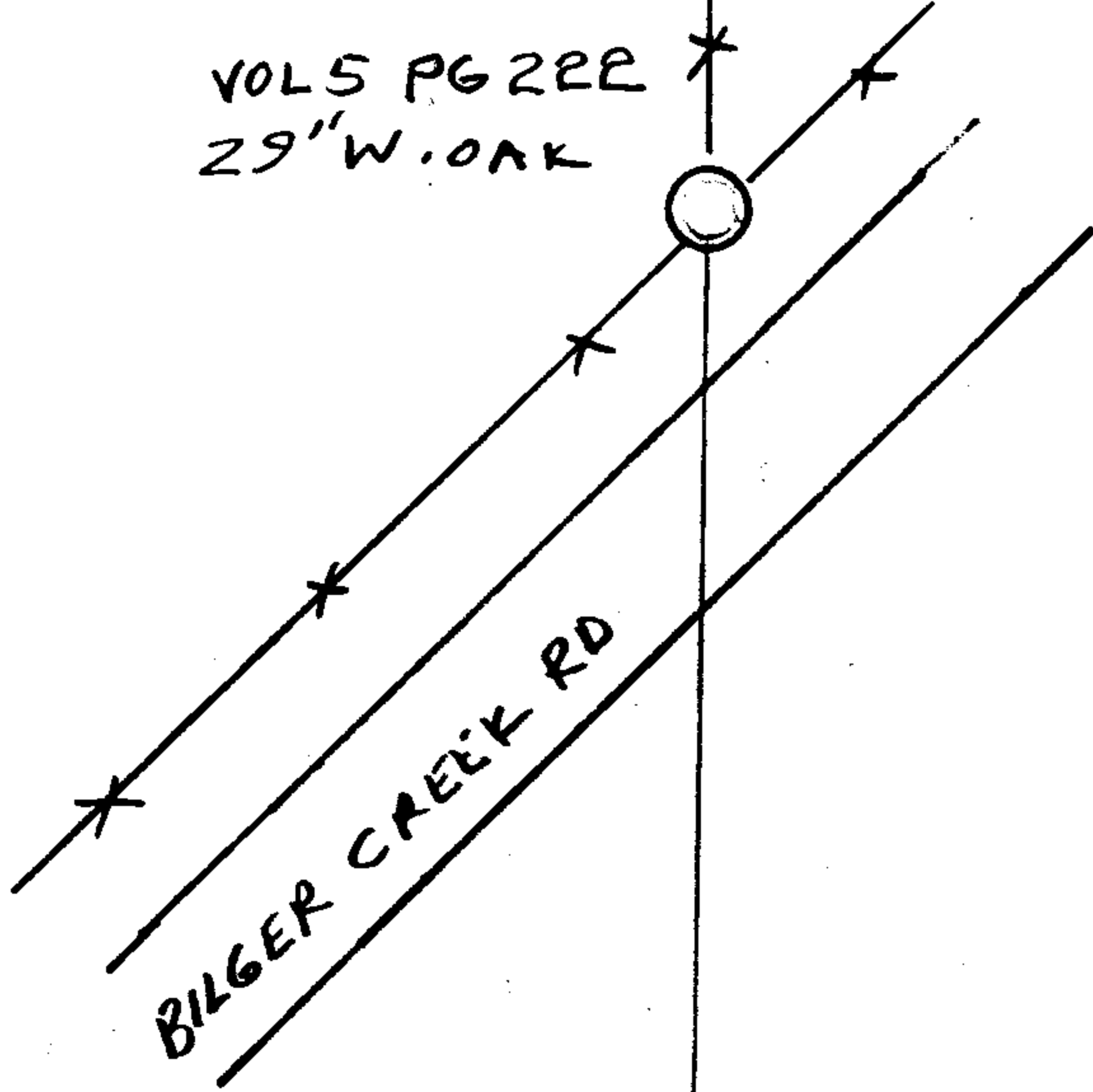
REGISTERED
PROFESSIONAL
LAND SURVEYOR

Randall W. Smith
EXPIRES 6-30-98

OREGON
JULY 25, 1990
RANDALL W. SMITH
2489

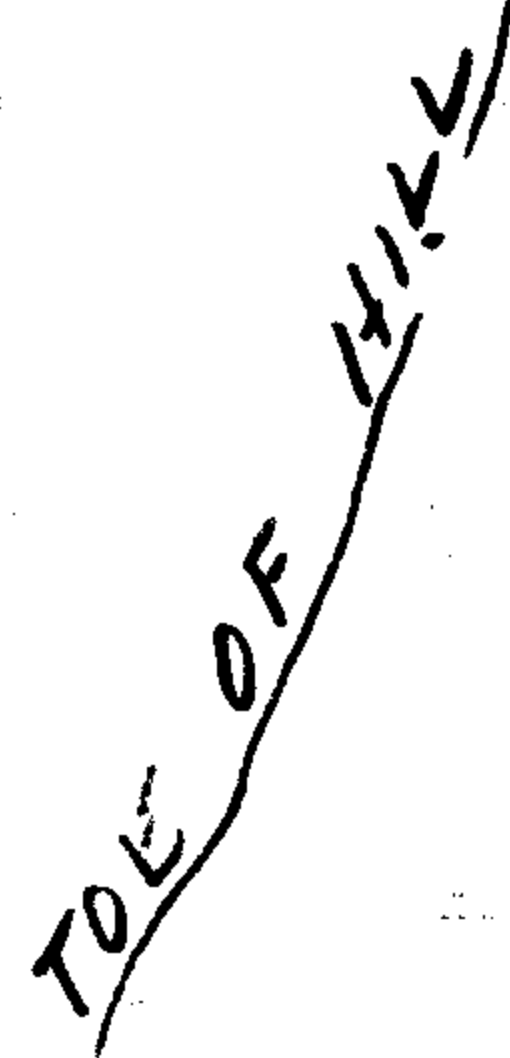
11-27-96

VOLS PG 222
29" W. OAK



SOUTH 679.14'

OPEN FIELD



NEW CHRISTENSEN BT
12" MAPLE
N 32° W 176'

NEW CHRISTENSEN BT
15" ASH
N 84° W 187'

NEW 1996
DL50 BCI/P

NEW 15" W. OAK
S 78 1/4° E 267'

NEW 10" D. FIR
S 36 3/4° E 284'

REGISTERED
PROFESSIONAL
LAND SURVEYOR

Randall W. Smith
EXPIRES 6-30-98

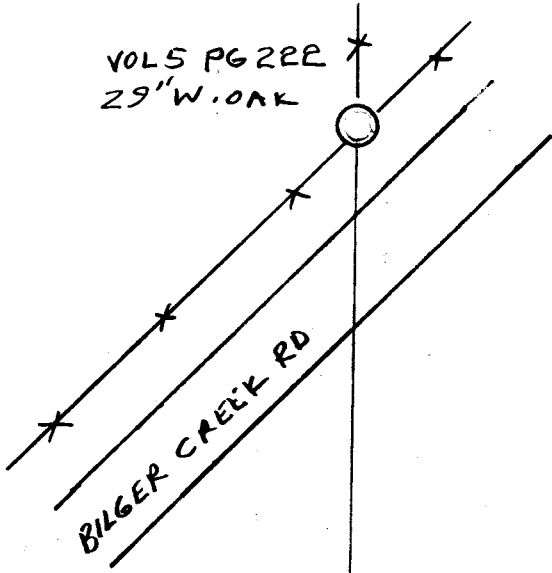
OREGON
JULY 25, 1990
RANDALL W. SMITH
2469

C.S. File No. 64/73

C.S. FILE CONTAINS
ADDITIONAL INFORMATION
CONCERNING SETTING THE
1/4 COR., INCLUDING
CORRESPONDENCE WITH THE
BLM

11-27-96

VOLS PG 22E
29" W. OAK



SOUTH 679.14'



BILGER CREEK

NEW
CHRISTENSEN BT
12" MAPLE
N 32°W 176'

OPEN
FIELD

TOE OF HILL

NEW
CHRISTENSEN BT
15" ASH
N 84°W 187'

NEW
1996
DCSO BCI/P

NEW
15" W. OAK
S 78°40'E 267'

REGISTERED
PROFESSIONAL
LAND SURVEYOR

Randall W. Smith
EXPIRES 6-30-98

OREGON
JULY 25, 1990
RANDALL W. SMITH
2469

NEW
10" D. FIR
S 36°40'E 284'

OS. File No. 64/73

C.S. FILE CONTAINS
ADDITIONAL INFORMATION
CONCERNING SETTING THE
1/4 COR., INCLUDING
CORRESPONDENCE WITH THE
BLM