



Monument Set (Procedure and Description)

Monument Detail

NONE

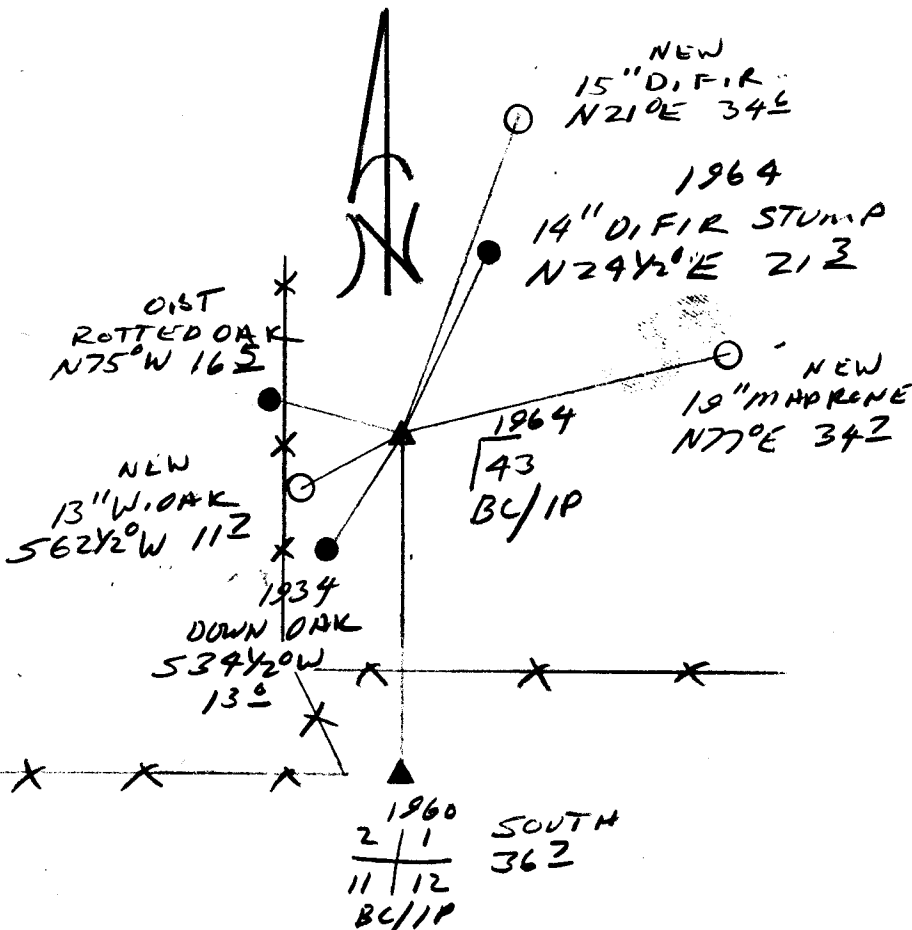
N/A

15" D. FIR DOUBLE BLAZE AND SCRIBED  
"NW DLG 43 CS BT" BEARS N21°E,  
34.6 FT

New Accessories

13" DIA W. OAK DOUBLE BLAZED "NW DLG 43 CS BT"  
BEARS S62°20'W, 111.7 FT  
ALSO BE/1P SW COR SEC 1 BEARS SOUTH 36.7 FT  
(REC. SOUTH 37.6 FT).

19" MADRONE WITH A SW FACING BLAZE SCRIBED "T255R5WSICSBT"  
BEARS N77°E, 34.7 FT  
Sketch of Monument, Accessories, and General Area



Location & Comments

Comp. Declin. 173/40E  
Agency DCS  
Party Chief RANDALL W. SMITH  
Notekeeper  
Witnesses STEPHEN J. FLAVEL

Address

Surveyor's Seal

REGISTERED  
PROFESSIONAL  
LAND SURVEYOR

*Randall W. Smith*  
EXPRES 6-30-98

OREGON  
JULY 25, 1980  
RANDALL W. SMITH  
2469