

GOVERNMENT CORNER RESTORATION FORM

Date: 8-7-97 By: PR

Township 255 Range 5W Sec. 22 County DOUGLAS

This survey consists of:

State OK Date 7-28-97 No. _____

Narrative: _____
Corner Rpt: CS 64/71-24

Corner Designation

DLC
40 | 040060

DOUGLAS COUNTY
SURVEYOR

- Condition Report Only
- Not Found
- Renewed
- Unrecorded
- Surveyed In
- Referenced Out

Previous Renewals VOL 3 PG 35

Monument(s) Found: (Condition and Source)

A STONE PROTRUS 15"
ABOVE GROUND WITH A 4" BY
10" TOP MARKED ON WEST
FACE "C 40 T255 RSW"
STONE LEANS 6" WESTWARD
OF PLUMB. SOURCE UNKNOWN

N/A

Accessories Found:

30" B.OAK NOW REMAINS OF OLD OAK FOUND KNUCKED
OVER AND SCATTERED AROUND AREA OF CORNER SHOWS
EVIDENCE OF BEING PREVIOUSLY OPENED NO SCRIBING
FOUND RECORD SOUTH 6 LKS. OBT

20" NOW 39" DIA 20 FT HIGH B. OAK SNAG WITH A
PREVIOUSLY OPENED METAL BLAZE. BEARS N 75° E,
95.7 FT (AGREES WITH REC.) OBT

3/4" I.D. 1 INCH PIPE 2" BELOW GROUND, BEARS
SOUTH 13.9 FT (AGREES WITH REC.) VOL 3 PG 35

✓ 040060

C.S. File No. 64/71-24

Monument Set (Procedure and Description)

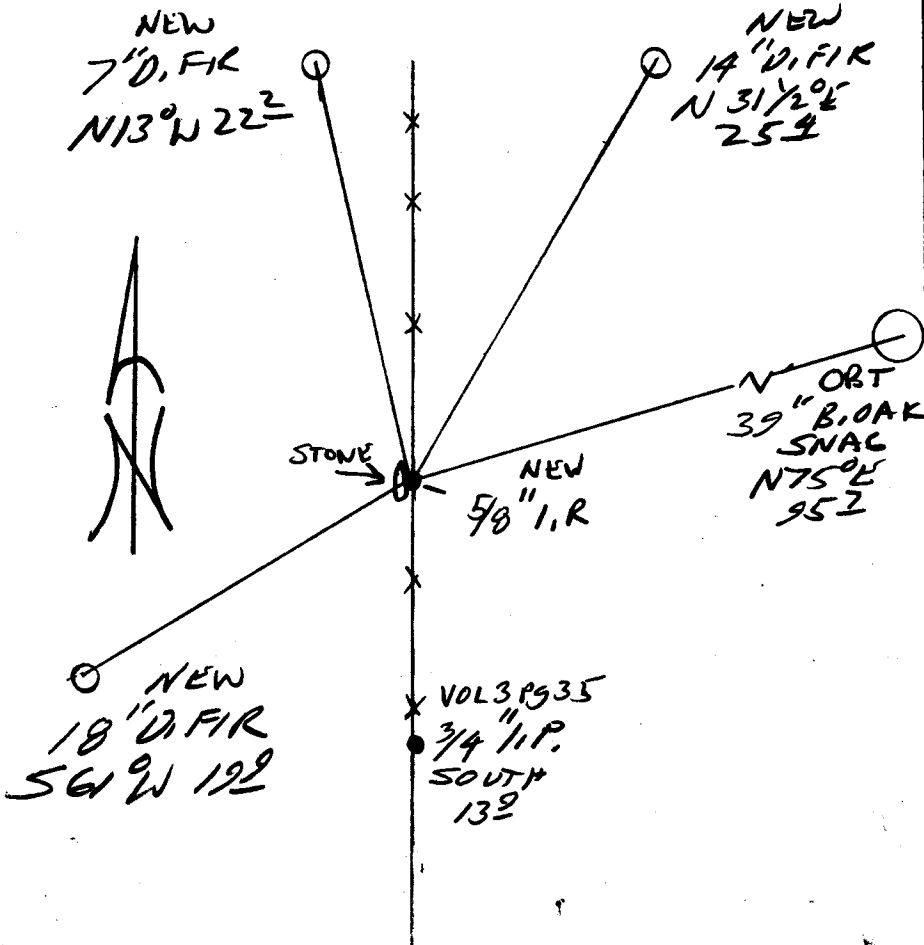
POSITION OF CORNER FALLS
 UNDER FENCE SET A 5/8"
 BY 30" LONG IRON ROD WITH
 A DCSO ALUM. CAP STAMPED
 1997" IS SET AT PLUMB
 POSITION OF STONE, PROTRUS
 14" ABOVE GROUND. STONE
 IS A LONG WEST EDGE OF I.R.

N/A

New Accessories

14" D. FIR DOUBLE BLAZED AND SCRIBED "SE DLC 40 CS BT"
 BEARS N 31 1/2° E, 25.4 FT
 18" D. FIR DOUBLE BLAZED AND SCRIBED "SE DLC 40 CS BT"
 BEARS S 61° W, 19.9 FT
 7" D. FIR DOUBLE BLAZED AND SCRIBED "SE DLC 40 CS BT"
 BEARS N 13° W, 22.7 FT

Sketch of Monument, Accessories, and General Area



Location & Comments

Comp. Declin. 17 3/4° E
 Agency DCSO
 Party Chief RANDALL W. SMITH
 Notekeeper [Signature]
 Witnesses STEPHEN J. FRANKS

Address

Surveyor's Seal

REGISTERED
 PROFESSIONAL
 LAND SURVEYOR

EXPIRES 6-30-98

OREGON
 JULY 25, 1990
 RANDALL W. SMITH
 2489