

GOVERNMENT CORNER RESTORATION FORM

Date: 08-7-97 By: RC

Township 25S Range 5W Sec. 32 County DOUGLAS

This survey consists of:

State OR Date 7-14-97 No. _____

Narrative: _____
Corner Ref: CS 64/71-23

Corner Designation

$\frac{1}{4} \frac{S32}{S5}$

DOUGLAS COUNTY

Condition SURVEYORly

Not Found

Renewed

Unrecorded

Surveyed In

Referenced Out

Previous Renewals 1972 DCSO

MONUMENT DETAIL

Monument(s) Found: (Condition and Source)

2 1/2" DIA. BRASS CAPONAN
IRON PIPE, FLUSH WITH GROUND
(1972)

COUNTY SURVEYORS OFFICE

T25S R5W

$\frac{1}{4} \frac{S32}{S5}$
1972

Accessories Found:

12" NOW 18" DIA. W. OAK WITH A FULLY HEALED
DOUBLE BLAZE, BEARS N54°E, 179.6 FT (AGREES
WITH REC.) 1972

1972 SW ASH BT NOW GONE

Monument Set (Procedure and Description)

Monument Detail

NONE

N/A

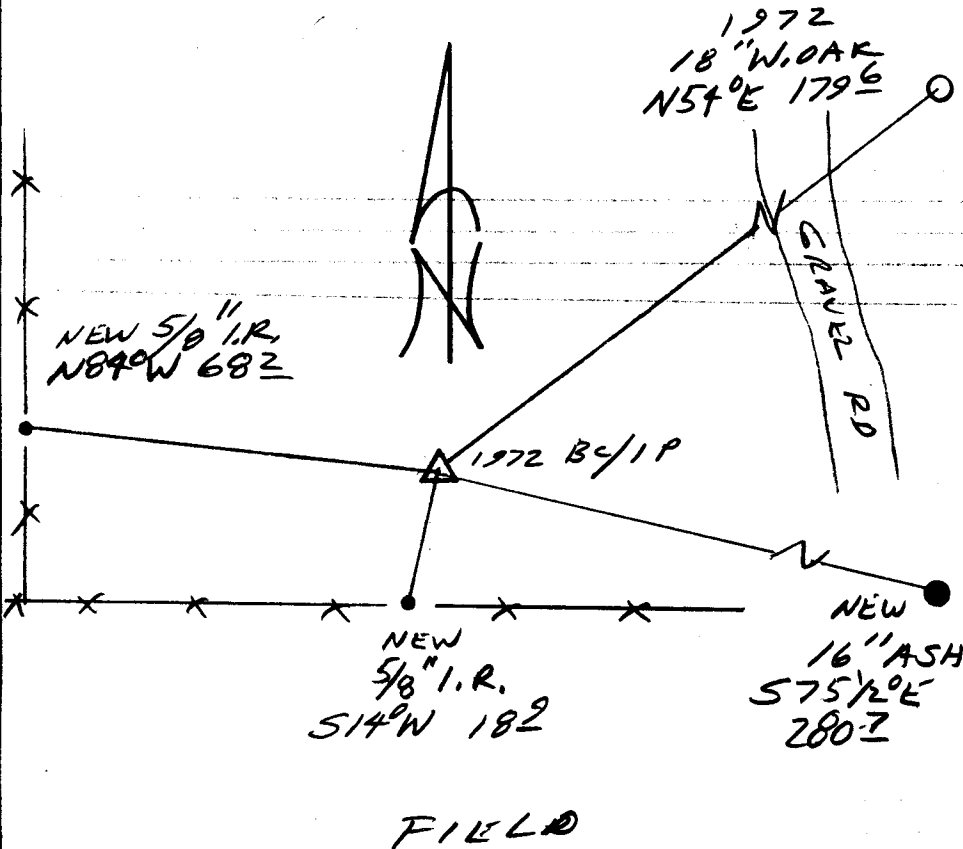
New Accessories

- 16" DIA ASH DOUBLE BLAZED AND SCRIBED "Y455CSBT"
BEARS S75 1/2° E, 280.7 FT
- 5/8" BY 30" IRON ROD WITH ALUM, CAP STAMPED "B01 1997"
PROTRUDES 6" ABOVE GROUND IN E-W FENCE LINE,
BEARS S14° W, 18.9 FT
- 5/8" BY 30" IRON ROD WITH ALUM, CAP STAMPED "B02 1997"
PROTRUDES 6" ABOVE GROUND IN N-S FENCE LINE,
BEARS N84° W, 68.2 FT

Sketch of Monument, Accessories, and General Area

Location & Comments

CORNER FIES 18'
NORTH OF A E-W
FENCE LINE



Comp. Declin. 17 3/4° E
 Agency DCSO
 Party Chief RANDALL W SMITH
 Notekeeper *[Signature]*
 Witnesses STEPHEN J FLAUSE

Address

Surveyor's Seal

REGISTERED
 PROFESSIONAL
 LAND SURVEYOR

[Signature]
 EXPIRES 6-30-98

OREGON
 JULY 25, 1990
 RANDALL W. SMITH
 2469

FIELD