

Monument Set (Procedure and Description)

Monument Detail

NONE

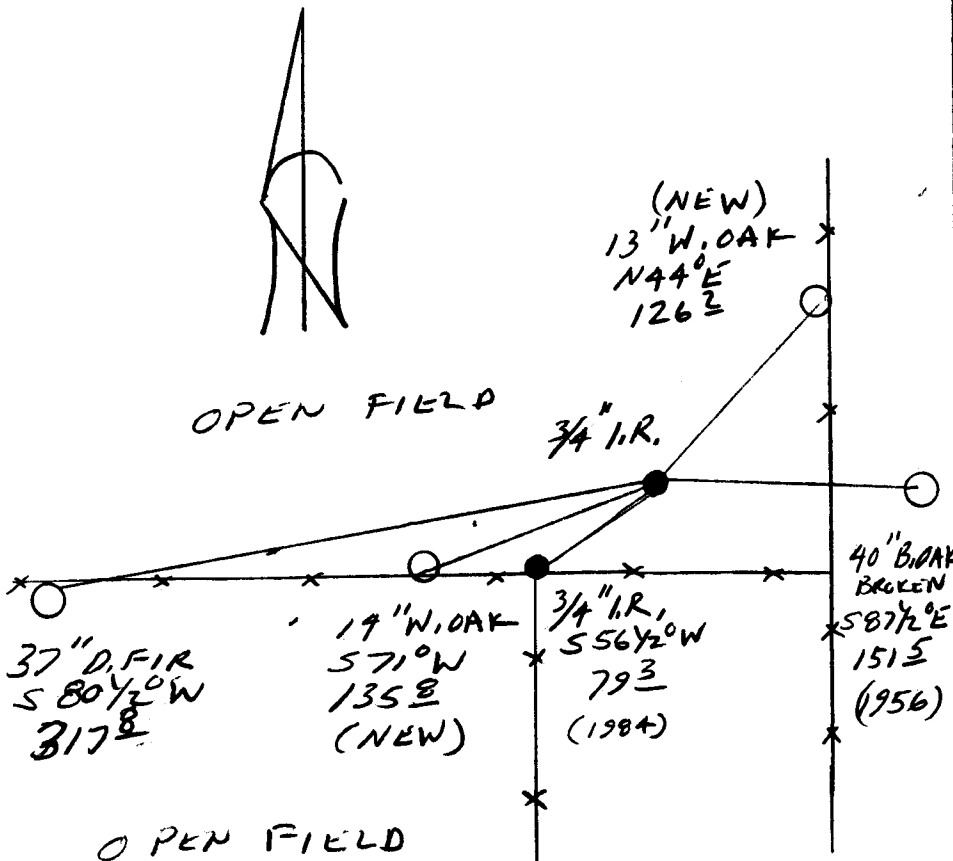
N/A

New Accessories

14" DIA W/OAK DOUBLE BLAZED AND SCRIBED "19529CSBT"
BEARS S 71°W, 135.8 FT

13" DIA W/OAK DOUBLE BLAZED AND SCRIBED "19528CSBT"
BEARS N 44°E, 126.2 FT

Sketch of Monument, Accessories, and General Area



Location & Comments

CORNER LIES IN OPEN
FLOWER FIELD

Comp. Declin. 17 3/4° E
Agency DCSO
Party Chief RANDALL W. SMITH
Notekeeper [Signature]
Witnesses STEPHEN J. PLASEL

Address

Surveyor's Seal

REGISTERED
PROFESSIONAL
LAND SURVEYOR

[Signature]
EXPIRES 6-30-98

OREGON
JULY 25, 1990
RANDALL W. SMITH
2489