

RENEWAL

Monument Detail

Monument Set (Procedure and Description)

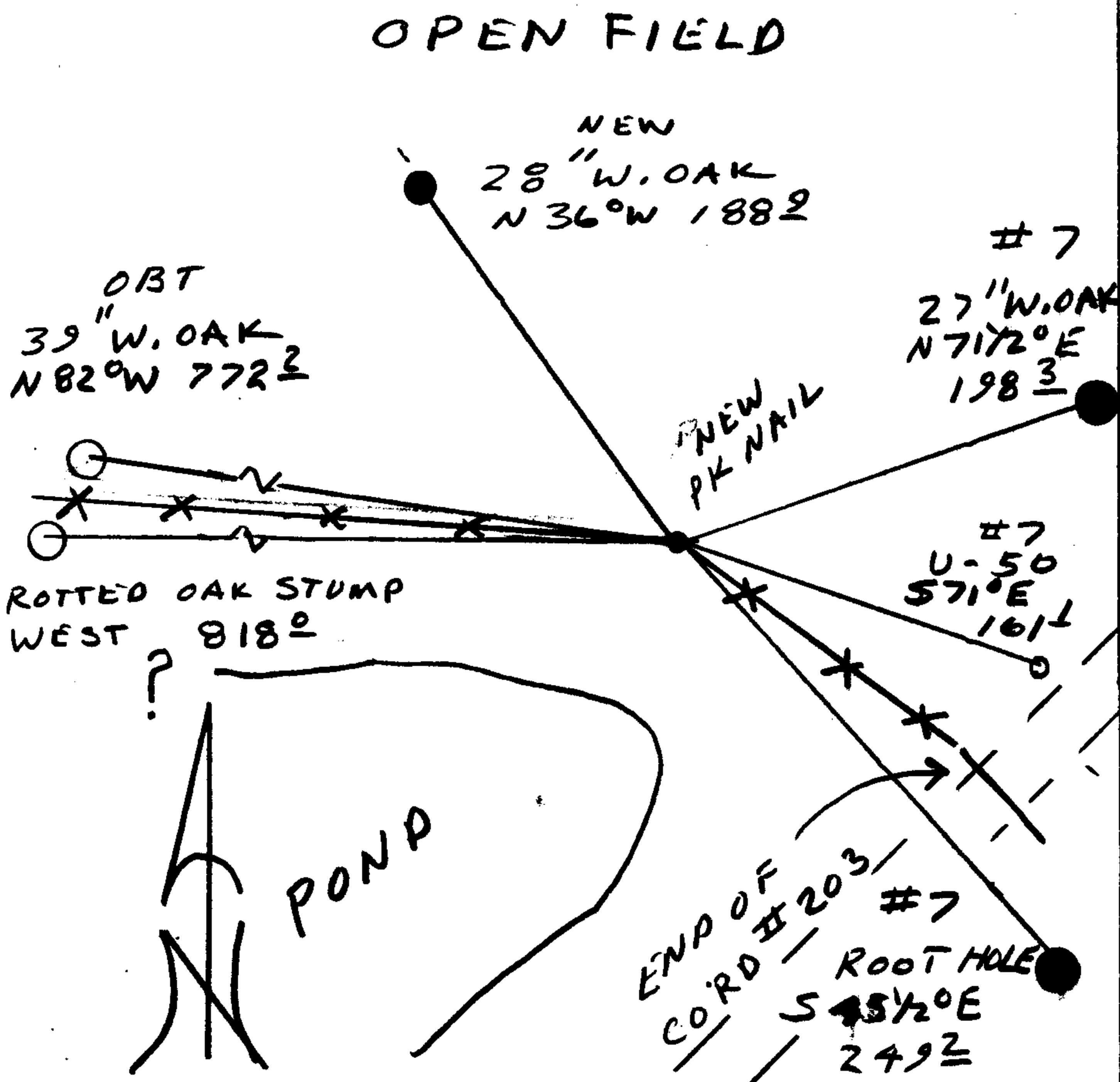
- SET A PK NAIL IN CONCRETE FENCE POST FOOTING APPROX. 1 FT WEST OF FENCE POST AT ANGLE IN FENCE LINE.
- POSITION OF CORNER WAS DETERMINED AT INTERSECTION OF DISTANCES FROM BT'S AND BO.
- NOTE: A BEARING AGREEMENT WITH RENEWAL #109 TO U-50 AND A 3° BEARING ROTATION TO LEFT ON BT'S IN REN #7

N/A

New Accessories

28" W. OAK DOUBLE BLAZED AND SCRIBED "NE DL C 38 CS BT" BEARS N 36° W, 188.9 FT.

Sketch of Monument, Accessories, and General Area



Location & Comments

Comp. Declin. 173/4° E
 Agency DCSG
 Party Chief RANDALL W. SMITH
 Notekeeper [Signature]
 Witnesses STEPHEN J. FLAUS

Address

Surveyor's Seal

REGISTERED PROFESSIONAL LAND SURVEYOR

[Signature]
EXPIRES 6-30-98

OREGON
JULY 25, 1990
RANDALL W. SMITH
2489