

GOVERNMENT CORNER RESTORATION FORM

Date: 1-21-97 By: PC

This survey consists of:

Township 29S Range 5W Sec. 23 County DOUGLAS Map: _____

State OR Date 1-8-97 No. _____

Narrative: _____

Corner Rpt. 65 64 71-4

Corner Designation

SW
COR
DLC 48

DOUGLAS COUNTY
SURVEYOR

Condition Report Only

Not Found

Renewed

Unrecorded

Surveyed In

Referenced Out

MONUMENT DETAIL

PI # 048030

Previous Renewals 1929 EPPSTEIN, 1962 BYRON

Monument(s) Found: (Condition and Source)

CORNER STONE, TOP PROTRUDES
5" ABOVE GROUND WITH
A CHISEL "T" ON TOP.
(1929 EPPSTEIN)

N/A

Accessories Found:

OBJ NOW GONE

14" NOW 24" DIA. 2 FT HIGH ROOTED D. FIR STUMP
WITH A HEALED AXE MARK FOUND, BEARS S 12 1/2° W,
35.9 FT (AGREES WITH REC.) 1929 EPPSTEIN

36" NOW 38" DIA DEAD B. OAK WITH A FULLY HEALED
DOUBLE BLAZE BEARS N 29 1/2° W, 103.8 FT
(AGREES WITH REC.) 1929 EPPSTEIN

8" NOW 11" DIA W. OAK WITH A FULLY HEALED DOUBLE
BLAZE BEARS S 1 1/2° E, 35.9 FT (REC S 1 1/2° E,
135.9 FT DIST IS IN ERROR BY 100 FT)
1962 BYRON

RENEWAL

Monument Set (Procedure and Description)

CORNER STONE IS REFERENCED AND REMOVED MEASURES 5" BY 5" BY 13" LONG WITH A "48" ON SIDE AND A "T" ON TOP. TWO OTHER BROKEN PIECES OF STONE FOUND ON TOP OF GROUND NEAR CORNER (REC 6" X 8" X 16") 1929 UPPSTEIN

A 2 3/8" DIA. BRASS CAP ON A 1 3/8" BY 32" LONG IRON PIPE IS SET AT CORNER POSITION, PROTRUDES 7" ABOVE GROUND MARKED CORNER STONE SET ALONG NORTH EDGE OF BC/IP PROTRUDES 2" ABOVE GROUND. OTHER PIECES OF STONE SET ALONG SOUTHERLY EDGE OF BC/IP.

Monument Detail

DOUGLAS COUNTY SURVEYORS
T 29 S

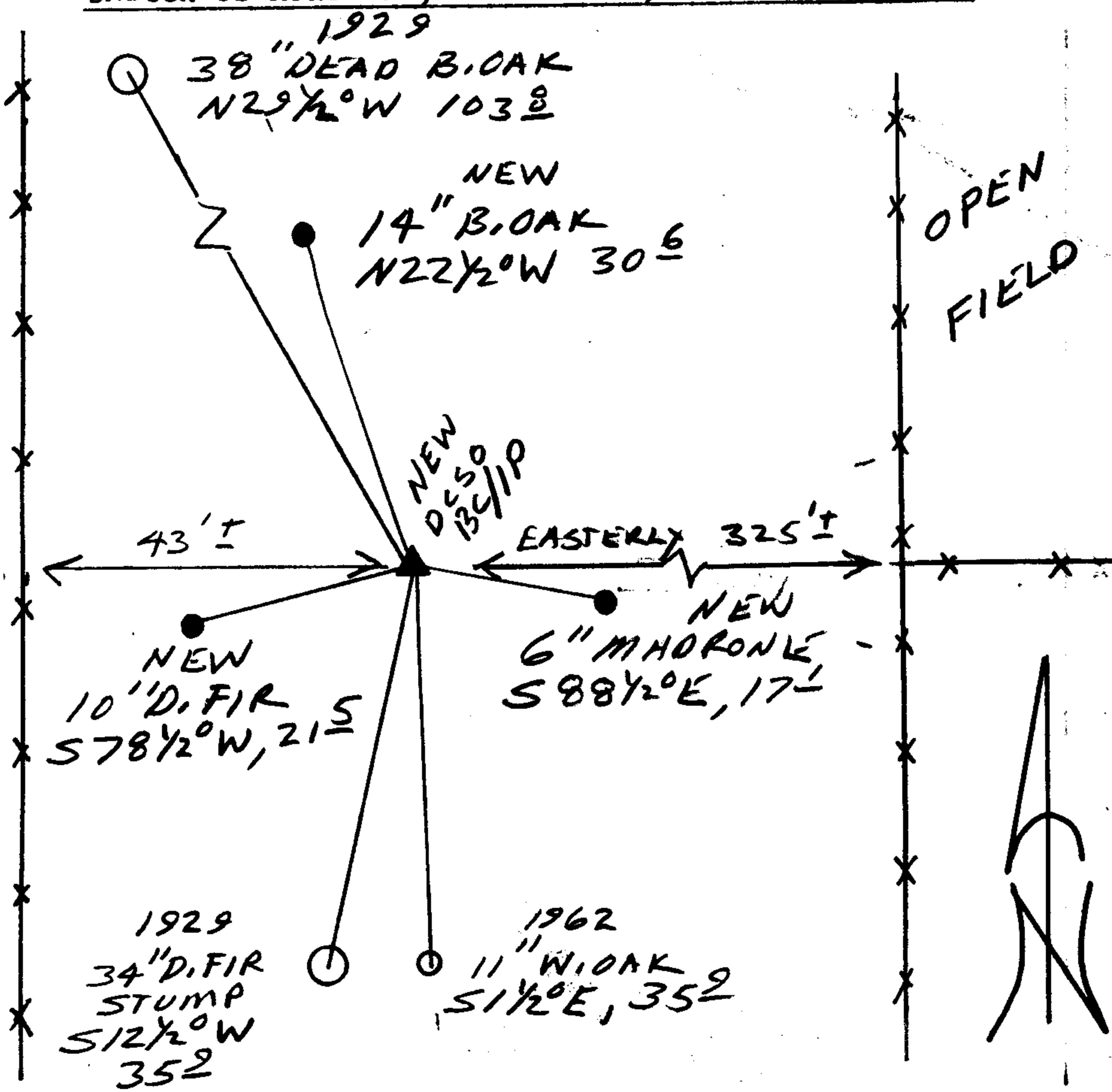
DLC R
48 5
SW COR W

1997
OFFICE

New Accessories

- 10" DIA. D. FIR DOUBLE BLAZED AND SCRIBED "SW DLC 48 CS BT" BEARS S 78 1/2° W, 21.5 FT.
- 14" DIA. B. OAK DOUBLE BLAZED AND SCRIBED "SW DLC 48 CS BT" BEARS N 22 1/2° W, 30.6 FT.
- 6" DIA. MADRONE BARK SCRIBED "SW DLC 48 CS BT" BEARS S 88 1/2° E, 17.1 FT. TO CENTER OF ROOT CROWN TREE IS PISTOL BUTT.

Sketch of Monument, Accessories, and General Area



Location & Comments

CORNER LIES 43 FT EAST OF A NORTH-SOUTH RUNNING FENCE LINE ON A EASTERLY TREE COVERED SLOPE IN A SMALL EASTERLY RUNNING DRAINAGE.

Comp. Declin. 17 3/4° E
Agency DCSO
Party Chief RANDALL W. SMITH
Notekeeper [Signature]
Witnesses STEPHEN J. FLAISE

Address

Surveyor's Seal

REGISTERED PROFESSIONAL LAND SURVEYOR

Randall W. Smith
EXPIRES 6-30-98

OREGON
JULY 25, 1990
RANDALL W. SMITH
2489