

GOVERNMENT CORNER RESTORATION FORM

Date: 1-21-97 By: PC

Township 29S Range 5N Sec. 14 County DOUGLAS Map: _____

This survey consists of:

State OR Date 1-8-97 No. _____

Narrative: _____

Corner Apt: CS 64/71-3

Corner Designation

S15/S14
S22/S23

DOUGLAS COUNTY

SURVEYOR

Condition Reported Only

Not Found

Renewed

Unrecorded

Surveyed In

Referenced Out

PI# 50090

Previous Renewals 1922 STEWART, 1951 EVANS, 1968 BYRON

MONUMENT DETAIL

Monument(s) Found: (Condition and Source)

1/4" I.D. IRON PIPE FLUSH WITH GROUND (1922 STEWART)

N/A

Accessories Found:

NO OBT'S FOUND

6" NOW 32" DIA. W. OAK WITH A FULLY HEALED BLAZE BEARS S 68 1/2° W, 58.8 FT (AGREES WITH REC.) 1922 STEWART

6" NOW 11" DIA. ASH WITH A PARTIALLY HEALED DOUBLE BLAZE NO SCRIBING VISIBLE, BEARS S 39° E, 2.9 FT (AGREES WITH REC.) 1968 BYRON

NO OTHER BT'S FD

RENEWAL

Monument Set (Procedure and Description)

Monument Detail

NONE

BC/IP NOT SET AS FENCE
LINE AND POSTS WORLD
NEED REMOVED.

N/A

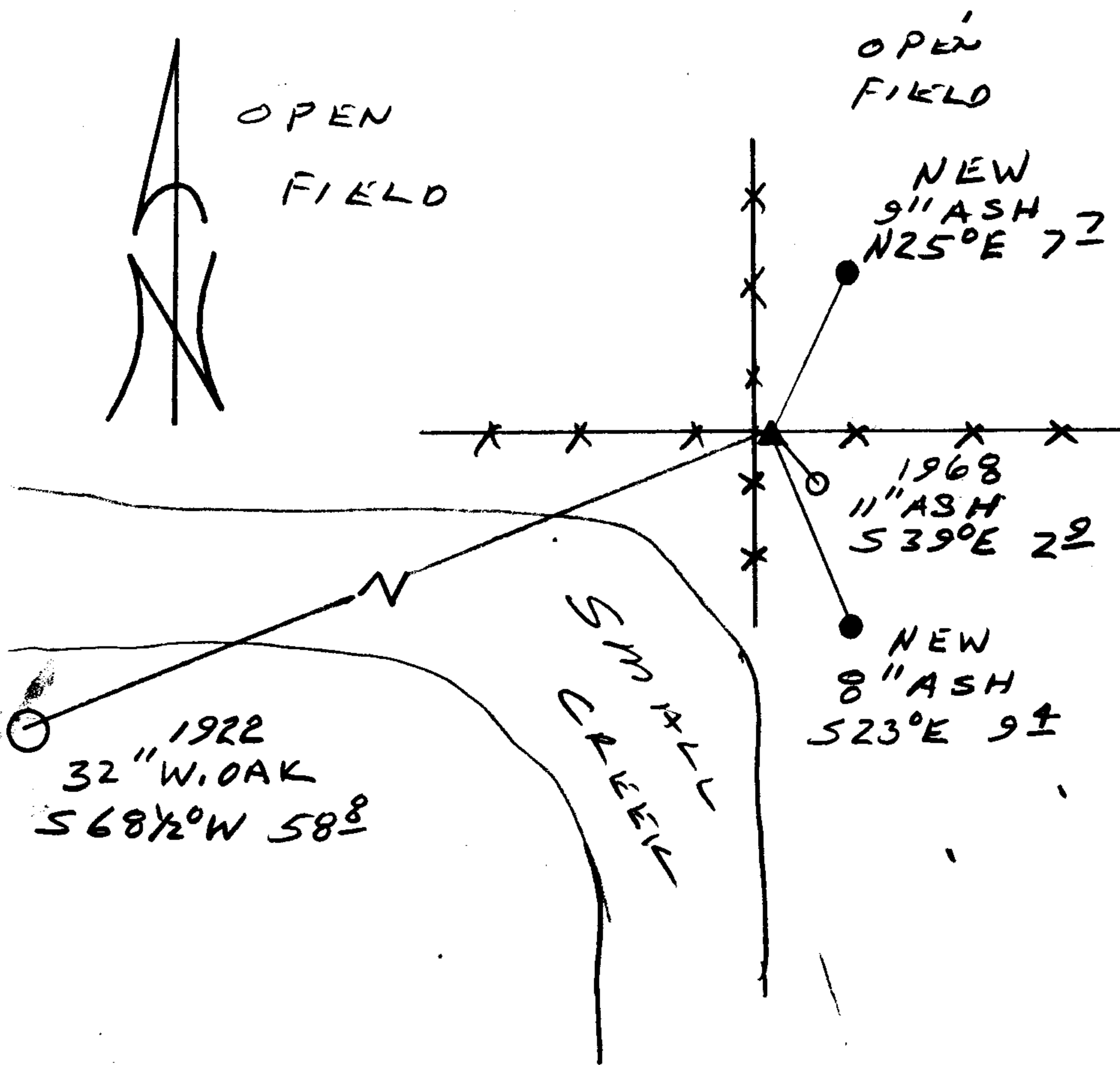
New Accessories

9" DIA ASH DOUBLE BLAZED AND SCRIBED "T29S R5W S14 CS BT"
BEARS N25°E, 7.7 FT

8" DIA ASH DOUBLE BLAZED AND SCRIBED "T29S R5W S23 CS BT"
BEAR S23°E, 9.4 FT

Sketch of Monument, Accessories, and General Area

Location & Comments



OPEN FIELD

OPEN FIELD

NEW 9" ASH N25°E 7.7

1968 11" ASH S39°E 2.9

NEW 8" ASH S23°E 9.4

1922 32" W. OAK S68 1/2°W 58.8

SMALL CREEK

Comp. Declin. 17 3/4° E

Agency DCSO

Party Chief RANDALL W. SMITH

Notekeeper Richard W. Smith

Witnesses STEPHEN J. FLAVSE

Address

REGISTRED Surveyor's Seal

PROFESSIONAL LAND SURVEYOR

Randall W. Smith

EXPIRES 6-30-98

OREGON
JULY 25, 1990
RANDALL W. SMITH
2469