

GOVERNMENT CORNER RESTORATION FORM

Date: 6/25/96 By: BC

Township 22S Range 9W Sec. 8 County DOUGLAS

This survey consists of:

State OR Date 6-17-96 No. \_\_\_\_\_

Map: \_\_\_\_\_  
Narrative: \_\_\_\_\_  
Corner Rpt: 64/69-5

Corner Designation

1/4  
S8/S9

DOUGLAS COUNTY

- Condition SURVEYOR
- Not Found
- Renewed
- Unrecorded
- Surveyed In
- Referenced Out

Previous Renewals 1977 DCSO UNRECORDED RENEWAL

Monument(s) Found: (Condition and Source) #300540

2 1/2" BRASS CAP ON A 1 1/2" O.D. IRON, PROTRUDES 7" ABOVE GROUND (1977 DCSO)

1/2" I.D. IRON PIPE 46" LONG PROTRUDES 28" ABOVE GROUND BEAR SOUTH 1 FT FROM DCSO BC/JP. SOURCE UNKNOWN

DOUGLAS COUNTY SURVEYOR

T 22 S  
R 9 W  
1/4

S 8 | S 9

1977

Accessories Found:

- 20" NOW 25" DIA 9 FT HIGH D.FIR SNAG SHOWING SCRIBE MARKS "1/4 S BT" BEARS S 68 1/2° E, 35.6 FT (AGREES WITH REC.) OBT
- 10" NOW ROOT HOLE WITH ROTTED FIR ROOTS BEARS N 44° W, 16.5 FT (AGREES WITH REC.) OBT
- 25" D.FIR WITH A FULLY HEALED DOUBLE BLAZE, BEARS S 75° W, 25.1 FT (AGREES WITH DCSO BT TAG) 1977 DCSO
- 8" D.FIR WITH A FULLY HEALED DOUBLE BLAZE, BEARS N 85° E, 5.4 FT (AGREES WITH DCSO BT TAG) 1977 DCSO

NOTE: DCSO BT TAG'S ARE DATED 10-5-77  
A CHECK OF FIELD DIARY ON 10-5-77 WAS MADE, RECORDS INDICATE THAT ROD KIMBERLING AND MIKE CLINE WERE AT CORNER.

RENEWAL

Monument Set (Procedure and Description)

NONE

Monument Detail

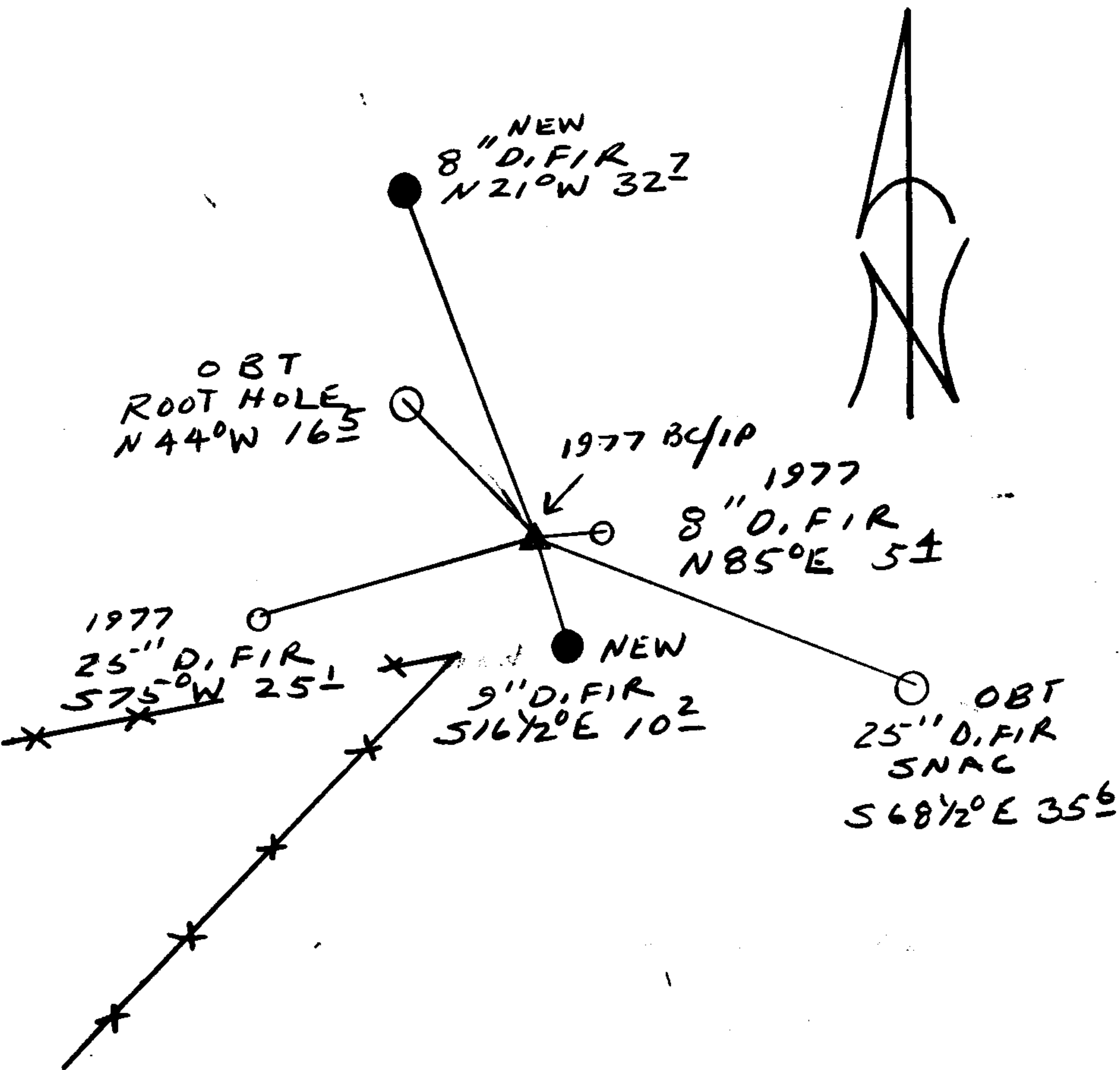
N/A

New Accessories

8" DIA. D.FIR DOUBLE BLAZED AND SCRIBED "1/4 S 8 CS BT"  
BEARS N 21° W, 32.7 FT

9" DIA. D.FIR DOUBLE BLAZED AND SCRIBED "1/4 S 9 CS BT"  
BEARS S 16 1/2° E, 10.2 FT

Sketch of Monument, Accessories, and General Area



Location & Comments

A NEW FENCE CORNER  
WITH FENCE LINES  
RUNNING S 30° W AND  
S 80° W BEARS  
S 45° W, 11.5 FT

Comp. Declin. 17 3/4° E  
Agency DCSO  
Party Chief RANDALL W SMITH  
Notekeeper Randall W Smith  
Witnesses STEPHEN T FLAISE

Address

Surveyor's Seal

REGISTERED  
PROFESSIONAL  
LAND SURVEYOR

Randall W Smith  
EXPIRES 6-30-96

OREGON  
JULY 25, 1990  
RANDALL W. SMITH  
2489