

GOVERNMENT CORNER RESTORATION FORM

FILED

Township 27S Range 6W Sec. 8 County DOUGLAS Date: 4/26/96 By: AC

State OR Date 4-17-96 No. \_\_\_\_\_ This survey consists of: \_\_\_\_\_

Corner Designation

SE  
COR  
DLC 59

Narrative: \_\_\_\_\_

Corner Rpt: 64/66-14

Condition Report Only

No. DOUGLAS COUNTY

Renewed SURVEYOR

Unrecorded

Surveyed In

Referenced Out

MONUMENT DETAIL

Previous Renewals 1876 VOL 0 Pg 6, 1893 BRIGGS

Monument(s) Found: (Condition and Source)

A STONE MEASURING 9"  
X 5" X 14" LONG WITH A  
CHISELED "+" ON TOP. STONE  
LEANS 5" N'LY OF PLUMB.  
(SOURCE UNKNOWN)

N/A

Accessories Found:

BRG + DIST'S TAKEN FROM PLUMB POSITION OF STONE  
8" NOW 12" DIA ROTTED TO GROUND OAK NO SCRIBING  
FOUND, BEARS N 73° E 15.1 FT (REC N 73° E, 14.5 FT  
DIST WOULD BE GOOD FOR A FACE MEASUREMENT).  
037

NO EVIDENCE FOUND OF 1893 BT

8" NOW DOUBLE TRUNKED BLACK OAK WE OPENED  
13" DIA SOUTHERLY TRUNK AND FOUND SCRIBING  
"C 59" CENTER OF 13" TRUNK BEARS N 45° W,  
41.6 FT (AGREES WITH REC) 1893 BRIGGS

RENEWAL

Monument Set (Procedure and Description)

Monument Detail

PLUMB POSITION OF STONE IS REFERENCED AND A 2 3/8" DIA BRASS CAP ON A 1 3/8" O.D. BY 32" LONG IRON PIPE IS SET AT REFERENCED POSITION. BC/IP PROTRUDES 8" ABOVE GROUND. STONE IS SET ALONG NORTH EDGE OF BC/IP PROTRUDES 2" ABOVE GROUND

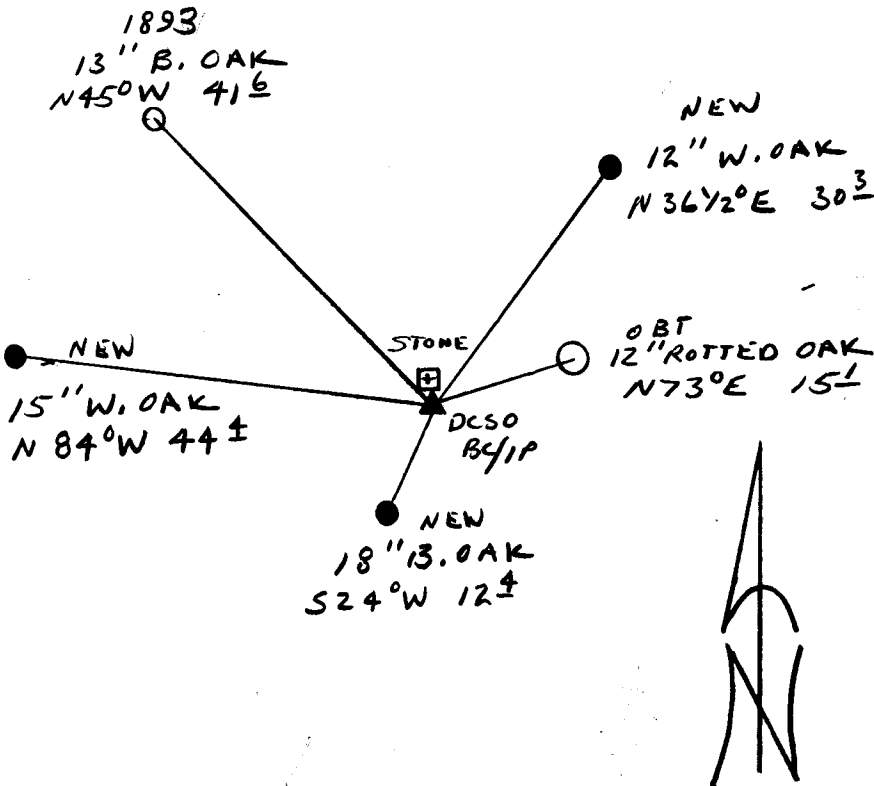
DOUGLAS COUNTY SURVEYORS  
T27S  
R6W  
SE  
DLC 59

1996  
OFFICE

New Accessories

15" DIA. W. OAK DOUBLE BLAZED AND SCRIBED "SE DLC 59 CS BT" BEARS N 84° W, 44.4 FT.  
18" DIA. B. OAK DOUBLE BLAZED AND SCRIBED "SE DLC 59 CS BT" BEARS S 24° W, 12.4 FT.  
12" DIA. W. OAK DOUBLE BLAZED AND SCRIBED "SE DLC 59 CS BT" BEARS N 36 1/2° E, 30.3 FT

Sketch of Monument, Accessories, and General Area



Location & Comments

Comp. Declin. 17 3/4° E  
Agency DCCSO  
Party Chief RANDALL W. SMITH  
Notekeeper [Signature]  
Witnesses STEPHEN J. FLAUSE

Address

REGISTERED Surveyor's Seal  
PROFESSIONAL  
LAND SURVEYOR  
Randall W. Smith  
EXPIRES 6-30-96  
OREGON  
JULY 25, 1990  
RANDALL W. SMITH  
2489