



Monument Set (Procedure and Description)

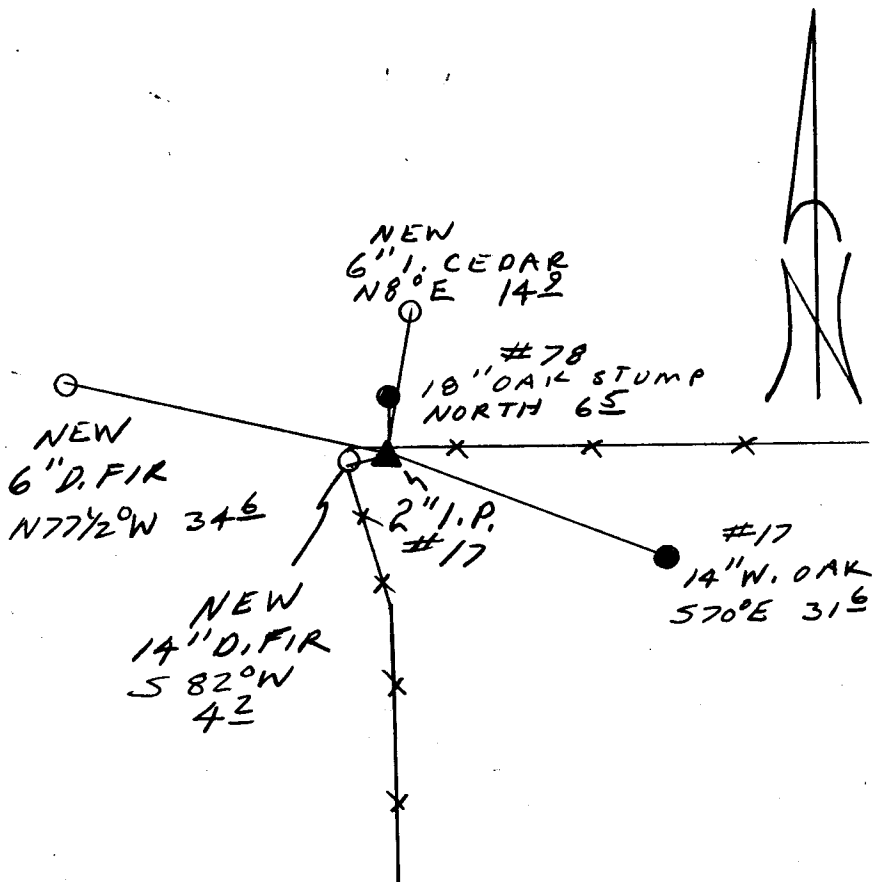
FD 2" I.P. IS FIRM IN GROUND ON A STEEP SOUTH SLOPE. NO BLIP WAS SET AS WE DID NOT WANT TO DISTURB GROUND.

N/A

New Accessories

6" DIA. J CEDAR DOUBLE BLAZED AND SCRIBED "NW DLC 41 CS BT" BEARS N 8° E, 14.9 FT
6" DIA. D. FIR DOUBLE BLAZED AND SCRIBED "NW DLC 41 CS BT" BEARS N 77 1/2° W, 34.6 FT
14" DIA. D. FIR SINGLE BLAZED AND SCRIBED "NW DLC 41 CS BT" BEARS S 82° W, 4.2 FT

Sketch of Monument, Accessories, and General Area



Location & Comments

CORNER LIES AT THE INTERSECTION OF SOUTH AND EAST RUNNING FENCE LINES.

Comp. Declin. 17 3/4° E
Agency DCSO
Party Chief RANDALL W. SMITH
Notekeeper [Signature]
Witnesses STEPHEN J. FLAUSE

Address

Surveyor's Seal

REGISTERED PROFESSIONAL LAND SURVEYOR

[Signature] EXPIRES 6-30-96

OREGON JULY 25, 1990 RANDALL W. SMITH 2489